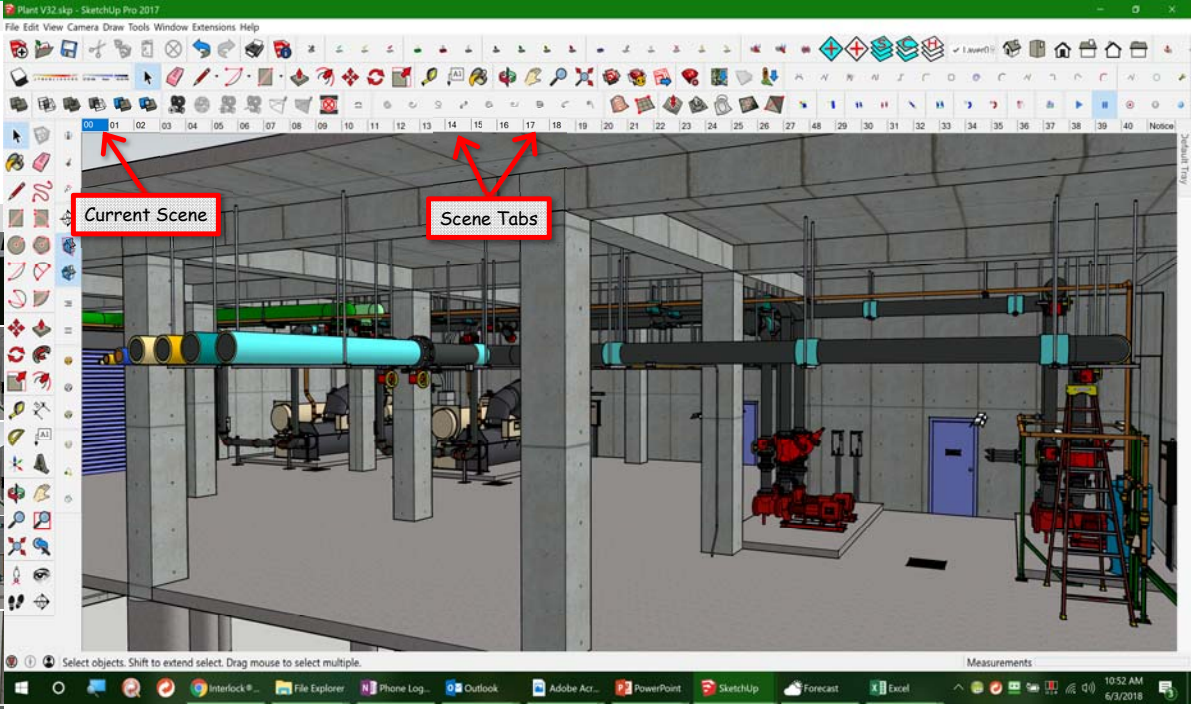


# Chiller Plant Model Scene Guide

Version 2 (June 1, 2018)

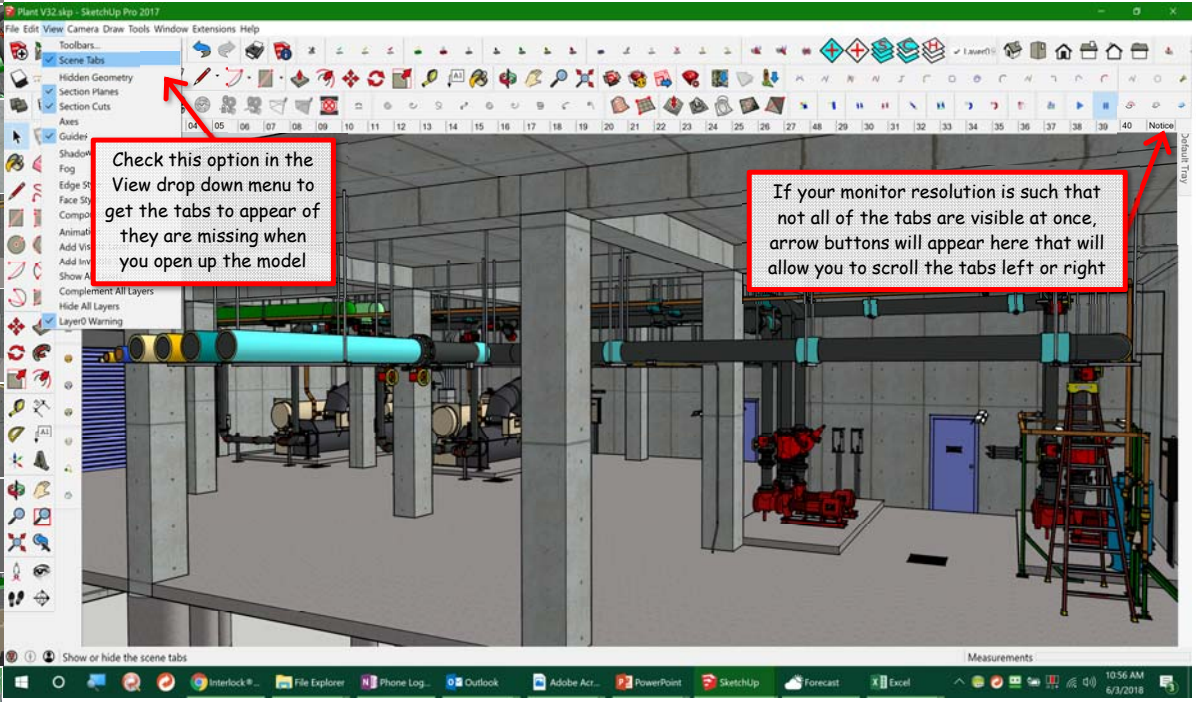
To make the scene tabs more compact in the model so more of them will display across the top of the image, I have numbered them rather than giving them descriptive labels. The list below is a kind of "cheat sheet" that will help you remember what view is associated with a given scene number. The information to the right will help you become familiar with using scenes in SketchUp if you are not already familiar.

Scene Number	Scene Description	Scene Thumbnail
Notice	Notice	
0	Plant overview	
1	Plant overview, no floor/roof above (makes it easier to get a bird's eye view of something)	
2	Standing just inside the door	
3	Standing in front of the pumps	
4	Standing behind the evaporator pumps	
5	Looking at evaporator pump trim	
6	Looking at the chillers	
7	Looking at piping near Chiller 2	
8	Looking at where condenser mains rise up through the floor	
9	Looking at Chiller 2 CHW connections	
10	Looking at Chiller 1 CHW connections	
11	Looking at Chiller 2 power connection	
12	Looking at Chiller 2 control panel	
13	Looking at Chiller 1 power connection - Part 1	
14	Looking at Chiller 1 power connection - Part 2	
15	Looking at Chiller 1 control panel	
16	Looking at Chiller 1 CW connections	
17	Looking at Chiller 2 CW connections	
18	Looking at plan table	
19	Looking at distribution pumps	
20	Looking at shot feeder and coupon rack	
21	Look at expansion tank and makeup	
22	Standing on the top of the ladder	
23	Looking at make-up, no ladder	
24	Just inside door, clip board in foreground	
25	Critical connection, highlighted to match the system diagram	
26	Field notes	
27	Differential pressure sensor and five valve manifold - Cover on	



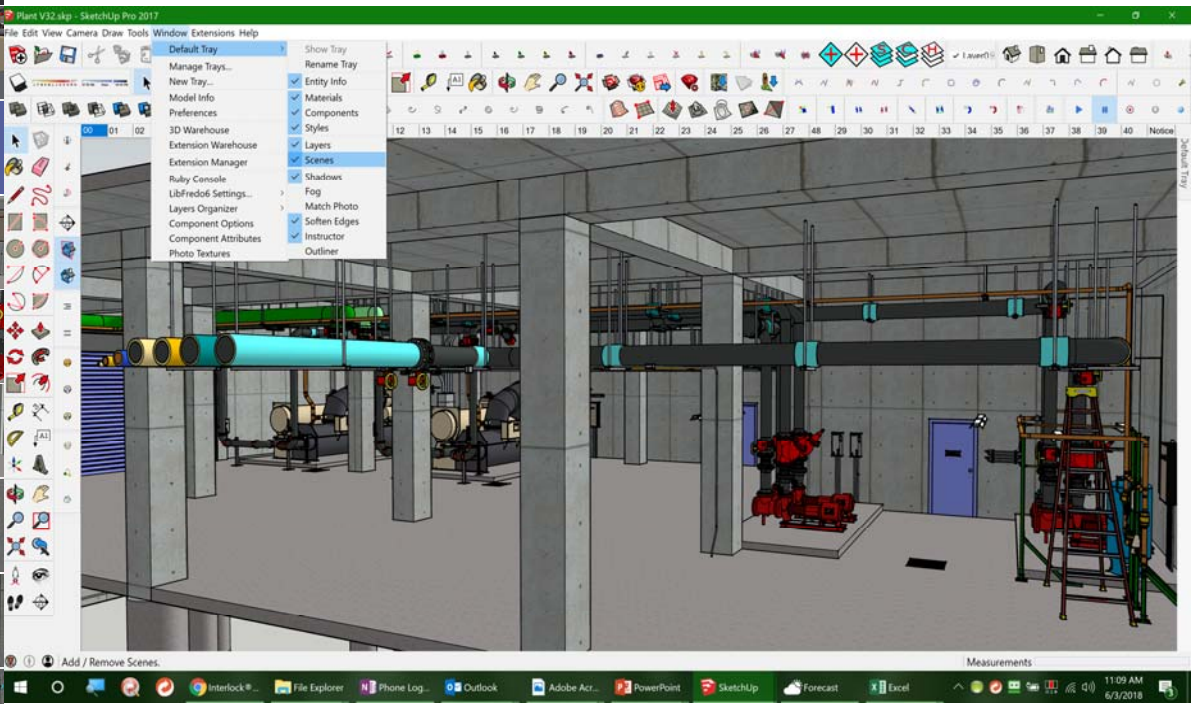
Besides using the commands like Zoom, Pan, Orbit, Position Camera, Walk, Look Around, and layer visibility to control what you are seeing, Sketchup allows you to save a view that you have navigated too as a "Scene". The Scene includes things like the position of the camera, the visibility of the various layers, the exposure of hidden geometry, etc.

To make it easier to work with the model, I have set up a number of scenes that will get you in the general vicinity of something that might be of interest in the model to save you time and effort relative to navigating to the view. The little "tabs" that you see across the top of the image in the screen shot above each contain a saved "Scene" in the model. The tab for the current scene is blue (tab 00 in the image above)



If you don't see the little tabs, you may need to turn them on. This can be done opening the "View" drop down menu and clicking next to "Scene Tabs" which will put a check mark there and cause the tabs to show up.




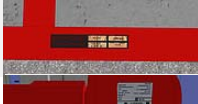











The number of tabs that will be visible will depend on the resolution of your monitor. My monitor is a very high resolution one so don't be surprised if you don't see as many tabs on your screen as are visible in the screen shots of my screen. The little black arrow keys at the upper right of the image window will allow you to scroll left or right and expose more tabs if some of them are hidden.



If you want to create your own scenes, turn layers on and off, etc., you can use the "Window" drop down menu to create "Tray's" that contain additional menus for controlling layers, creating scenes, etc. The trays can be docked or set to autohide depending on the features you select via the check marks.

For tutorials on scenes, layers and other Sketchup features, visit the [Sketchup YouTube channel](#).

## Chiller Plant Model Scene Guide

Scene Number		
28	Differential pressure sensor and five valve manifold - Cover off	
29	Chiller 1 nameplate	
30	Chiller 2 nameplate	
31	CHWP-2 nameplate	
32	CHWP-2 motor nameplate	
33	Evaporator pump starters	
34	Distribution pump variable speed drives	
35	Looking at evaporator pump TDV	
36	Looking at distribution pump TDV	
37	CHWP-4 nameplate	
38	CHWP-4 motor nameplate	
39	Engineering seal on drawings (the person behind the physics of how the plant works)	
40	Leveraging modern technology to assess savings - Part 1	
41	Leveraging modern technology to assess savings - Part 2	
42	Leveraging modern technology to assess savings - Part 3	
43	Chiller DDC Panel	