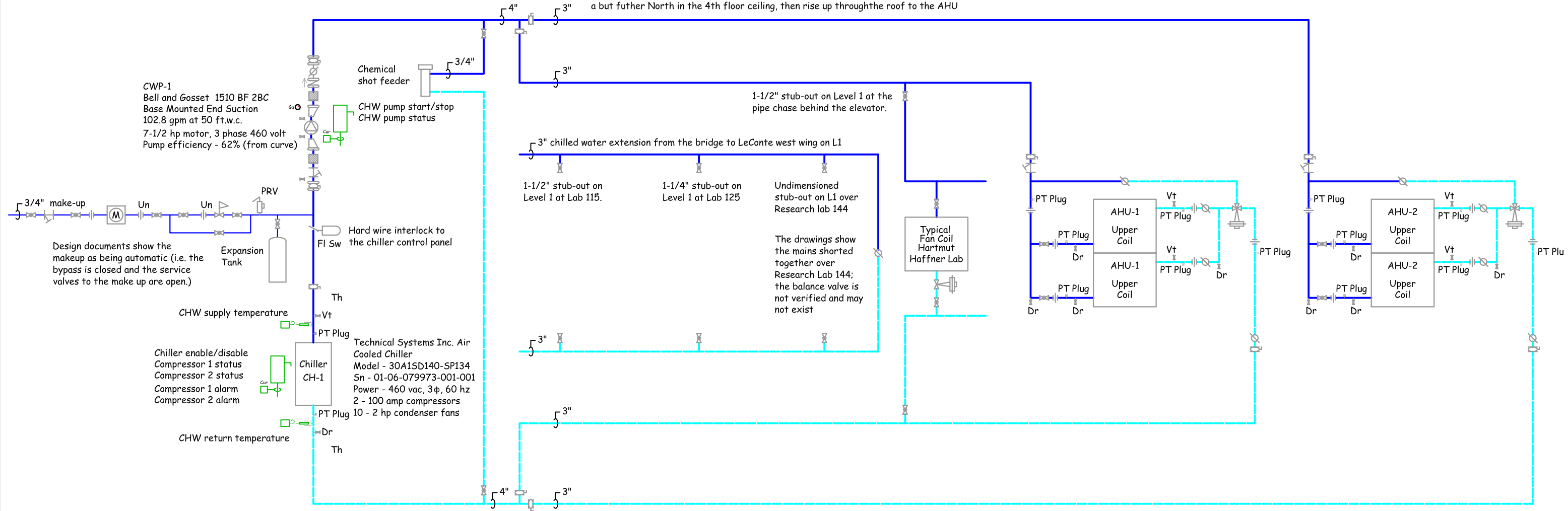


The contract documents indicate that the 3" mains to AHU2 may form an inverted trap on their route from the chiller to the AHU. The documents indicate that the lines drop through the roof, run North in the 4th floor ceiling, rise into the attic and run further North, then drop down from the attic again, run a but futher North in the 4th floor ceiling, then rise up through the roof to the AHU



As of June 29, 2009, this drawing has not been completely field verified



UC Berkeley LeConte Hall, East Wing Chilled Water System Diagram

Revisions: 1. 10-21-12 - Added AHU1 cooling coil

Drawn by: DAS

Date: 06-28-09

Checked by:

**SD-1** of 1