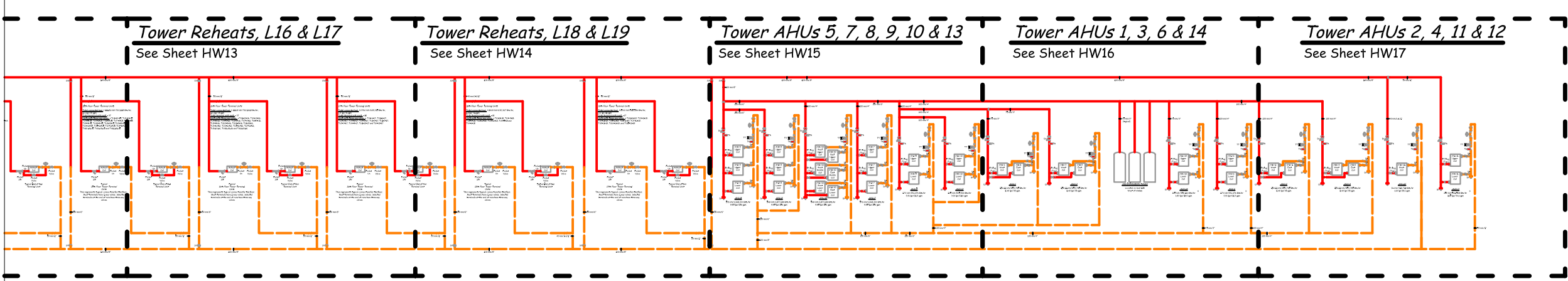
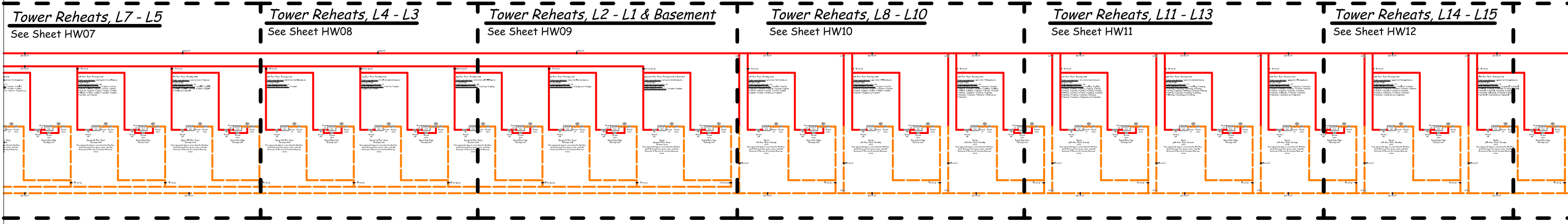
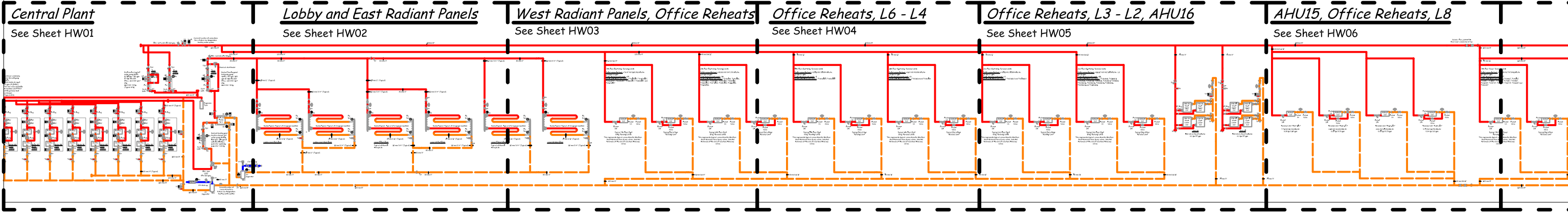


C:\Documents and Settings\David Sellers\My Documents\Workspace\00 - FDE\Seattle Federal Courthouse\System Diagrams\Heating Water System Flow Diagram.rvt.dwg, HW00, 12/13/2007 11:21:12 AM, David Sellers, Facility Dynamics Engineering, Adobe PDF



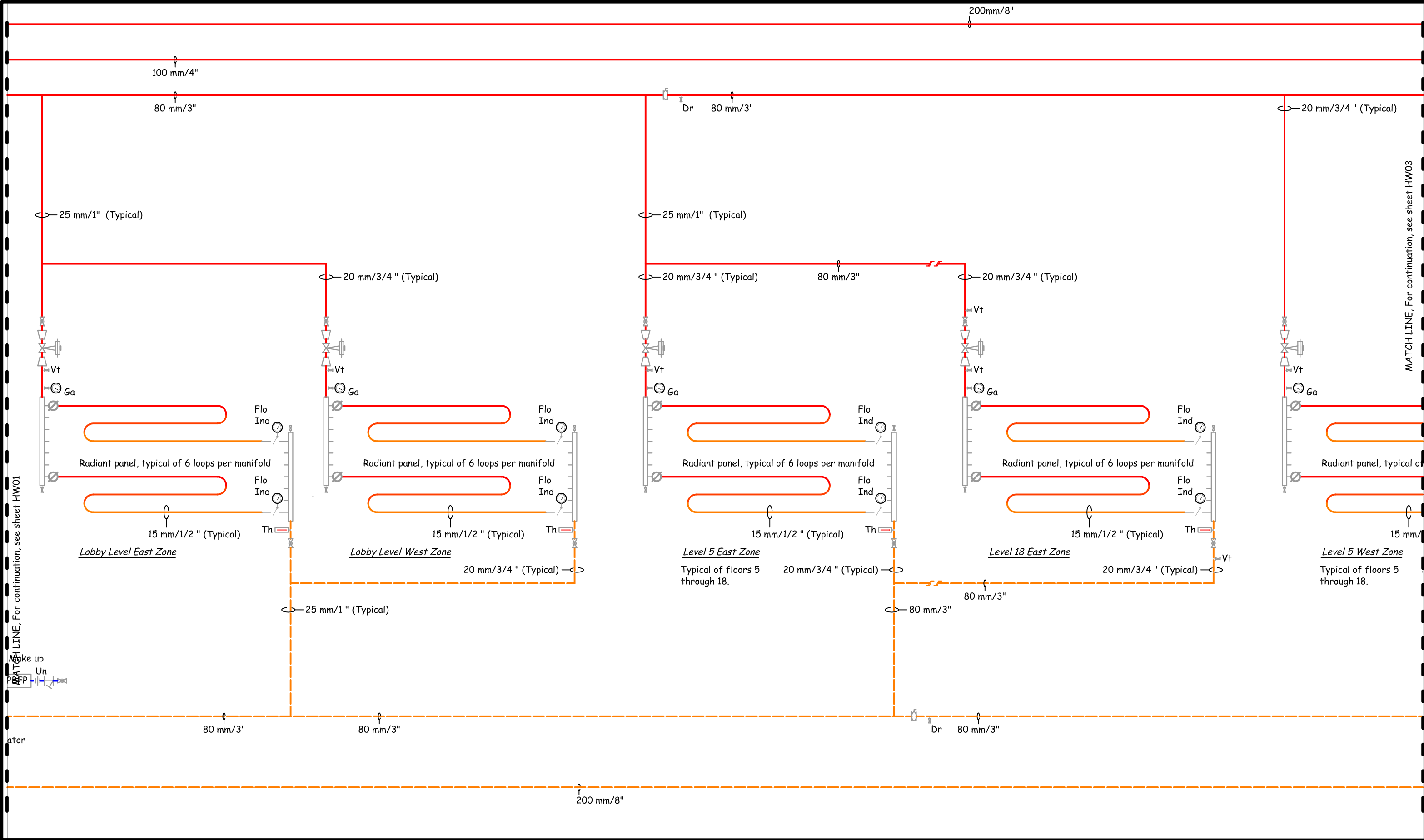
New Seattle Court House Heating Water System Flow Diagram

Revisions: 1 - Revised boiler piping to match actual factory piping.
Revisions: 2 - 1-24-02 - Modified arrangement of factory piping to make it clearer
Revisions: 3 - 12-15-03 - Updated and detailed to include radiant panel heat exchanger and HP12.
Revisions: 4 - Release 3/23/04

Revisions: 5 - Corrected return piping at boiler return headers

Drawn by: DAS	Date: April 29, 2002	HW00
Checked by:	Plot date: December 09, 2003	

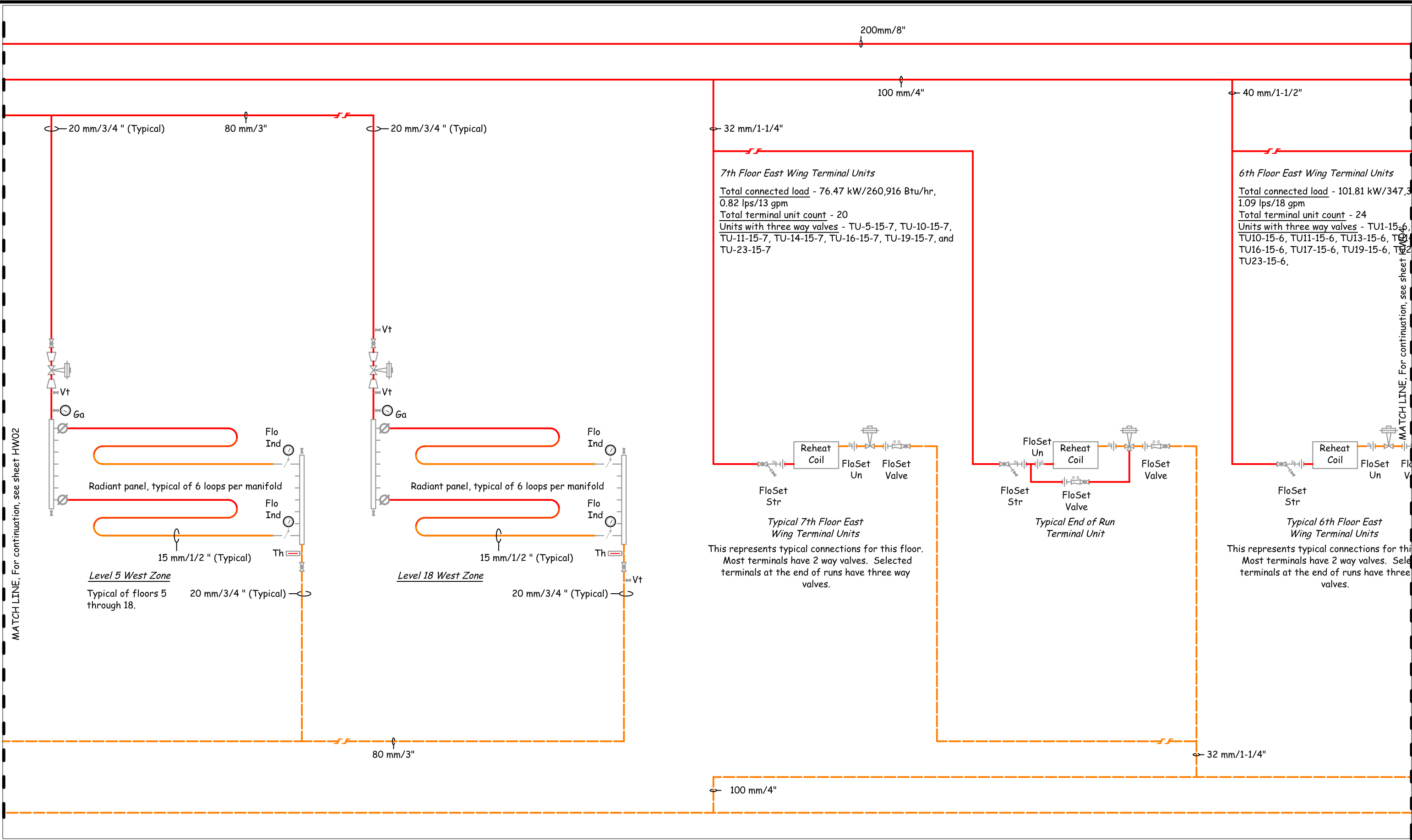
C:\Documents and Settings\David Sellers\My Documents\Workspace\00 - FDE\Seattle Federal Courthouse\System Diagrams\Heating Water System Flow Diagram.rvt.dwg, HW02, 12/13/2007 11:25:38 AM, David Sellers, Facility Dynamics Engineering, Adobe PDF



New Seattle Court House Heating Water System Flow Diagram

Revisions: Release 3/23/04	Drawn by: DAS	Date: April 29, 2002	HW02
	Checked by:	Plot date: May 1, 2002	

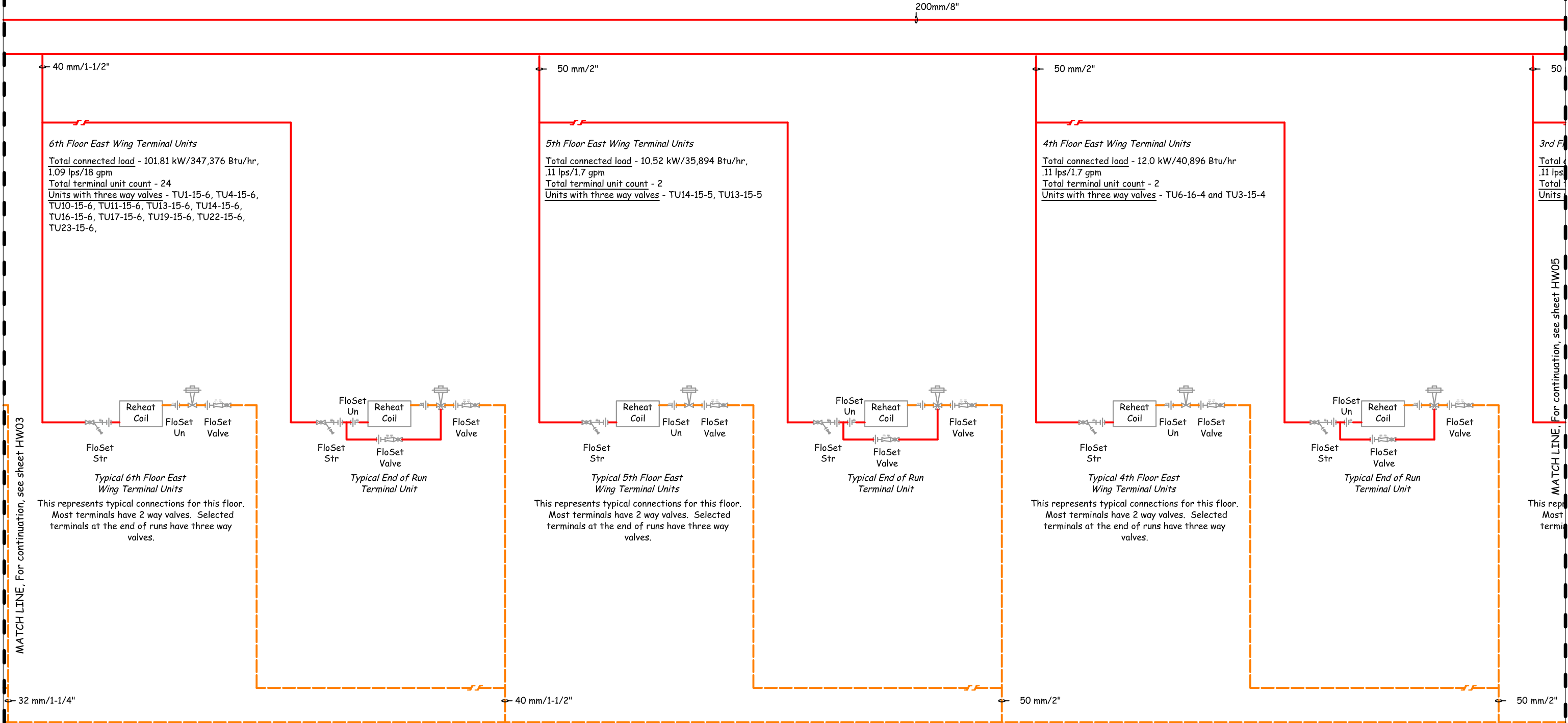
C:\Documents and Settings\David Sellers\My Documents\Workspace\00 - FDE\Seattle Federal Courthouse\System Diagrams\Heating Water System Flow Diagram r7.2.dwg, HW03, 12/13/2007 11:24:34 AM, David Sellers, Facility Dynamics Engineering, Adobe PDF



New Seattle Court House Heating Water System Flow Diagram

Revisions: Release 3/23/04	Drawn by: DAS	Date: April 29, 2002	HW03
	Checked by:	Plot date: May 1, 2002	

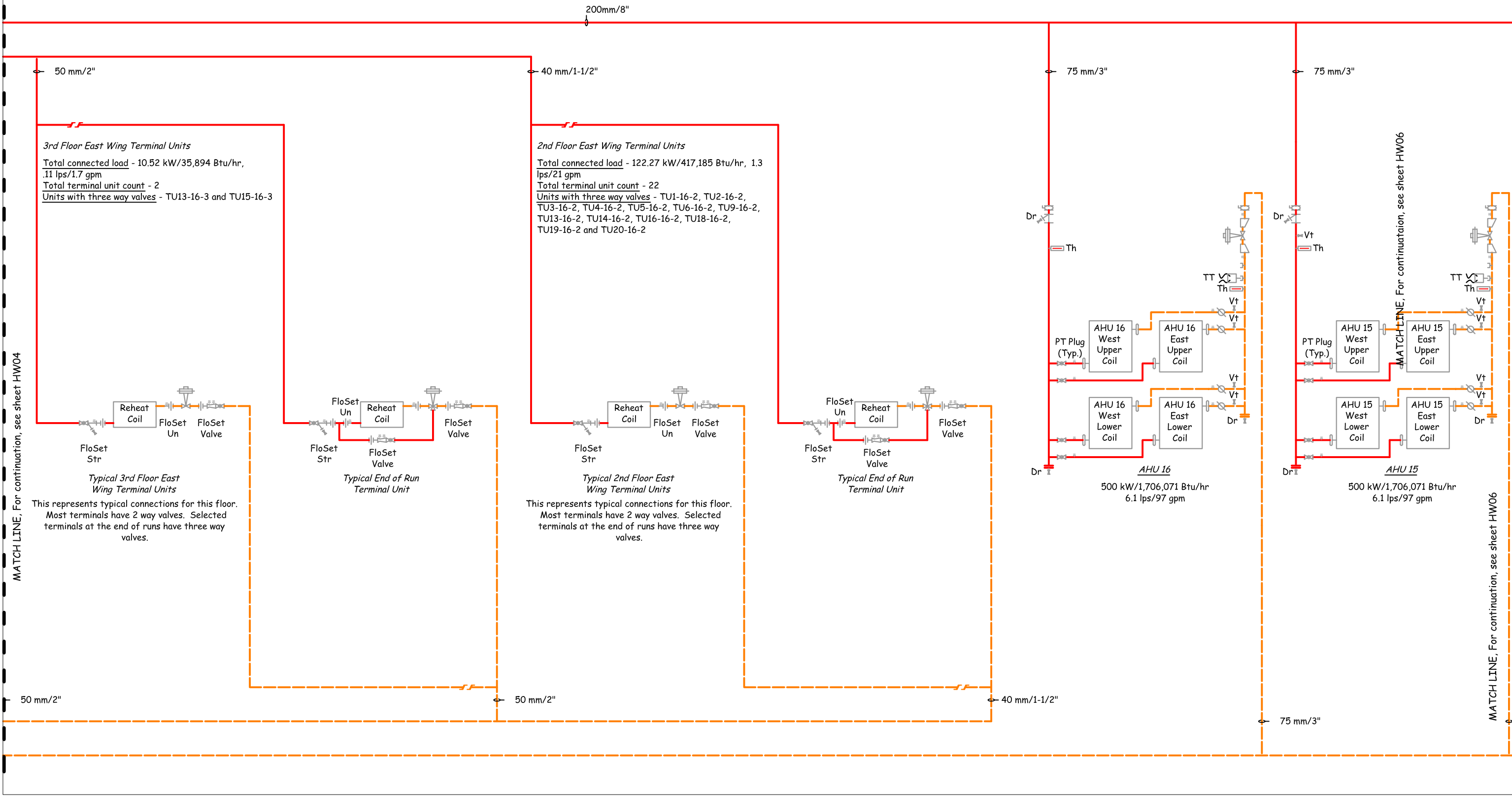
C:\Documents and Settings\David Sellers\My Documents\Workspace\00 - FDE\Seattle Federal Courthouse\System Diagrams\Heating Water System Flow Diagram r7.2.dwg, HW04, 12/13/2007 11:24:54 AM, David Sellers, Facility Dynamics Engineering, Adobe PDF



New Seattle Court House Heating Water System Flow Diagram

Revisions: Release 3/23/04	Drawn by: DAS	Date: April 29, 2002	HW04
	Checked by:	Plot date: May 1, 2002	

C:\Documents and Settings\David Sellers\My Documents\Workspace\00 - FDE\Seattle Federal Courthouse\System Diagrams\Heating Water System Flow Diagram r7.2.dwg, HW05, 12/13/2007 11:25:36 AM, David Sellers, Facility Dynamics Engineering, Adobe PDF



New Seattle Court House Heating Water System Flow Diagram

Revisions: Release 3/23/04

Drawn by: DAS

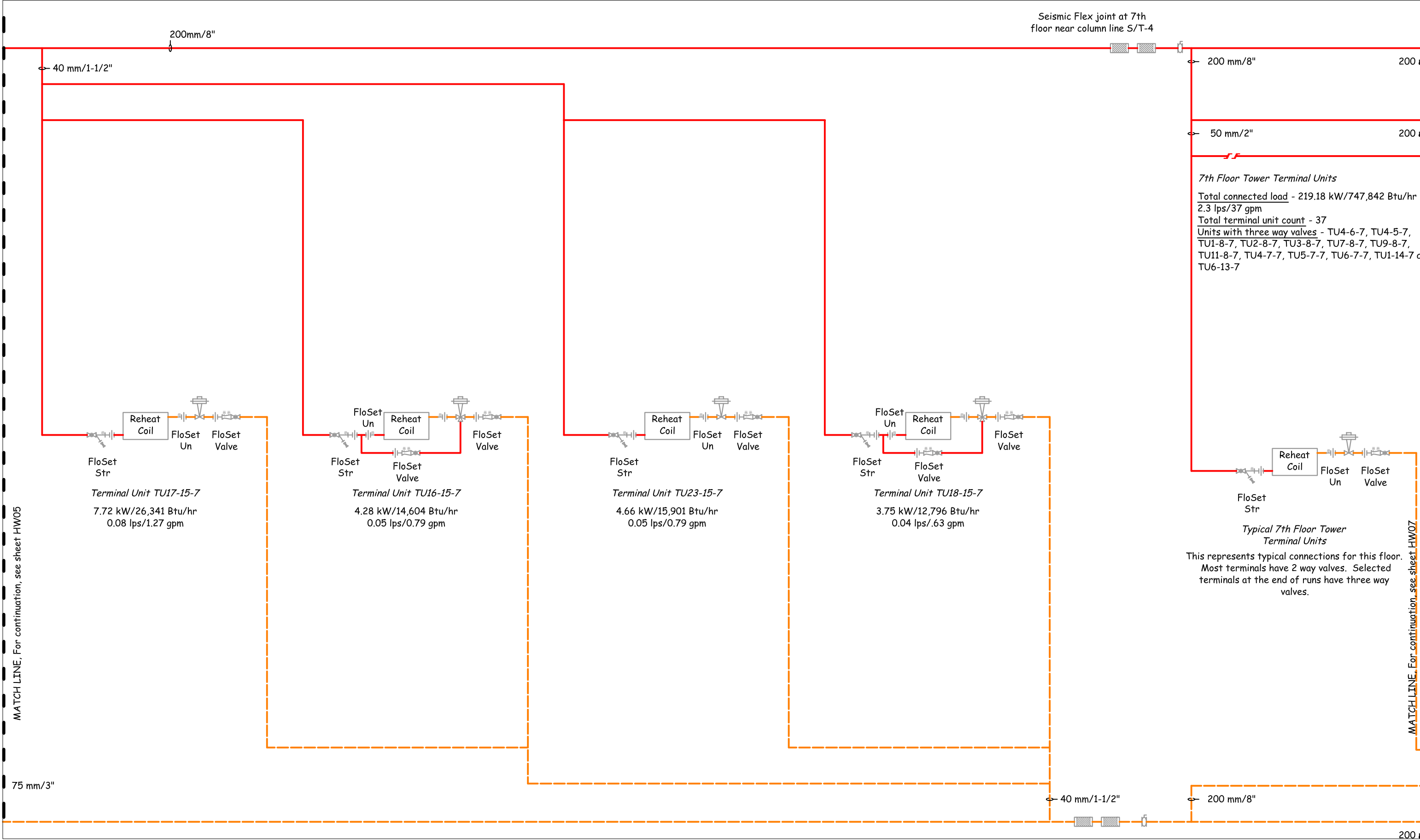
Date: April 29, 2002

HW05

Checked by:

Plot date: May 1, 2002

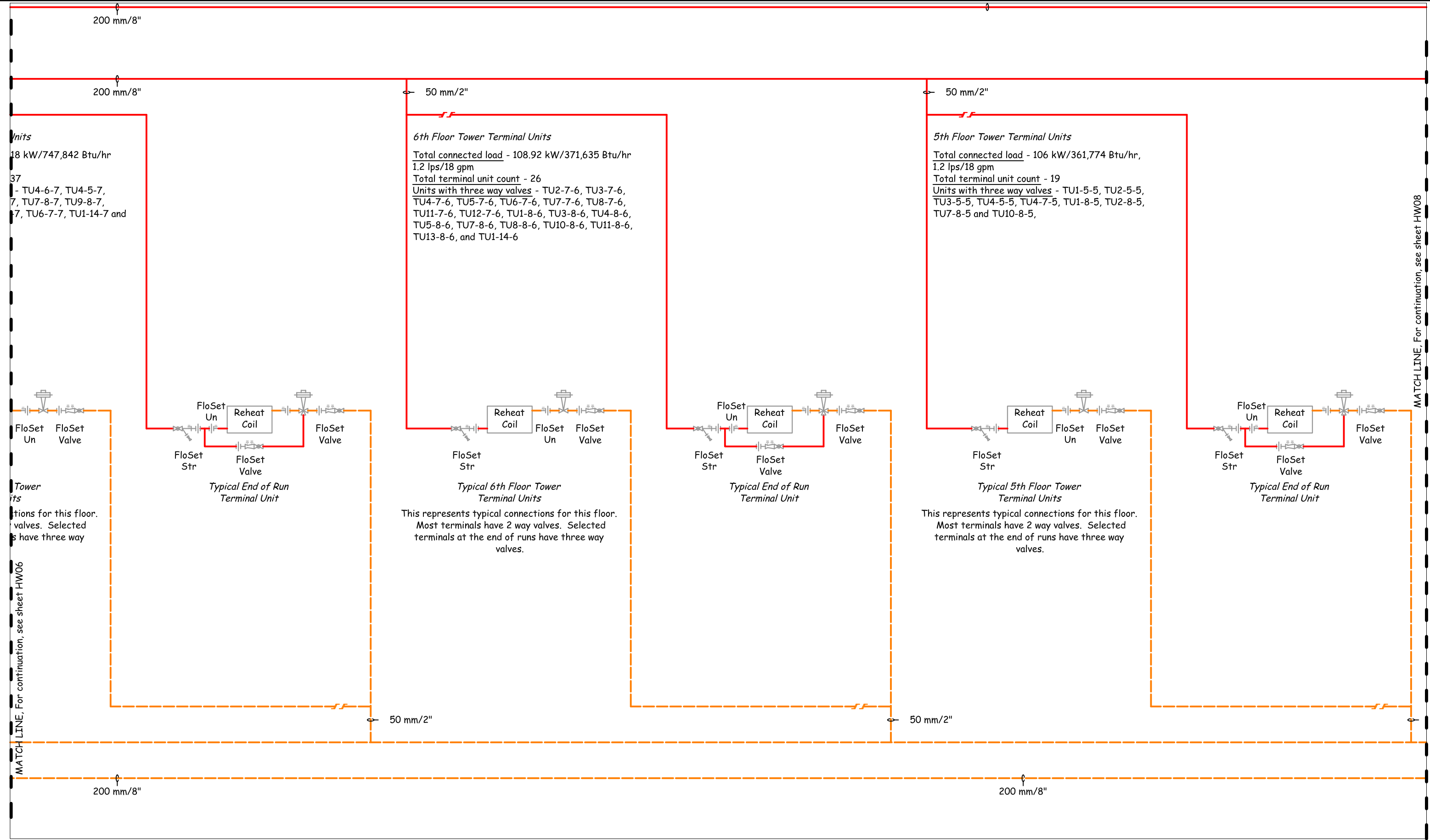
C:\Documents and Settings\David Sellers\My Documents\Workspace\00 - FDE\Seattle Federal Courthouse\System Diagrams\Heating Water System Flow Diagram r7.2.dwg, HW06, 12/13/2007 11:26:04 AM, David Sellers, Facility Dynamics Engineering, Adobe PDF



New Seattle Court House Heating Water System Flow Diagram

Revisions: Release 3/23/04	Drawn by: DAS	Date: April 29, 2002	HW06
	Checked by:	Plot date: May 1, 2002	

C:\Documents and Settings\David Sellers\My Documents\Workspace\00 - FDE\Seattle Federal Courthouse\System Diagrams\Heating Water System Flow Diagram.rvt.dwg, HW07, 12/13/2007 11:26:49 AM, David Sellers, Facility Dynamics Engineering, Adobe PDF



New Seattle Court House Heating Water System Flow Diagram

Revisions: Release 3/23/04

Drawn by: DAS

Date: April 29, 2002

HW07

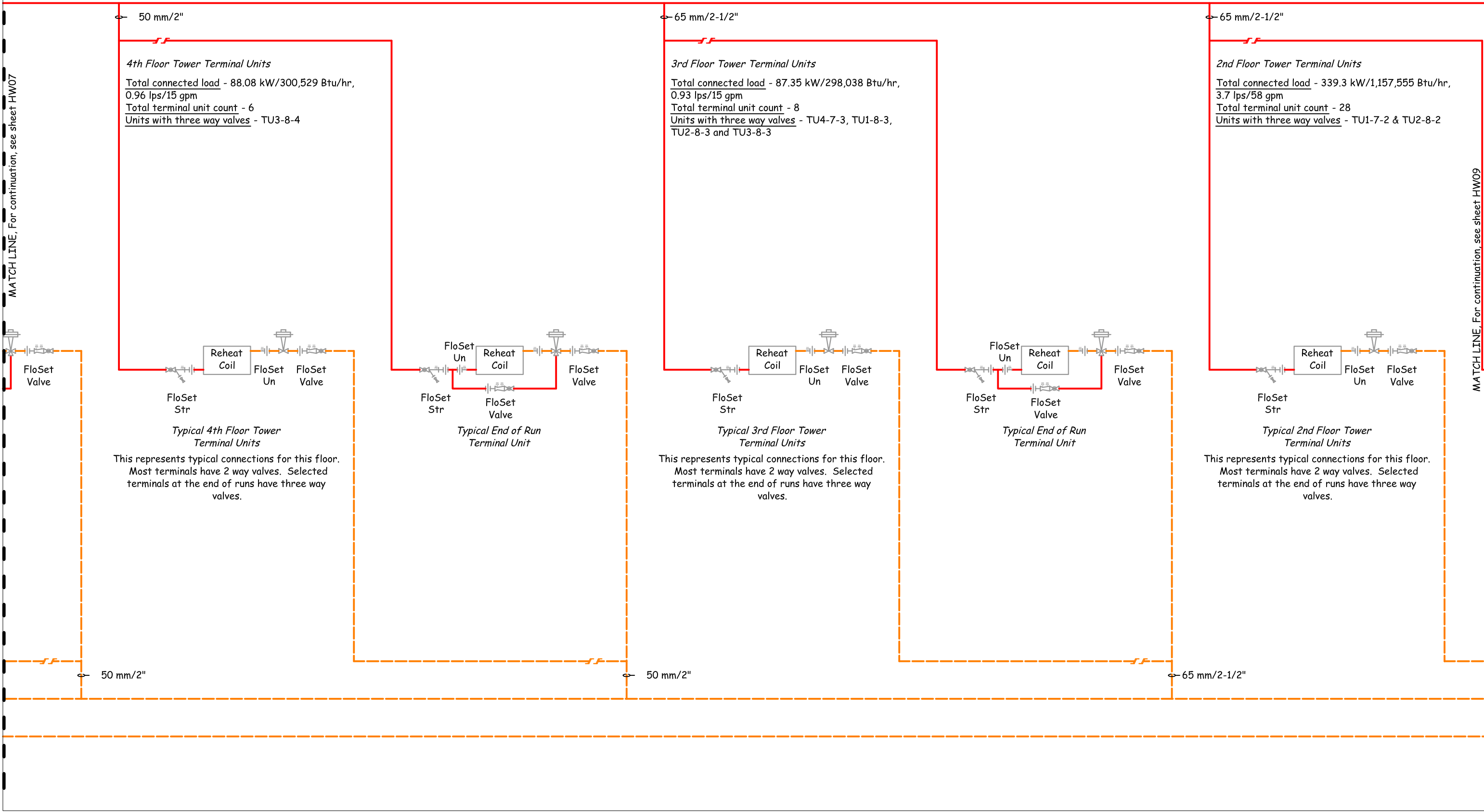
Checked by:

Plot date: May 1, 2002

C:\Documents and Settings\David Sellers\My Documents\Workspace\00 - FDE\Seattle Federal Courthouse\System Diagrams\Heating Water System Flow Diagram r7.2.dwg, HW08, 12/13/2007 11:27:33 AM, David Sellers, Facility Dynamics Engineering, Adobe PDF

MATCH LINE, For continuation, see sheet HW07

MATCH LINE, For continuation, see sheet HW09



New Seattle Court House Heating Water System Flow Diagram

Revisions: Release 3/23/04

Drawn by: DAS

Date: April 29, 2002

HW08

Checked by:

Plot date: May 1, 2002

Tower
ts
ctions for this floor.
valves. Selected
is have three way

→ 50 mm/2"

1st Floor Tower Terminal Units

Total connected load - 146.6 kW/500,336 Btu/hr,
1.6 lps/25 gpm
Total terminal unit count - 10
Units with three way valves - TU3-12-1 and TU6-12-1

40 mm/1-1/2"

Basement Floor Tower Terminal Units & Convectors

Total connected load - 117.2 kW/399,881 Btu/hr,
1.3 lps/20 gpm
Total terminal unit count - 10
Total convector count - 1
Units with three way valves - TU7-8-B, TU8-8-B

Typical End of Run Terminal Unit

Typical 1st Floor Tower
Terminal Units

This represents typical connections for this floor.
Most terminals have 2 way valves. Selected
terminals at the end of runs have three way
valves.

Typical End of Run Terminal Unit

*Typical
Basement Floor Tower
Terminal Units*

This represents typical connections for this floor.
Most terminals have 2 way valves. Selected
terminals at the end of runs have three way
valves.

Typical End of Run Terminal Unit

65 mm/2-1/2"

50 mm/2"

40 mm/1-1/2"

New Seattle Court House Heating Water System Flow Diagram

Revisions: Release 3/23/04

Drawn by: DAS

Checked by:

Date: April 29, 2002

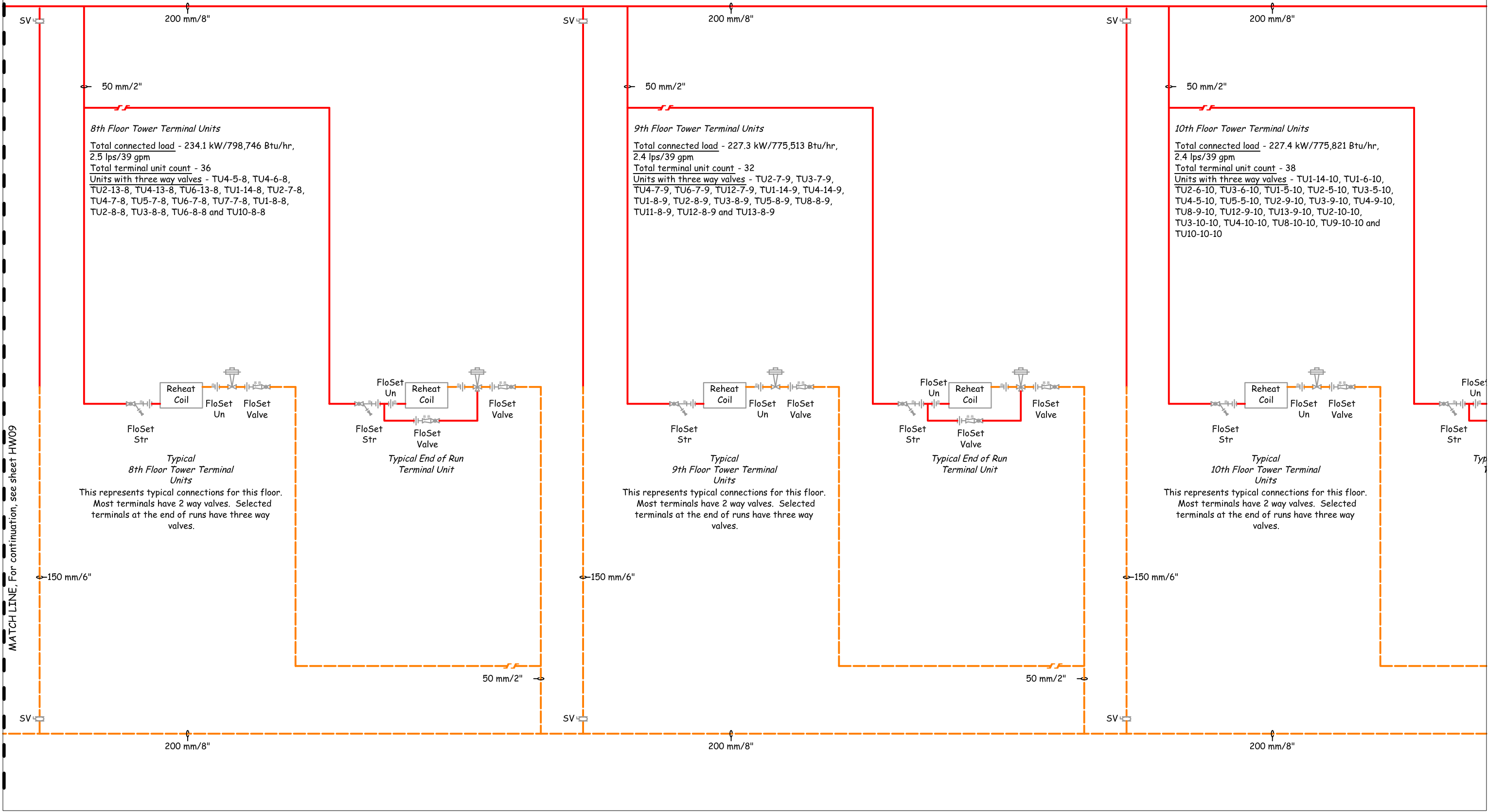
Plot date: May 1, 2002

HW09

MATCH LINE, For continuation, see sheet HWO10

C:\Documents and Settings\David Sellers\My Documents\Workspace\00 - FDE\Seattle Federal Courthouse\System Diagrams\Heating Water System Flow Diagram.rvt, dwg, HW10, 12/13/2007 11:28:35 AM, David Sellers, Facility Dynamics Engineering, Adobe PDF

MATCH LINE, For continuation, see sheet HW09

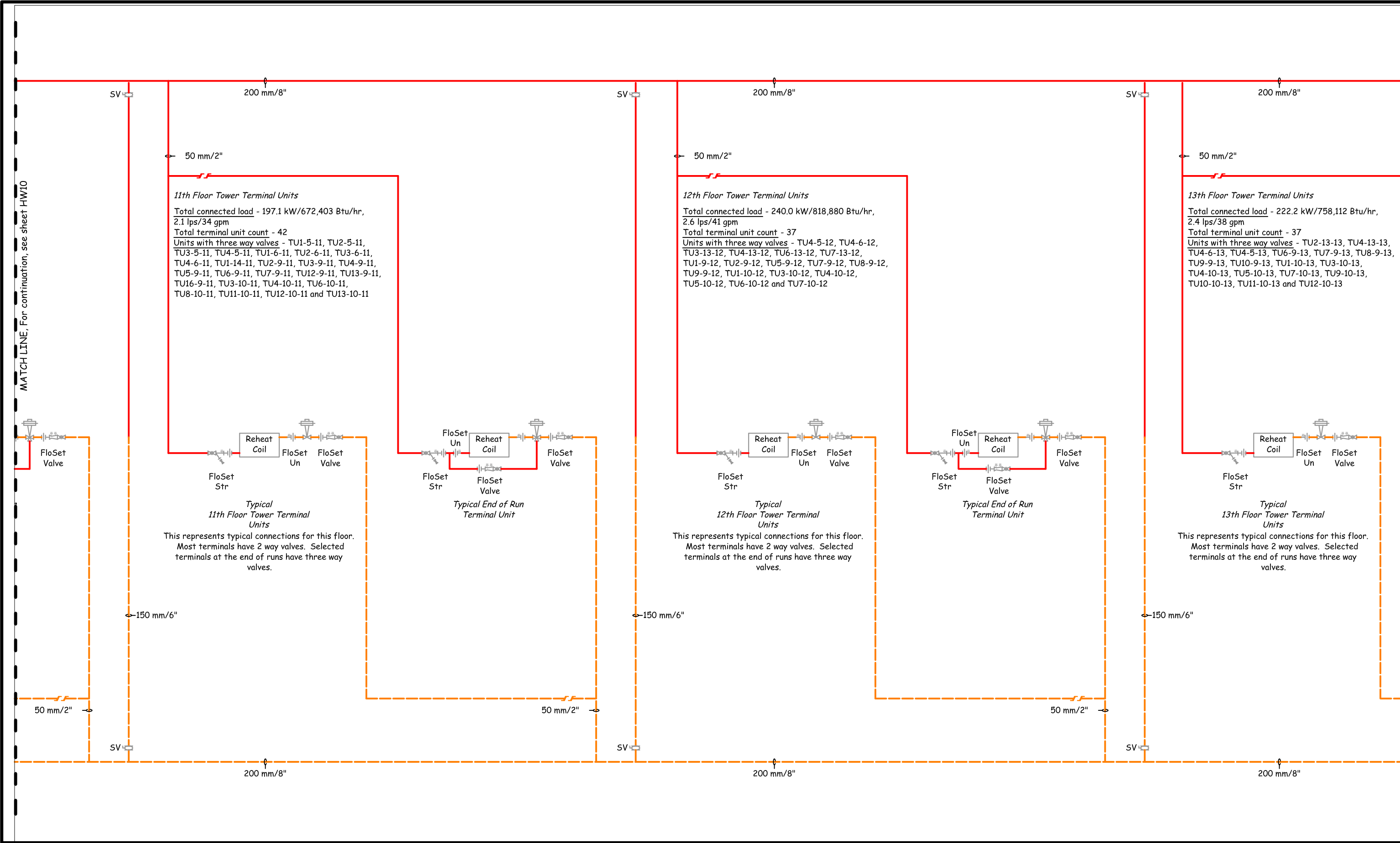


MATCH LINE, For continuation, see sheet HW011

New Seattle Court House Heating Water System Flow Diagram

Revisions: Release 3/23/04	Drawn by: DAS	Date: April 29, 2002	HW10
	Checked by:	Plot date: May 1, 2002	

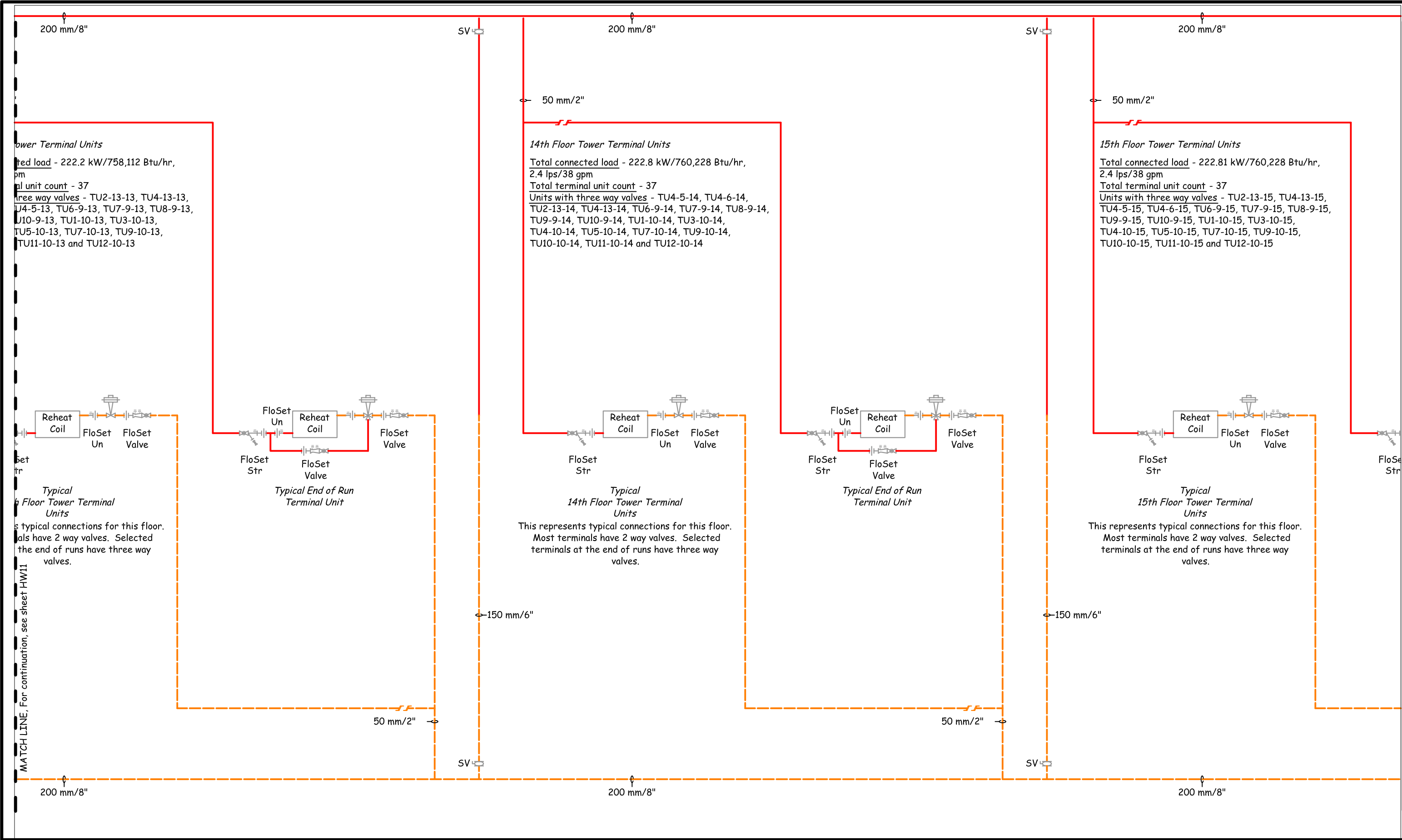
C:\Documents and Settings\David Sellers\My Documents\Workspace\00 - FDE\Seattle Federal Courthouse\System Diagrams\Heating Water System Flow Diagram r7.2.dwg, HW11, 12/13/2007 11:29:00 AM, David Sellers, Facility Dynamics Engineering, Adobe PDF



New Seattle Court House Heating Water System Flow Diagram

Revisions: Release 3/23/04	Drawn by: DAS	Date: April 29, 2002	HW11
	Checked by:	Plot date: May 1, 2002	

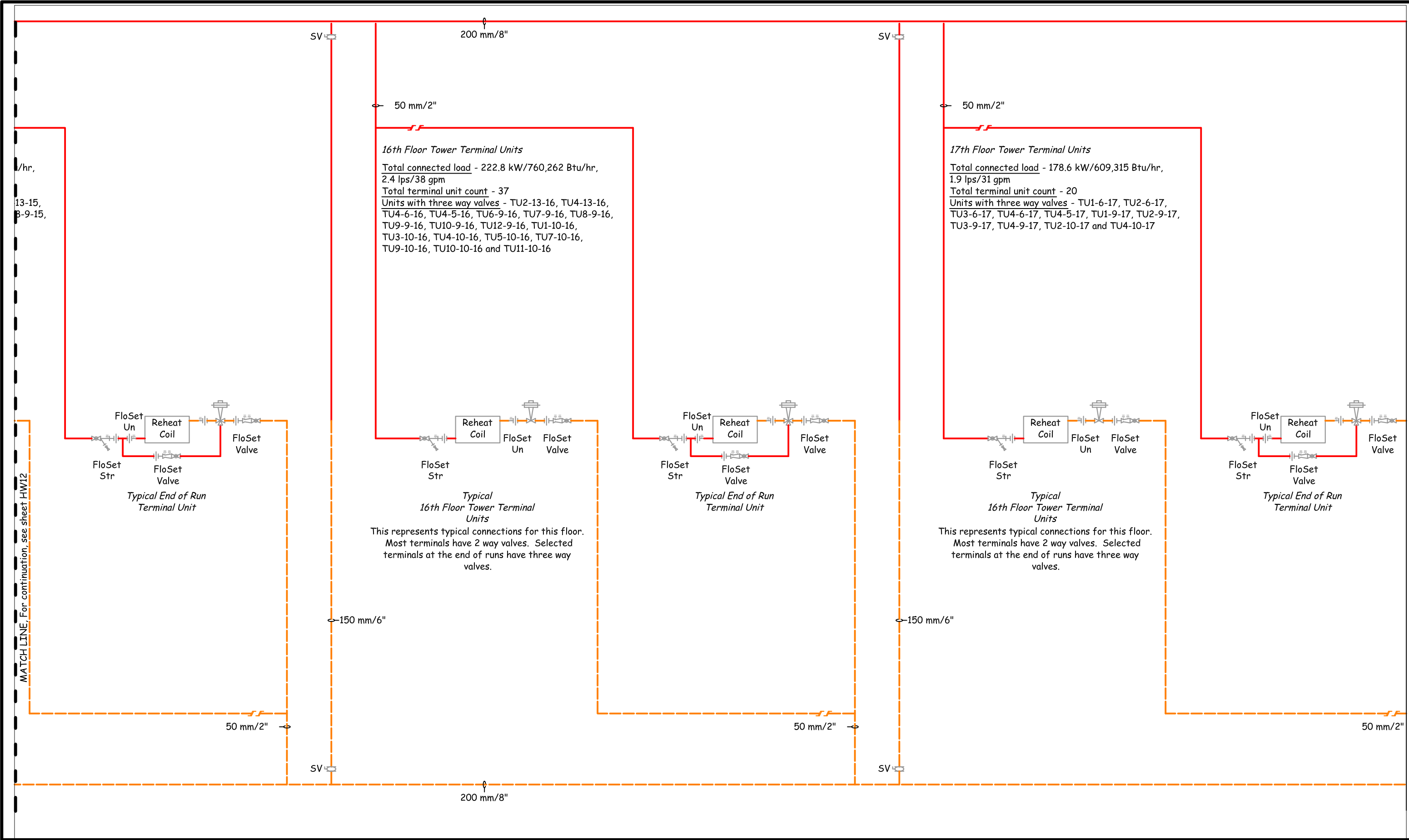
C:\Documents and Settings\David Sellers\My Documents\Workspace\00 - FDE\Seattle Federal Courthouse\System Diagrams\Heating Water System Flow Diagram.rvt, dwg, HW12, 12/13/2007 11:30:03 AM, David Sellers, Facility Dynamics Engineering, Adobe PDF



New Seattle Court House Heating Water System Flow Diagram

Revisions: Release 3/23/04	Drawn by: DAS	Date: April 29, 2002	HW12
	Checked by:	Plot date: May 1, 2002	

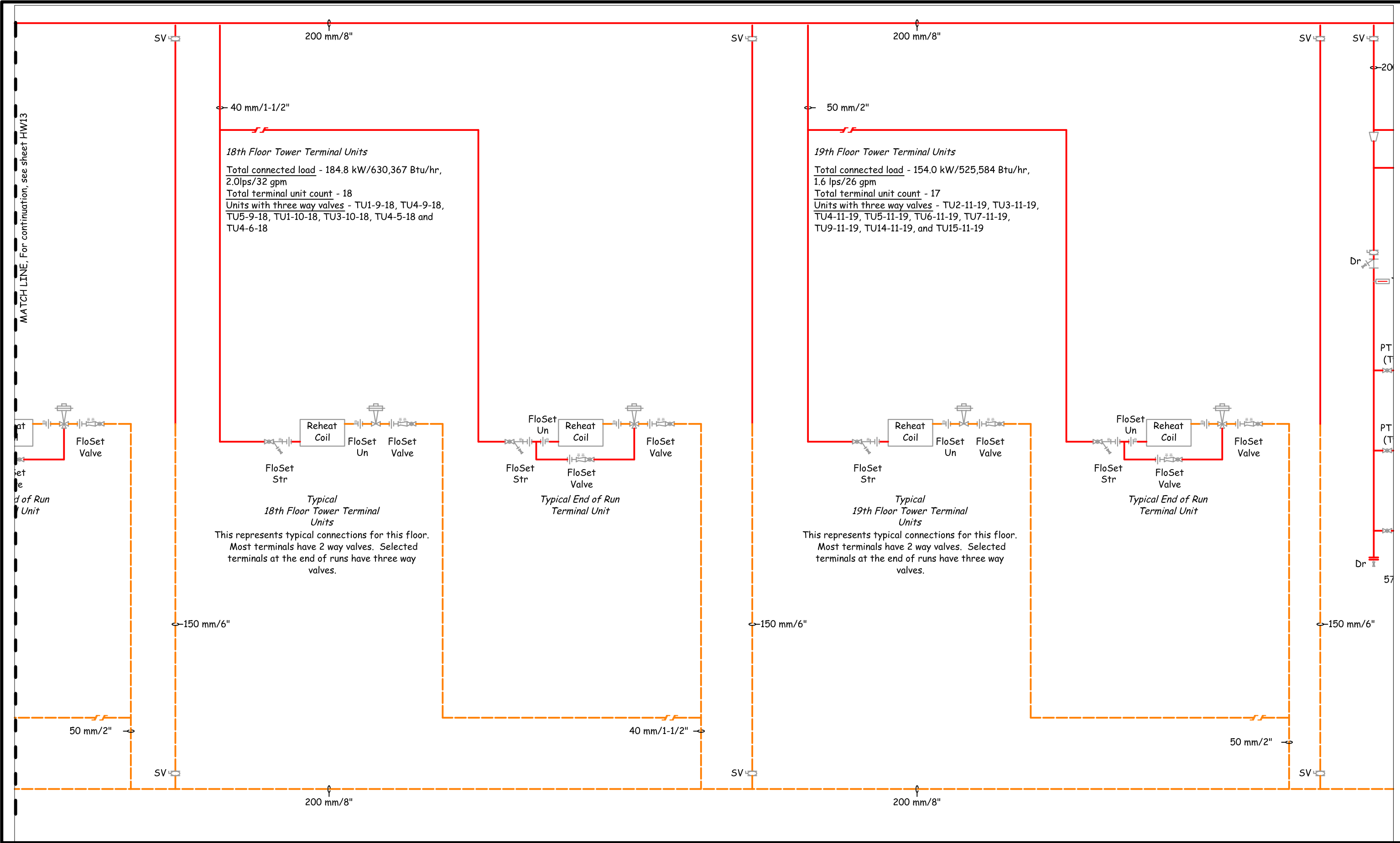
C:\Documents and Settings\David Sellers\My Documents\Workspace\00 - FDE\Seattle Federal Courthouse\System Diagrams\Heating Water System Flow Diagram.rvt, dwg, HW13, 12/13/2007 11:30:35 AM, David Sellers, Facility Dynamics Engineering, Adobe PDF



New Seattle Court House Heating Water System Flow Diagram

Revisions: Release 3/23/04	Drawn by: DAS	Date: April 29, 2002	HW13
	Checked by:	Plot date: May 1, 2002	

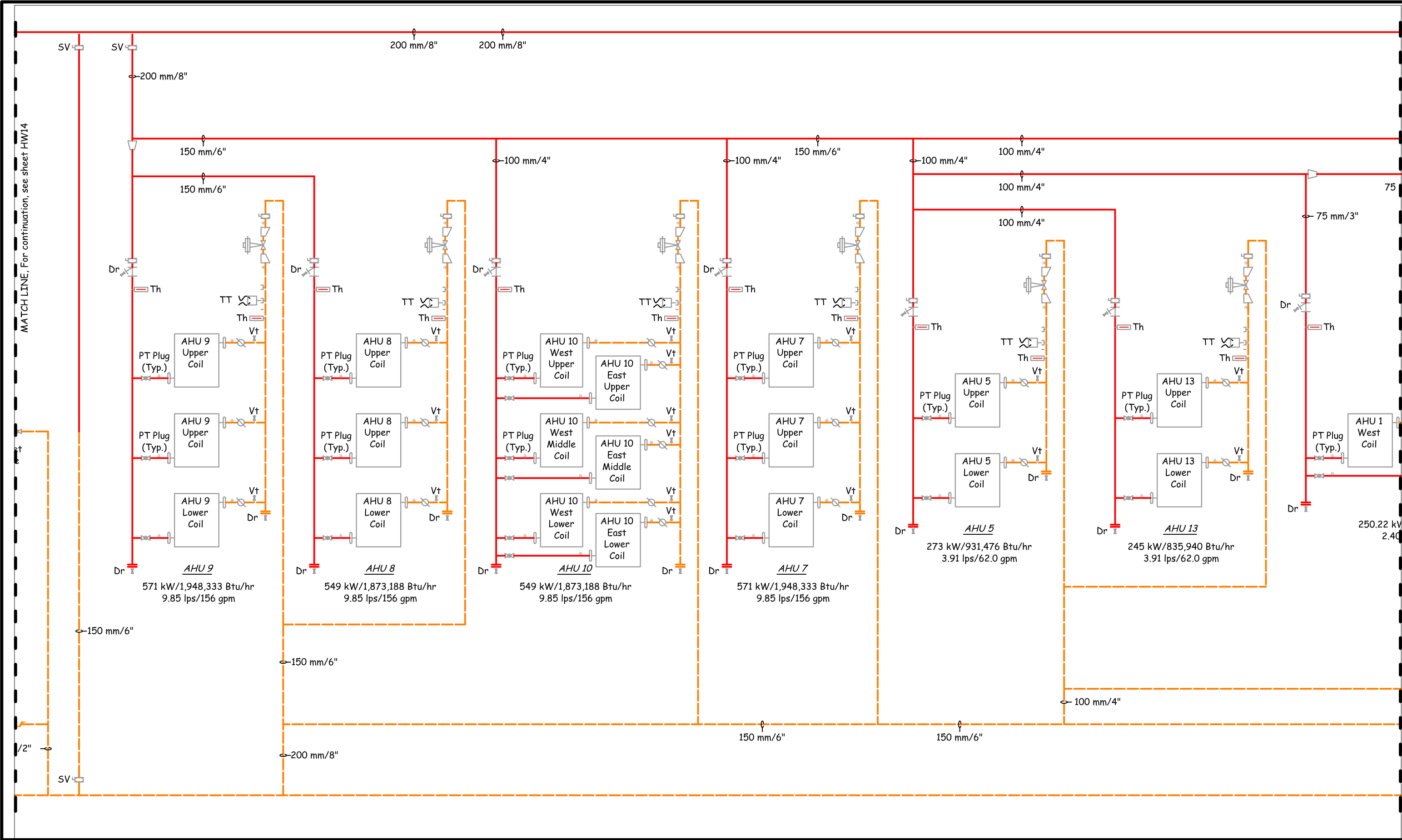
C:\Documents and Settings\David Sellers\My Documents\Workspace\00 - FDE\Seattle Federal Courthouse\System Diagrams\Heating Water System Flow Diagram r7.2.dwg, HW14, 12/13/2007 11:31:04 AM, David Sellers, Facility Dynamics Engineering, Adobe PDF



New Seattle Court House Heating Water System Flow Diagram

Revisions: Release 3/23/04	Drawn by: DAS	Date: April 29, 2002	HW14
	Checked by:	Plot date: May 1, 2002	

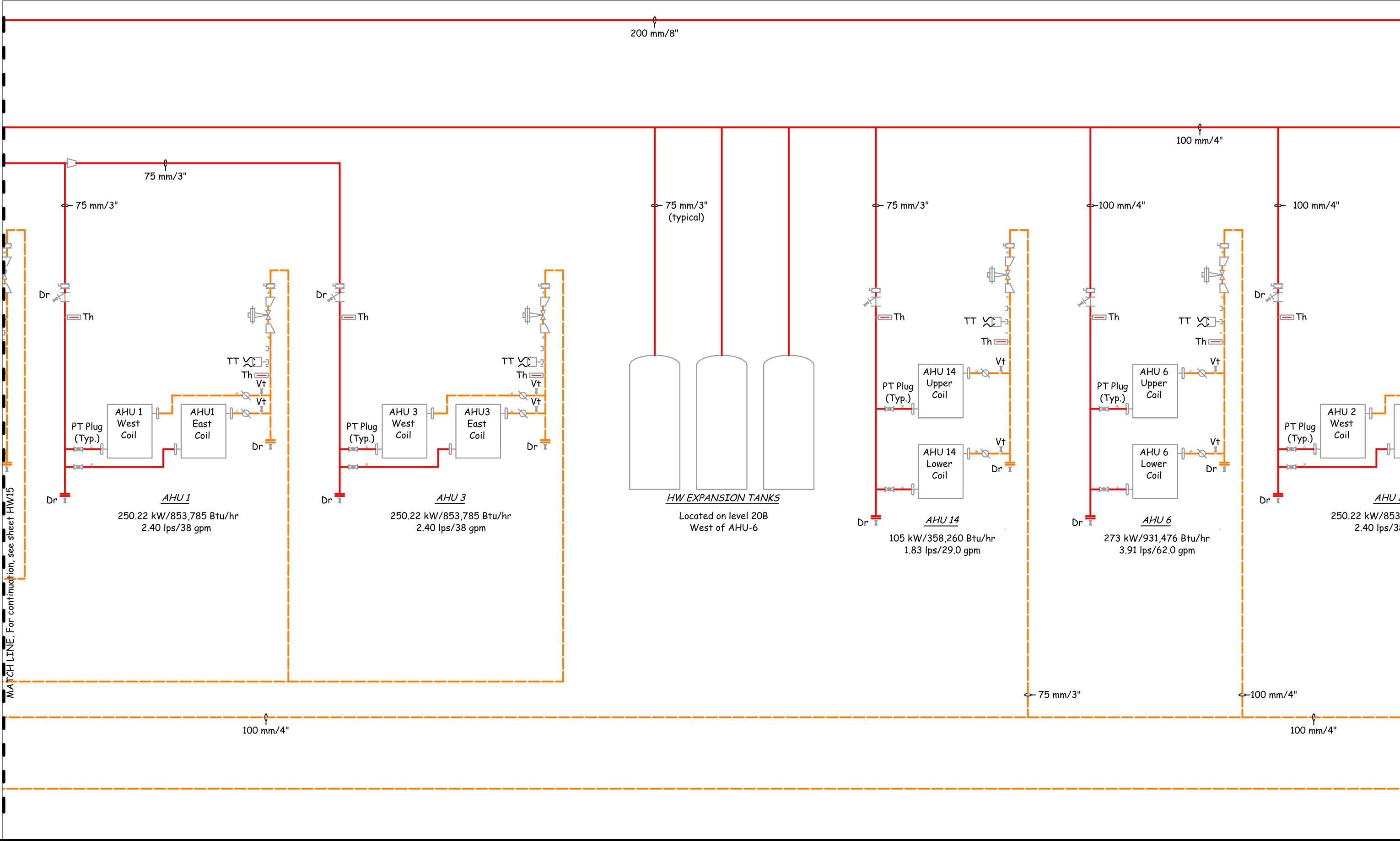
C:\Documents and Settings\David Sellers\My Documents\Workspace\00 - FDE\Seattle Federal Courthouse\System Diagrams\Heating Water System Flow Diagram r7.2.dwg, HW15, 12/13/2007 11:31:27 AM, David Sellers, Facility Dynamics Engineering, Adobe PDF



New Seattle Court House Heating Water System Flow Diagram

Revisions: Release 3/23/04	Drawn by: DAS	Date: April 29, 2002	HW15
	Checked by:	Plot date: May 1, 2002	

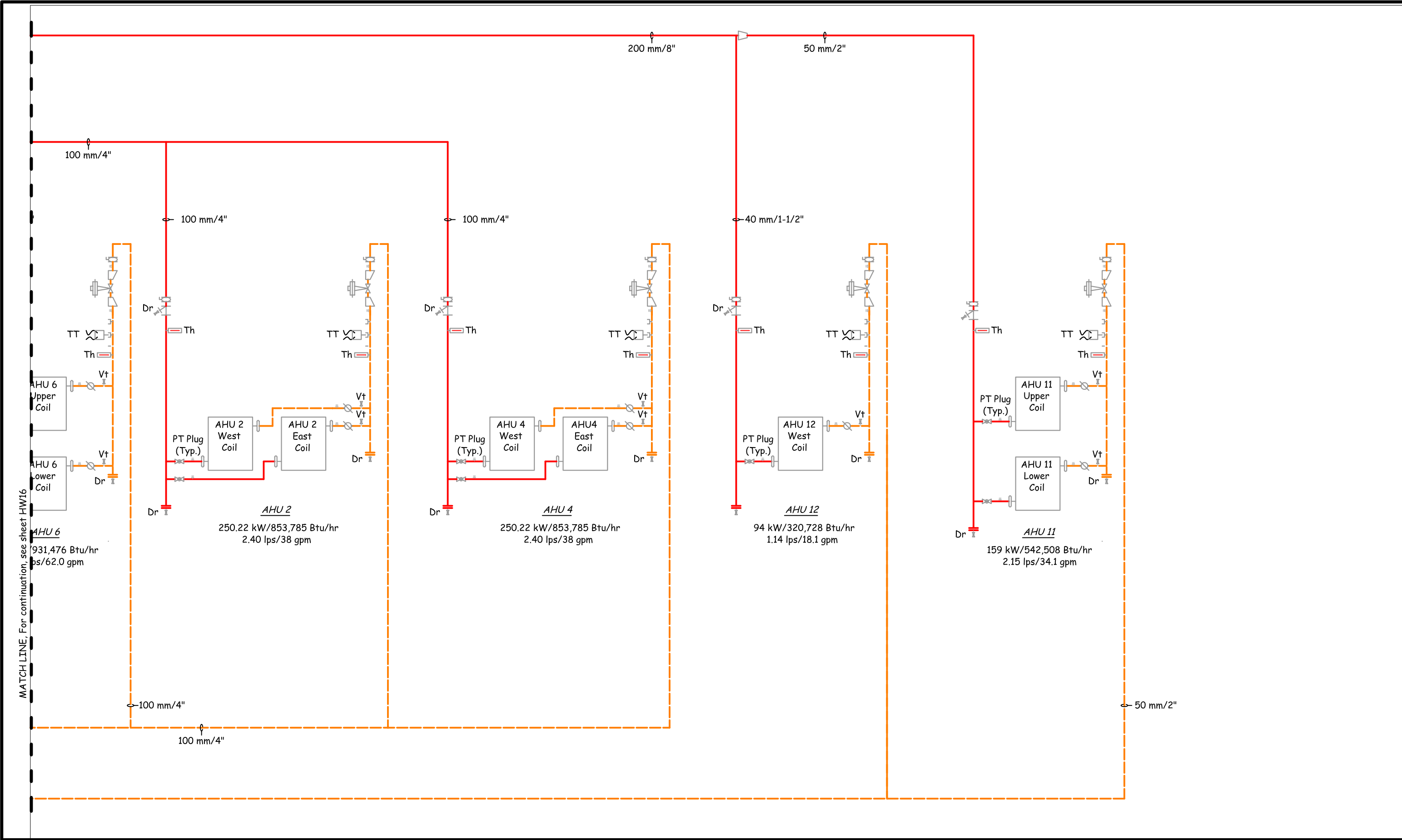
C:\Documents and Settings\David Sellers\My Documents\Workspace\00 - FDE\Seattle Federal Courthouse\System Diagrams\Heating Water System Flow Diagram r7.2.dwg, HW16, 12/13/2007 11:31:58 AM, David Sellers, Facility Dynamics Engineering, Adobe PDF



New Seattle Court House Heating Water System Flow Diagram

Revisions: Release 3/23/04	Drawn by: DAS	Date: April 29, 2002	HW16
	Checked by:	Plot date: May 1, 2002	

C:\Documents and Settings\David Sellers\My Documents\Workspace\00 - FDE\Seattle Federal Courthouse\System Diagrams\Heating Water System Flow Diagram.rvt.dwg, HW17, 12/13/2007 11:32:27 AM, David Sellers, Facility Dynamics Engineering, Adobe PDF



New Seattle Court House Heating Water System Flow Diagram

Revisions: Release 3/23/04	Drawn by: DAS	Date: April 29, 2002	HW17
	Checked by:	Plot date: May 1, 2002	