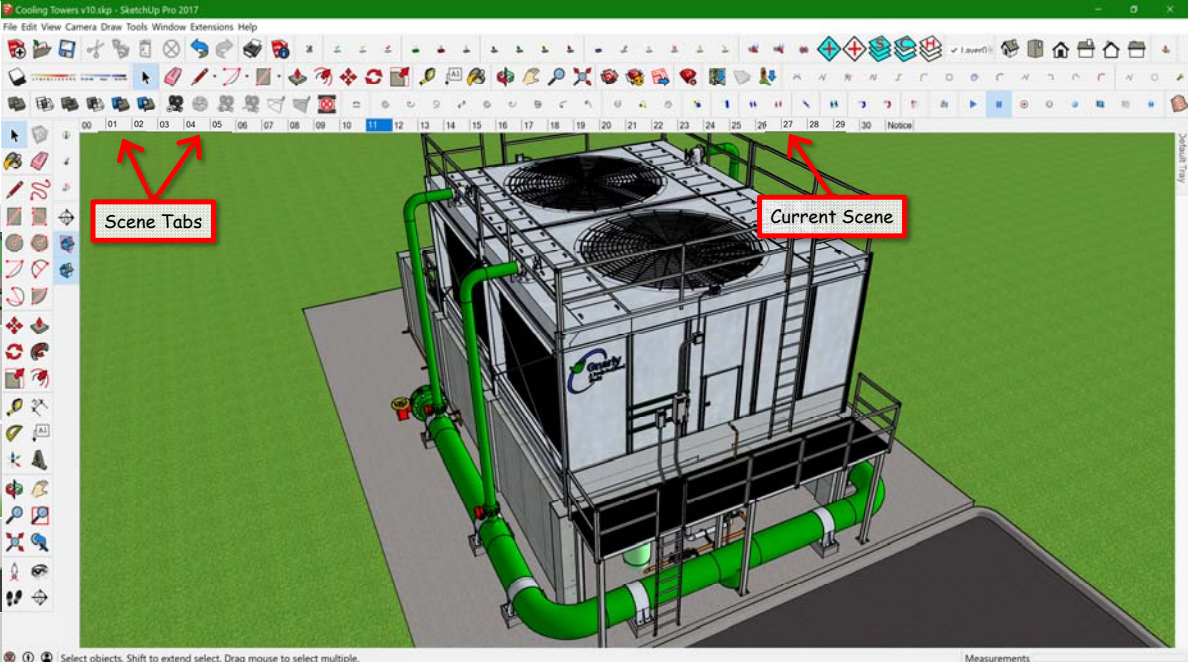


Cooling Tower Model Scene Guide

Version 1 (April 30, 2018)

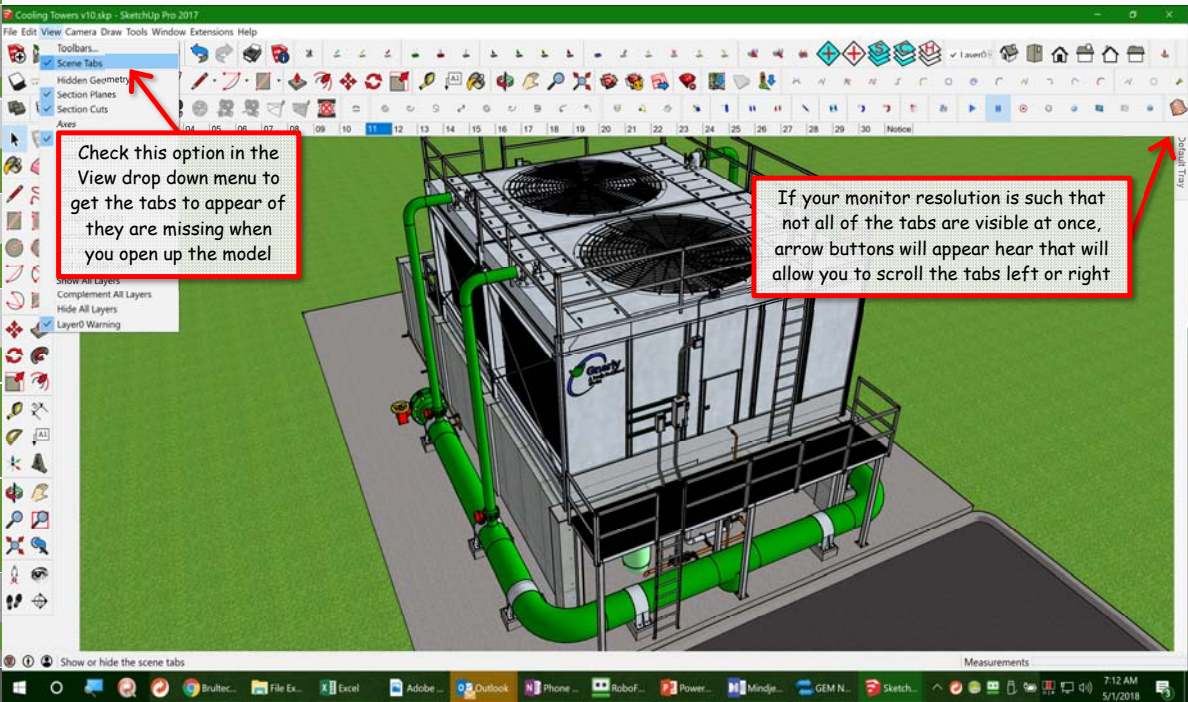
To make the scene tabs more compact in the model so more of them will display across the top of the image, I have numbered them rather than giving them descriptive labels. The list below is a kind of "cheat sheet" that will help you remember what view is associated with a

Scene Number	Scene Description	Scene Thumbnail
Notice	Copyright notice and permissions link	
0	Site viewed from the top of a hill on the road there several miles away	
1	Site as viewed from almost to the entry driveway	
2	Veiw getting out of your car in the parking lot	
3	Looking at the top of the guest room tower	
4	Walking towards the cooling towers	
5	Getting closer to the cooling towers	
6	Cooling towers viewed from the ground level	
7	Looking towards the central plant	
8	Walking towards the far end of the hotel	
9	Walking towards the far end of the hotel about to turn around	
10	Looking towards the Ballroom location	
11	Tower overview from above	
12	Tower overview from above, hot basins open	
13	Towers from behind at ground level	
14	Underneath the tower near the floor sump	
15	Looking at cups and iPhone	
16	CT-1 Starters and disconnects	
17	CT-1 float valve and overflow	
18	Make-up Meter	
19	Electrical equipment sitting on the ground under the tower	
20	CT-2 Starters and disconnects	
21	CT-2 fan motor and gear box	
22	CT-2 fan motor and gear box	
23	Vibration safety switch	
24	Under CT-1	
25	Basin heater junction box	
26	Data logger	
27	Cooling tower over view with side panels and hot basin covers open	



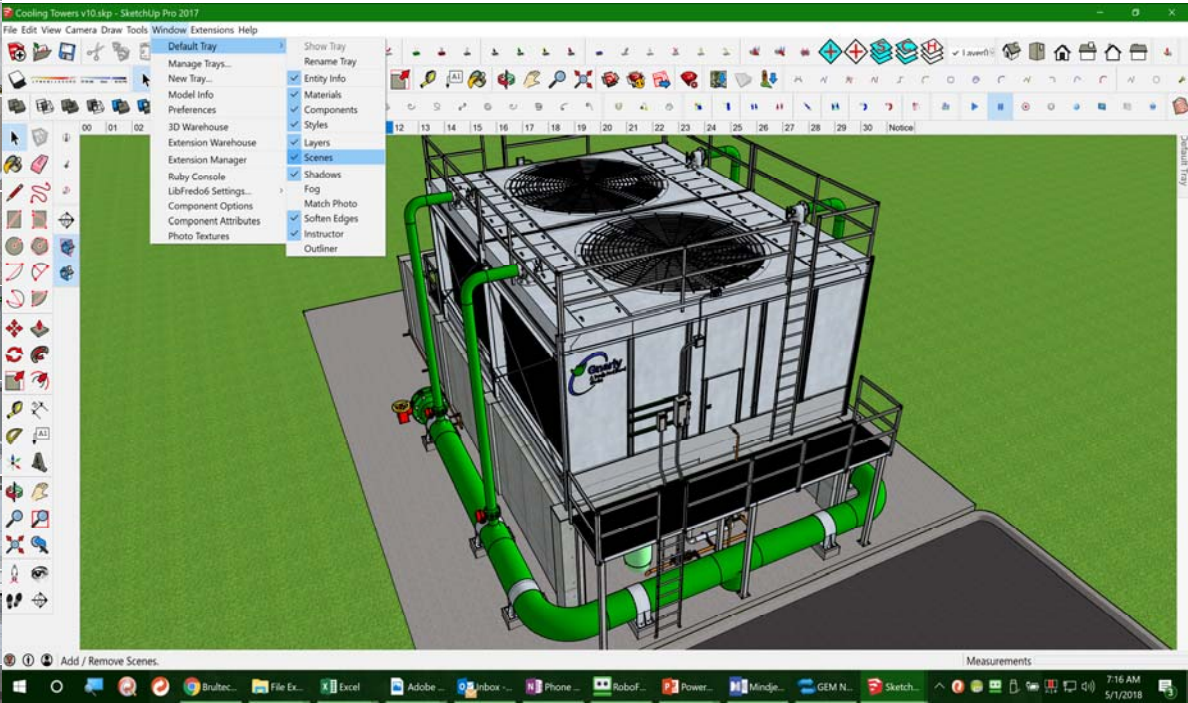
Besides using the commands like Zoom, Pan, Orbit, Position Camera, Walk, Look Around, and layer visibility to control what you are seeing, Sketchup allows you to save a view that you have navigated too as a "Scene". The Scene includes things like the position of the camera, the visibility of the various layers, the exposure of hidden geometry, etc.

To make it easier to work with the model, I have set up a number of scenes that will get you in the general vicinity of something that might be of interest in the model to save you time and effort relative to navigating to the view. The little "tabs" that you see across the top of the image in the screen shot above each contain a saved "Scene" in the model. The tab for the current scene is blue (tab 11 in the image above)



If you don't see the little tabs, you may need to turn them on. This can be done opening the "View" drop down menu and clicking next to "Scene Tabs" which will put a check mark there and cause the tabs to show up.

The number of tabs that will be visible will depend on the resolution of your monitor. My monitor is a very high resolution one so don't be surprised if you don't see as many tabs on your screen as are visible in the screen shots of my screen. The little black arrow keys at the upper right of the image window will allow you to scroll left or right and expose more tabs if some of them are hidden.



If you want to create your own scenes, turn layers on and off, etc., you can use the "Window" drop down menu to create "Tray's" that contain additional menus for controlling layers, creating scenes, etc. The trays can be docked or set to autohide depending on the features you select via the check marks.

For tutorials on scenes, layers and other Sketchup features, visit the [Sketchup YouTube channel](#).



