

SACRAMENTO/EXECUTIVE CA

Latitude = 38.52 N

WMO No. 724830

Longitude = 121.50 W

Elevation = 26 feet

Period of Record = 1973 to 1996

Average Pressure = 29.93 inches Hg

Design Criteria Data

| | Design Value | Mean Coincident (Average) Values | | | |
|--|---------------------|----------------------------------|-------------------------|------------------------|-----------------------------|
| | | Wet Bulb Temperature (°F) | Humidity Ratio (gr/lb) | Wind Speed (mph) | Prevailing Direction (NSEW) |
| Dry Bulb Temperature (T) | (°F) | | | | |
| Median of Extreme Highs | 105 | 72 | 65 | 8.5 | SSW |
| 0.4% Occurrence | 100 | 70 | 60 | 8.1 | SW |
| 1.0% Occurrence | 97 | 69 | 59 | 8.4 | SSW |
| 2.0% Occurrence | 94 | 68 | 60 | 8.7 | SSW |
| Mean Daily Range | 24 | - | - | - | - |
| 97.5% Occurrence | 37 | 36 | 29 | 3.4 | NW |
| 99.0% Occurrence | 34 | 33 | 26 | 3.0 | NNW |
| 99.6% Occurrence | 31 | 30 | 22 | 2.6 | NW |
| Median of Extreme Lows | 27 | 26 | 16 | 3.7 | NNW |
| | Design Value | Mean Coincident (Average) Values | | | |
| | | Dry Bulb Temperature (°F) | Humidity Ratio (gr/lb) | Wind Speed (mph) | Prevailing Direction (NSEW) |
| Wet Bulb Temperature (T_{wb}) | (°F) | | | | |
| Median of Extreme Highs | 76 | 98 | 97 | 7.7 | SSW |
| 0.4% Occurrence | 72 | 96 | 77 | 8.3 | SSW |
| 1.0% Occurrence | 70 | 93 | 72 | 8.6 | SSW |
| 2.0% Occurrence | 69 | 91 | 69 | 8.7 | SSW |
| | Design Value | Mean Coincident (Average) Values | | | |
| | | Dry Bulb Temperature (°F) | Vapor Pressure (in. Hg) | Wind Speed (mph) | Prevailing Direction (NSEW) |
| Humidity Ratio (HR) | (gr/lb) | | | | |
| Median of Extreme Highs | 103 | 90 | 0.69 | 7.6 | SSW |
| 0.4% Occurrence | 86 | 84 | 0.58 | 7.1 | SSW |
| 1.0% Occurrence | 81 | 80 | 0.54 | 7.3 | SSW |
| 2.0% Occurrence | 75 | 77 | 0.50 | 7.9 | SSW |
| Air Conditioning/ Humid Area Criteria | # of Hours | T ≥ 93°F | T ≥ 80°F | T _{wb} ≥ 73°F | T _{wb} ≥ 67°F |
| | | 227 | 1033 | 28 | 403 |

Other Site Data

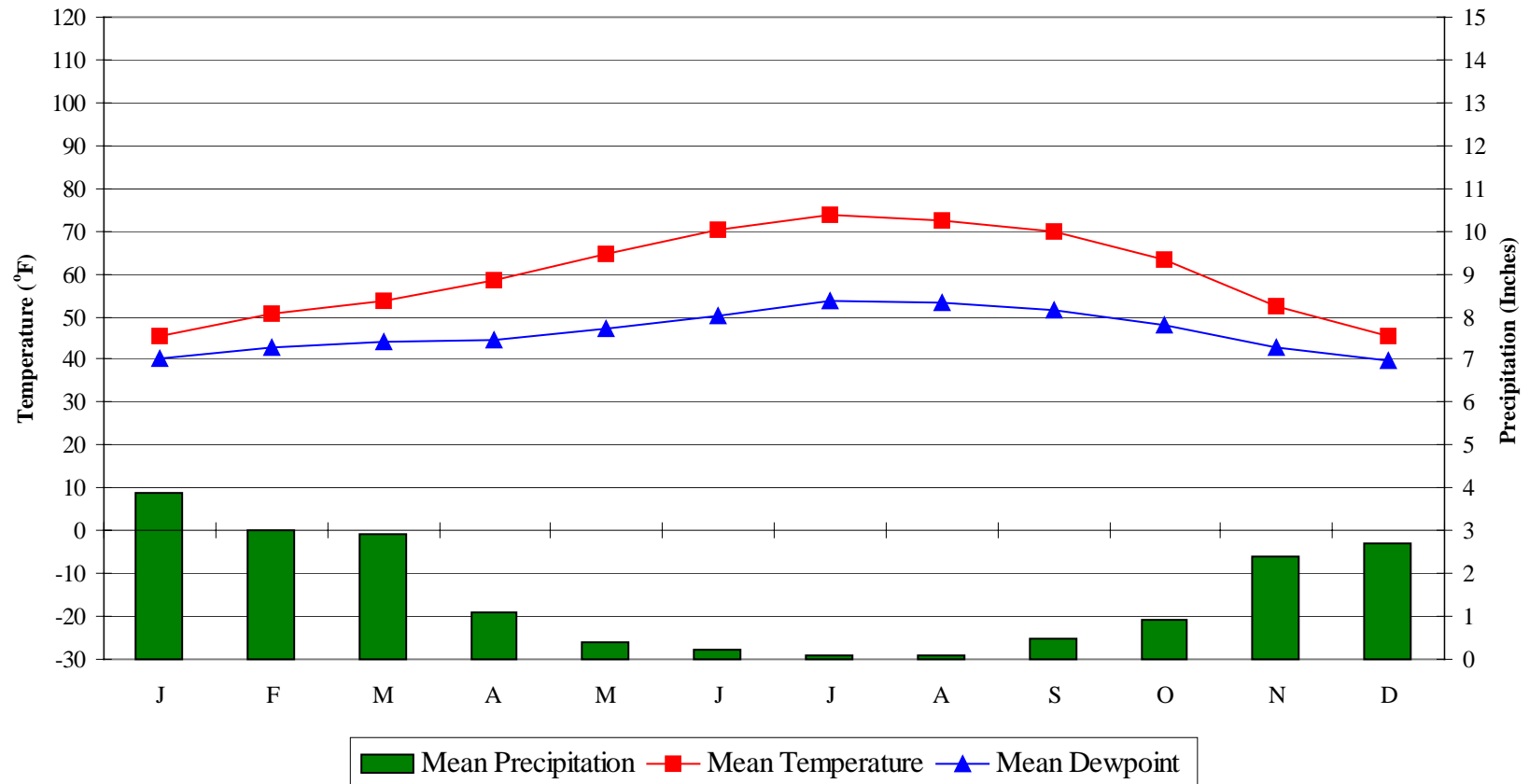
| Weather Region | Rain Rate 100 Year Recurrence (in./hr) | Basic Wind Speed 3 sec gust @ 33 ft 50 Year Recurrence (mph) | Ventilation Cooling Load Index (Ton-hr/cfm/yr) Base 75°F-RH 60% Latent + Sensible |
|--|--|--|---|
| 8 | 1.3 | 85 | 0.0 + 1.2 |
| Ground Water Temperature (°F) 50 Foot Depth * | Frost Depth 50 Year Recurrence (in.) | Ground Snow Load 50 Year Recurrence (lb/ft ²) | Average Annual Freeze-Thaw Cycles (#) |
| 62.6 | 0 | 0 | 8 |

*Note: Temperatures at greater depths can be estimated by adding 1.5°F per 100 feet additional depth.

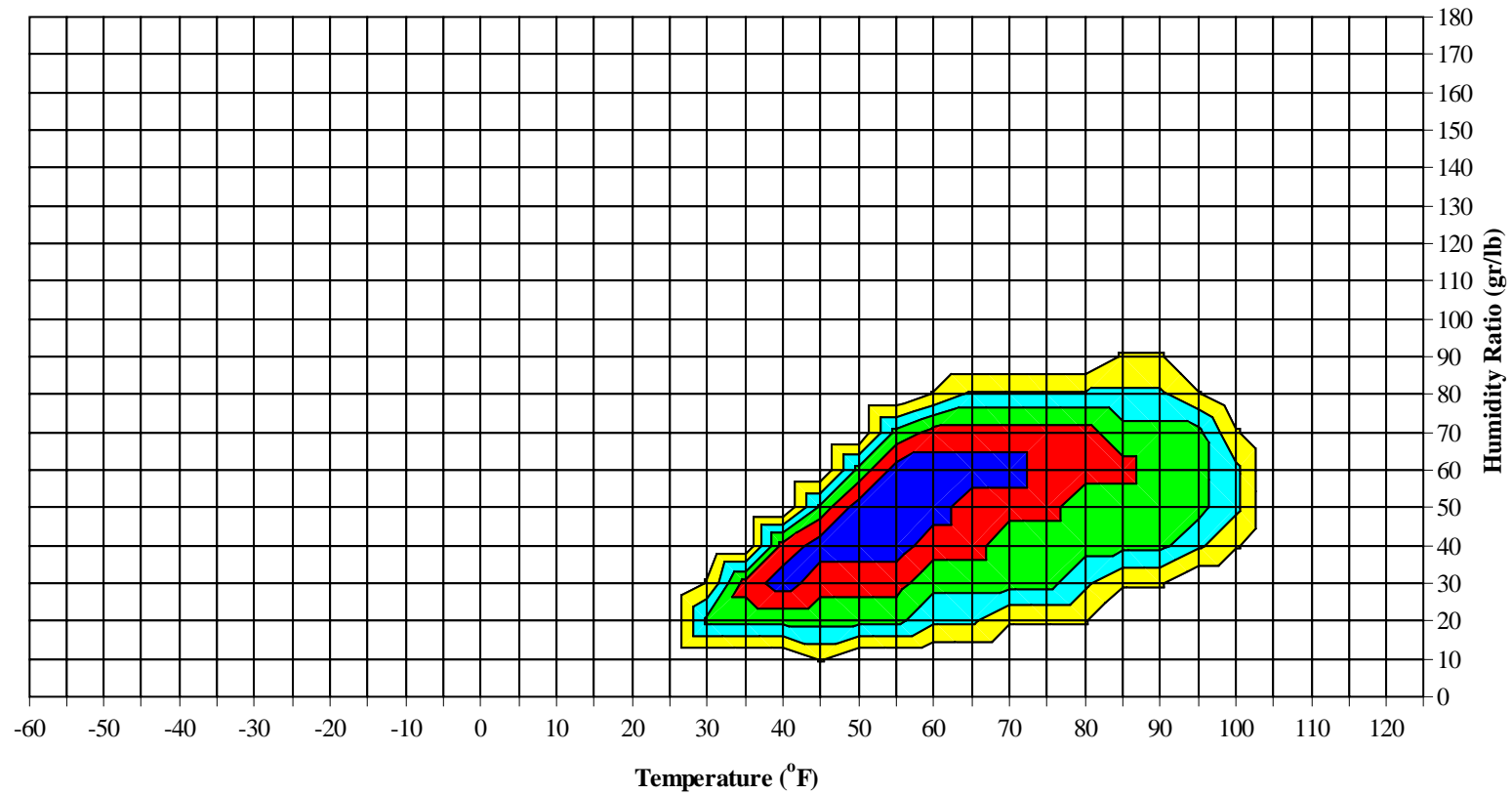
SACRAMENTO/EXECUTIVE CA

WMO No. 724830

Average Annual Climate

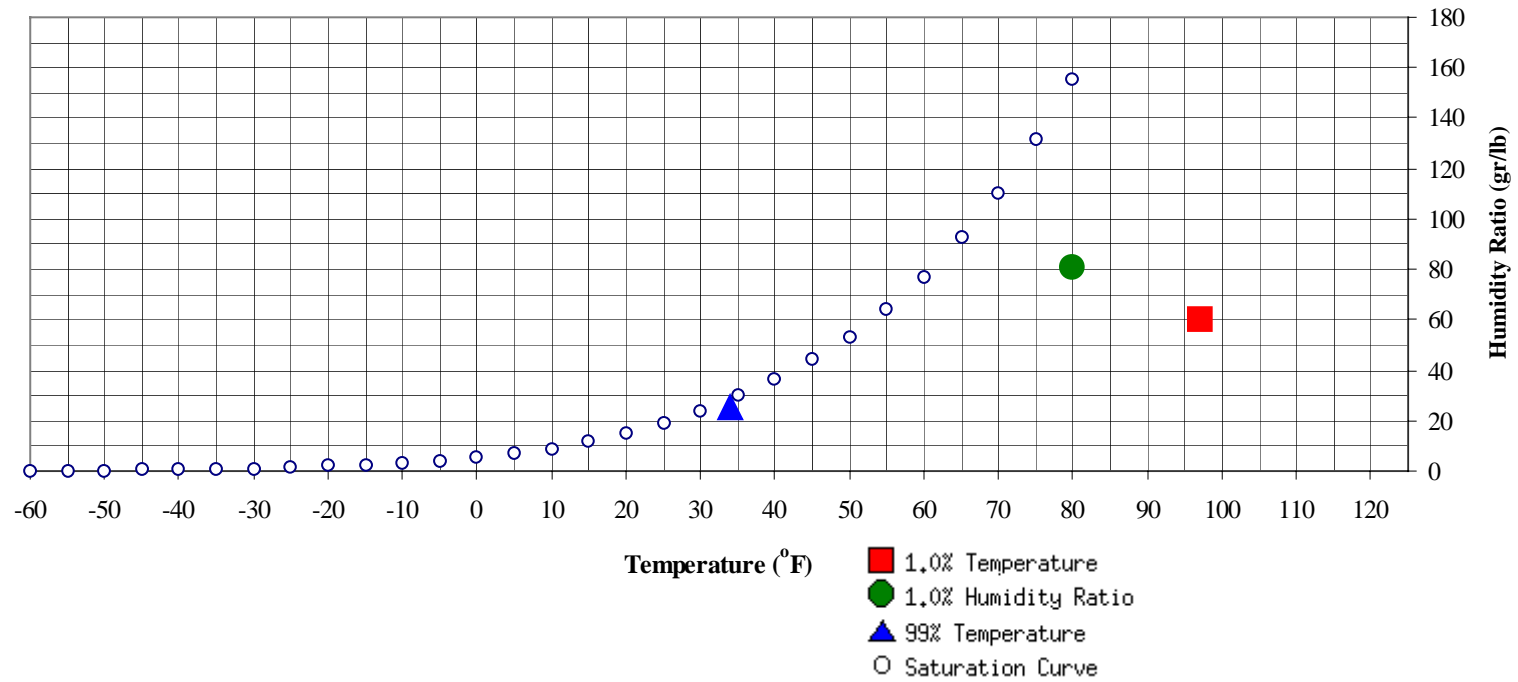


Long Term Psychrometric Summary



- 50% of all observations
- 80% of all observations
- 95% of all observations
- 97.5% of all observations
- 99% of all observations

Psychrometric Summary of Peak Design Values



| 99% Dry Bulb | (°F) | MCHR (gr/lb) | Enthalpy (btu/lb) | 1.0% Humidity Ratio | (gr/lb) | MCDB (°F) | MCWB (°F) | MC Dewpt (°F) | Enthalpy (btu/lb) |
|--------------|------|-----------------|----------------------|------------------------|---------|--------------|--------------|------------------|----------------------|
| | 34 | 25.4 | 12.1 | | 80.5 | 80 | 67.4 | 61 | 31.8 |

| 1.0% Dry Bulb | (°F) | MCHR (gr/lb) | MCWB (°F) | Enthalpy (btu/lb) |
|---------------|------|-----------------|--------------|----------------------|
| | 97 | 60.4 | 68.8 | 32.8 |

SACRAMENTO/EXECUTIVE CA

WMO No. 724830

Dry-Bulb Temperature Hours For An Average Year (Sheet 1 of 5)

Period of Record = 1973 to 1996

| Temperature Range (°F) | January | | | | | February | | | | | March | | | | |
|------------------------------|---------------------|----------------|----------------|--------------|--------------------------|---------------------|----------------|----------------|--------------|--------------------------|---------------------|----------------|----------------|--------------|--------------------------|
| | Hour Group (LST) | | | Total Obs | M C W B (°F) | Hour Group (LST) | | | Total Obs | M C W B (°F) | Hour Group (LST) | | | Total Obs | M C W B (°F) |
| | 01 To 08 | 09 To 16 | 17 To 00 | | | 01 To 08 | 09 To 16 | 17 To 00 | | | 01 To 08 | 09 To 16 | 17 To 00 | | |
| 110 / 114 | | | | | | | | | | | | | | | |
| 105 / 109 | | | | | | | | | | | | | | | |
| 100 / 104 | | | | | | | | | | | | | | | |
| 95 / 99 | | | | | | | | | | | | | | | |
| 90 / 94 | | | | | | | | | | | | | | | |
| 85 / 89 | | | | | | | | | | | | 0 | 0 | 0 | 64.7 |
| 80 / 84 | | | | | | | | | | | | 0 | 0 | 0 | 62.2 |
| 75 / 79 | | | | | | | 1 | | 1 | 57.0 | | 4 | 1 | 5 | 59.9 |
| 70 / 74 | | 0 | | 0 | 53.5 | | 6 | 2 | 8 | 57.4 | | 19 | 6 | 25 | 58.6 |
| 65 / 69 | | 4 | 0 | 4 | 54.5 | | 16 | 5 | 21 | 56.2 | 0 | 35 | 14 | 49 | 56.0 |
| 60 / 64 | 0 | 15 | 4 | 19 | 53.4 | 0 | 39 | 16 | 55 | 53.9 | 2 | 60 | 30 | 92 | 53.6 |
| 55 / 59 | 6 | 39 | 18 | 63 | 51.4 | 10 | 61 | 47 | 119 | 51.6 | 18 | 66 | 62 | 147 | 51.5 |
| 50 / 54 | 25 | 65 | 52 | 143 | 48.4 | 44 | 60 | 73 | 178 | 48.5 | 67 | 46 | 75 | 187 | 48.5 |
| 45 / 49 | 46 | 62 | 71 | 178 | 44.6 | 68 | 28 | 52 | 148 | 44.7 | 85 | 15 | 45 | 145 | 44.7 |
| 40 / 44 | 67 | 43 | 68 | 177 | 40.4 | 57 | 11 | 22 | 90 | 40.3 | 60 | 4 | 14 | 78 | 40.4 |
| 35 / 39 | 70 | 19 | 31 | 120 | 36.3 | 35 | 2 | 5 | 42 | 35.8 | 15 | 0 | 1 | 16 | 36.1 |
| 30 / 34 | 29 | 2 | 4 | 35 | 31.6 | 9 | 0 | 1 | 10 | 31.5 | 1 | | | 1 | 32.8 |
| 25 / 29 | 5 | 0 | 0 | 5 | 26.8 | 1 | 0 | 0 | 1 | 23.1 | | | | | |
| 20 / 24 | 0 | | 0 | 0 | 23.0 | 0 | | | 0 | 21.3 | | | | | |
| 15 / 19 | | | | | | | | | | | | | | | |

Caution: This summary reflects the typical distribution of temperature in a typical year. It does not reflect the typical moisture distribution. Because wet bulb temperatures are averaged, this summary understates the annual moisture load. For accurate moisture load data, see the long-term humidity summary and the ventilation and infiltration load pages in this manual.

Dry-Bulb Temperature Hours For An Average Year (Sheet 2 of 5)

Period of Record = 1973 to 1996

| Temperature Range (°F) | April | | | | | May | | | | | June | | | | |
|------------------------------|---------------------|----------------|----------------|--------------|--------------------------|---------------------|----------------|----------------|--------------|--------------------------|---------------------|----------------|----------------|--------------|--------------------------|
| | Hour Group (LST) | | | Total Obs | M C W B (°F) | Hour Group (LST) | | | Total Obs | M C W B (°F) | Hour Group (LST) | | | Total Obs | M C W B (°F) |
| | 01 To 08 | 09 To 16 | 17 To 00 | | | 01 To 08 | 09 To 16 | 17 To 00 | | | 01 To 08 | 09 To 16 | 17 To 00 | | |
| 110 / 114 | | | | | | | | | | | | | | | |
| 105 / 109 | | | | | | | | | | | | 0 | 0 | 0 | 70.6 |
| 100 / 104 | | | | | | | 1 | 0 | 1 | 67.4 | | 7 | 2 | 9 | 69.3 |
| 95 / 99 | | | | | | | 4 | 1 | 5 | 66.8 | | 17 | 6 | 23 | 68.0 |
| 90 / 94 | | 1 | 0 | 1 | 65.9 | | 14 | 4 | 18 | 65.6 | 0 | 27 | 10 | 37 | 66.4 |
| 85 / 89 | | 4 | 1 | 5 | 64.3 | | 22 | 8 | 30 | 64.1 | 0 | 36 | 14 | 50 | 64.6 |
| 80 / 84 | | 14 | 4 | 18 | 61.7 | 0 | 34 | 12 | 46 | 62.1 | 1 | 47 | 21 | 70 | 63.3 |
| 75 / 79 | | 25 | 8 | 33 | 59.3 | 1 | 45 | 18 | 64 | 60.2 | 5 | 40 | 27 | 73 | 61.4 |
| 70 / 74 | 0 | 40 | 16 | 56 | 57.4 | 5 | 47 | 28 | 80 | 58.2 | 12 | 37 | 34 | 83 | 59.4 |
| 65 / 69 | 2 | 50 | 23 | 75 | 55.4 | 13 | 42 | 37 | 91 | 56.2 | 30 | 21 | 38 | 89 | 57.6 |
| 60 / 64 | 9 | 53 | 40 | 102 | 53.2 | 35 | 29 | 48 | 112 | 54.5 | 57 | 8 | 45 | 111 | 55.6 |
| 55 / 59 | 35 | 37 | 58 | 130 | 51.3 | 64 | 9 | 51 | 124 | 52.1 | 84 | 1 | 34 | 119 | 53.2 |
| 50 / 54 | 82 | 14 | 61 | 158 | 48.3 | 86 | 2 | 35 | 123 | 48.9 | 45 | 0 | 7 | 52 | 50.1 |
| 45 / 49 | 75 | 2 | 23 | 100 | 44.6 | 36 | | 6 | 42 | 45.4 | 5 | | 0 | 5 | 46.2 |
| 40 / 44 | 32 | 0 | 5 | 37 | 40.6 | 7 | | 0 | 7 | 41.2 | 0 | | 0 | 0 | 43.0 |
| 35 / 39 | 4 | 0 | 0 | 4 | 35.6 | 0 | | 0 | 0 | 37.2 | | | | | |
| 30 / 34 | | 0 | | 0 | | 0 | | | 0 | 30.5 | | | | | |
| 25 / 29 | | | | | | | | | | | | | | | |
| 20 / 24 | | | | | | | | | | | | | | | |
| 15 / 19 | | | | | | | | | | | | | | | |

Caution: This summary reflects the typical distribution of temperature in a typical year. It does not reflect the typical moisture distribution. Because wet bulb temperatures are averaged, this summary understates the annual moisture load. For accurate moisture load data, see the long-term humidity summary and the ventilation and infiltration load pages in this manual.

Dry-Bulb Temperature Hours For An Average Year (Sheet 3 of 5)

Period of Record = 1973 to 1996

| Temperature Range (°F) | July | | | | | August | | | | | September | | | | |
|------------------------------|---------------------|----------------|----------------|--------------|--------------------------|---------------------|----------------|----------------|--------------|--------------------------|---------------------|----------------|----------------|--------------|--------------------------|
| | Hour Group (LST) | | | Total Obs | M C W B (°F) | Hour Group (LST) | | | Total Obs | M C W B (°F) | Hour Group (LST) | | | Total Obs | M C W B (°F) |
| | 01 To 08 | 09 To 16 | 17 To 00 | | | 01 To 08 | 09 To 16 | 17 To 00 | | | 01 To 08 | 09 To 16 | 17 To 00 | | |
| 110 / 114 | | 0 | 0 | 0 | 75.1 | | | | | | | | | | |
| 105 / 109 | | 2 | 1 | 3 | 73.1 | | 1 | 1 | 2 | 72.5 | | 0 | 0 | 0 | 71.9 |
| 100 / 104 | | 11 | 4 | 15 | 70.9 | | 9 | 3 | 12 | 70.5 | | 3 | 1 | 4 | 69.7 |
| 95 / 99 | | 28 | 9 | 37 | 69.5 | | 20 | 7 | 27 | 69.0 | | 12 | 4 | 16 | 67.7 |
| 90 / 94 | | 44 | 16 | 60 | 68.2 | | 37 | 12 | 49 | 67.5 | | 28 | 8 | 36 | 66.0 |
| 85 / 89 | 0 | 45 | 21 | 66 | 66.6 | 0 | 47 | 19 | 66 | 66.1 | 0 | 37 | 12 | 49 | 64.5 |
| 80 / 84 | 1 | 45 | 26 | 72 | 64.9 | 1 | 49 | 24 | 74 | 64.8 | 0 | 45 | 19 | 64 | 63.4 |
| 75 / 79 | 5 | 38 | 31 | 74 | 63.0 | 4 | 39 | 31 | 74 | 63.0 | 1 | 43 | 24 | 68 | 61.9 |
| 70 / 74 | 20 | 27 | 42 | 89 | 61.1 | 12 | 30 | 39 | 81 | 61.0 | 6 | 37 | 38 | 81 | 60.0 |
| 65 / 69 | 48 | 9 | 46 | 103 | 58.9 | 38 | 15 | 50 | 103 | 59.0 | 26 | 23 | 51 | 100 | 58.3 |
| 60 / 64 | 82 | 1 | 37 | 120 | 56.7 | 89 | 2 | 50 | 141 | 56.9 | 72 | 9 | 56 | 137 | 56.5 |
| 55 / 59 | 78 | 0 | 13 | 91 | 54.1 | 95 | 0 | 12 | 107 | 54.6 | 96 | 2 | 26 | 124 | 53.8 |
| 50 / 54 | 13 | | 1 | 14 | 51.0 | 10 | | 0 | 10 | 52.2 | 36 | 0 | 2 | 38 | 50.7 |
| 45 / 49 | 0 | | | 0 | 46.7 | 0 | | | 0 | 49.0 | 3 | 0 | | 3 | 46.3 |
| 40 / 44 | | | | | | | | | | | 0 | | | 0 | 40.0 |
| 35 / 39 | | | | | | | | | | | | | | | |
| 30 / 34 | | | | | | | | | | | | | | | |
| 25 / 29 | | | | | | | | | | | | | | | |
| 20 / 24 | | | | | | | | | | | | | | | |
| 15 / 19 | | | | | | | | | | | | | | | |

Caution: This summary reflects the typical distribution of temperature in a typical year. It does not reflect the typical moisture distribution. Because wet bulb temperatures are averaged, this summary understates the annual moisture load. For accurate moisture load data, see the long-term humidity summary and the ventilation and infiltration load pages in this manual.

Dry-Bulb Temperature Hours For An Average Year (Sheet 4 of 5)

Period of Record = 1973 to 1996

| Temperature Range (°F) | October | | | | | November | | | | | December | | | | |
|------------------------------|---------------------|----------------|----------------|--------------|--------------------------|---------------------|----------------|----------------|--------------|--------------------------|---------------------|----------------|----------------|--------------|--------------------------|
| | Hour Group (LST) | | | Total Obs | M C W B (°F) | Hour Group (LST) | | | Total Obs | M C W B (°F) | Hour Group (LST) | | | Total Obs | M C W B (°F) |
| | 01 To 08 | 09 To 16 | 17 To 00 | | | 01 To 08 | 09 To 16 | 17 To 00 | | | 01 To 08 | 09 To 16 | 17 To 00 | | |
| 110 / 114 | | | | | | | | | | | | | | | |
| 105 / 109 | | | | | | | | | | | | | | | |
| 100 / 104 | | | | | | | | | | | | | | | |
| 95 / 99 | | 2 | 0 | 2 | 66.5 | | | | | | | | | | |
| 90 / 94 | | 9 | 1 | 10 | 65.2 | | | | | | | | | | |
| 85 / 89 | | 15 | 3 | 18 | 63.4 | | | | | | | | | | |
| 80 / 84 | | 31 | 7 | 38 | 61.9 | | 1 | | 1 | 58.9 | | | | | |
| 75 / 79 | 0 | 44 | 13 | 57 | 60.3 | | 7 | 0 | 7 | 58.9 | | | | | |
| 70 / 74 | 1 | 48 | 24 | 73 | 58.6 | | 20 | 2 | 22 | 57.6 | | 0 | | 0 | 51.3 |
| 65 / 69 | 6 | 47 | 43 | 96 | 56.9 | 0 | 33 | 8 | 41 | 55.6 | | 3 | 0 | 3 | 55.8 |
| 60 / 64 | 35 | 34 | 68 | 137 | 55.4 | 6 | 50 | 26 | 82 | 53.9 | 1 | 19 | 3 | 23 | 53.0 |
| 55 / 59 | 76 | 14 | 60 | 151 | 52.7 | 18 | 54 | 51 | 123 | 51.3 | 8 | 45 | 18 | 71 | 51.2 |
| 50 / 54 | 87 | 4 | 24 | 115 | 49.2 | 52 | 45 | 73 | 170 | 48.4 | 25 | 61 | 47 | 133 | 48.0 |
| 45 / 49 | 35 | 0 | 4 | 39 | 45.1 | 68 | 21 | 52 | 141 | 44.4 | 44 | 57 | 71 | 172 | 44.5 |
| 40 / 44 | 7 | | 0 | 7 | 41.0 | 57 | 7 | 23 | 87 | 40.4 | 64 | 39 | 67 | 170 | 40.4 |
| 35 / 39 | 0 | | | 0 | 37.9 | 30 | 1 | 6 | 37 | 36.2 | 64 | 20 | 35 | 119 | 36.2 |
| 30 / 34 | 0 | | | 0 | | 8 | | 0 | 8 | 31.8 | 33 | 3 | 7 | 43 | 31.5 |
| 25 / 29 | | | | | | 0 | | | 0 | 27.9 | 6 | 0 | 1 | 7 | 26.4 |
| 20 / 24 | | | | | | | | | | | 2 | 0 | 0 | 2 | 20.2 |
| 15 / 19 | | | | | | | | | | | 0 | | | 0 | 15.8 |

Caution: This summary reflects the typical distribution of temperature in a typical year. It does not reflect the typical moisture distribution. Because wet bulb temperatures are averaged, this summary understates the annual moisture load. For accurate moisture load data, see the long-term humidity summary and the ventilation and infiltration load pages in this manual.

SACRAMENTO/EXECUTIVE CA

WMO No. 724830

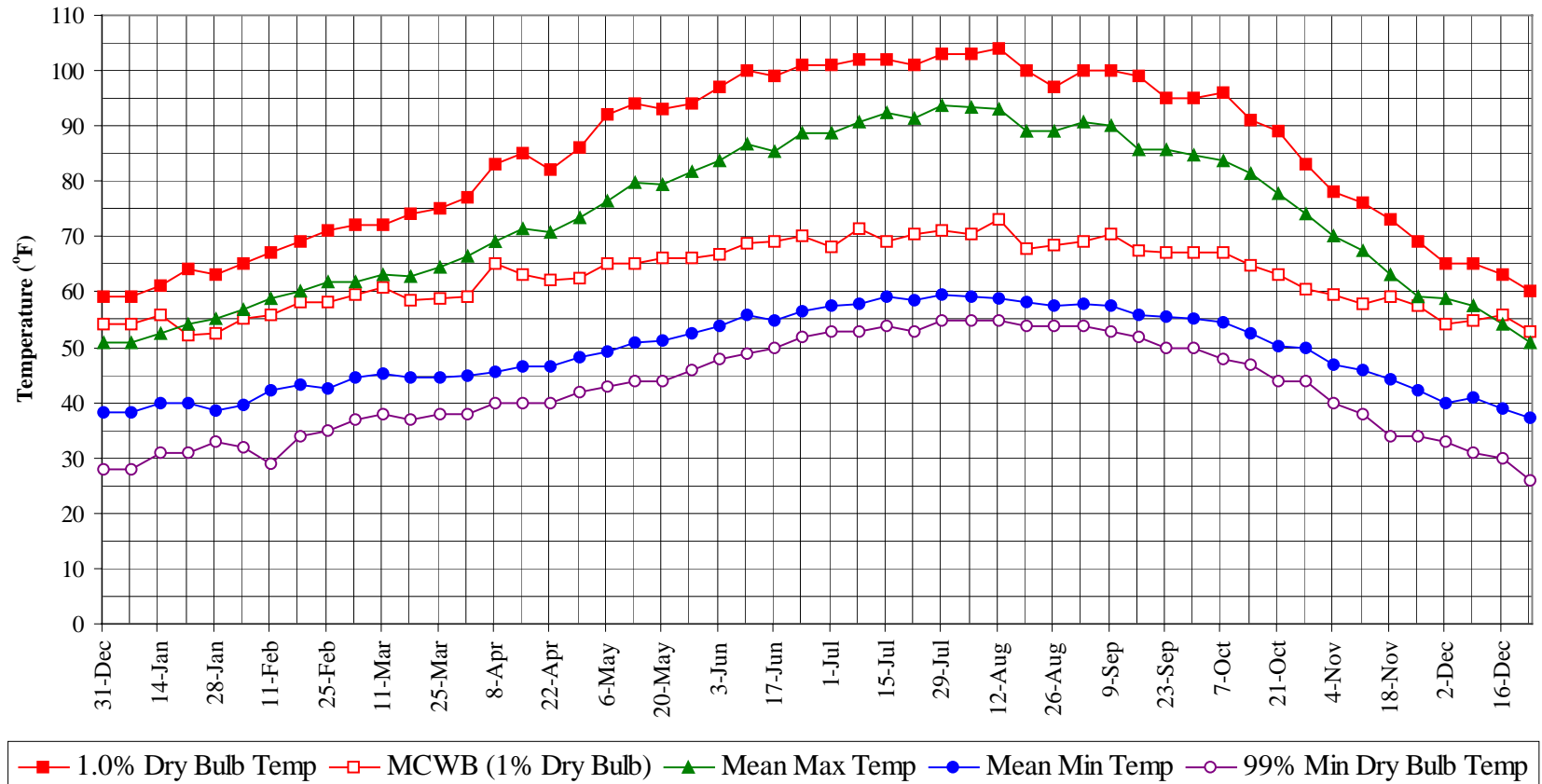
Dry-Bulb Temperature Hours For An Average Year (Sheet 5 of 5)

Period of Record = 1973 to 1996

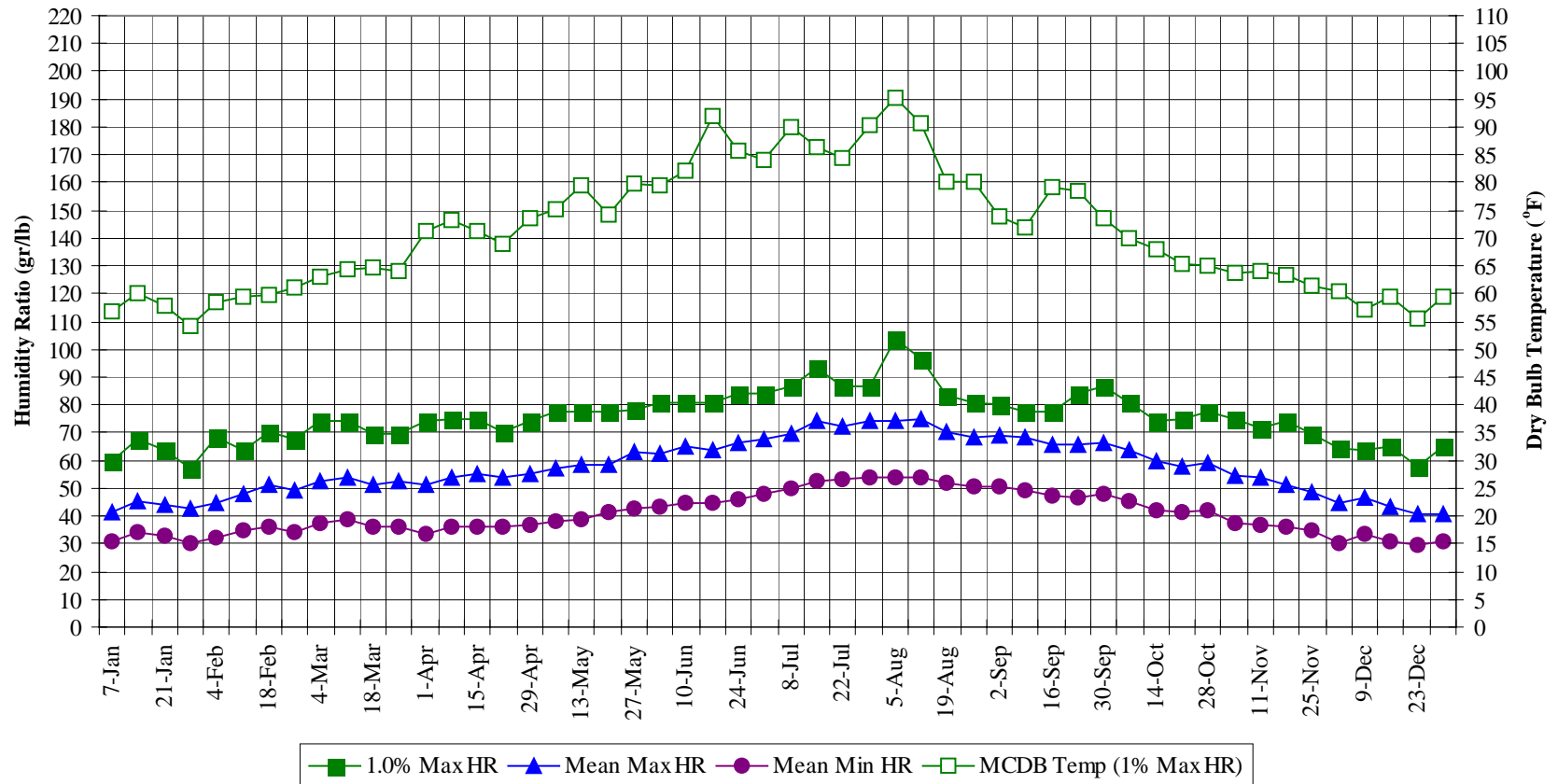
| Annual Totals | | | | | |
|------------------------------|---------------------|----------------|----------------|--------------|--------------------------|
| Temperature Range (°F) | Hour Group (LST) | | | Total Obs | M C W B (°F) |
| | 01 To 08 | 09 To 16 | 17 To 00 | | |
| 110 / 114 | | 0 | 0 | 0 | 75.1 |
| 105 / 109 | | 4 | 2 | 6 | 72.6 |
| 100 / 104 | | 30 | 10 | 40 | 70.3 |
| 95 / 99 | | 83 | 28 | 111 | 68.6 |
| 90 / 94 | 0 | 158 | 52 | 210 | 67.0 |
| 85 / 89 | 0 | 205 | 78 | 283 | 65.3 |
| 80 / 84 | 3 | 267 | 114 | 384 | 63.5 |
| 75 / 79 | 16 | 286 | 153 | 455 | 61.5 |
| 70 / 74 | 57 | 310 | 230 | 598 | 59.4 |
| 65 / 69 | 163 | 296 | 314 | 773 | 57.3 |
| 60 / 64 | 391 | 316 | 422 | 1129 | 55.2 |
| 55 / 59 | 589 | 330 | 450 | 1370 | 52.4 |
| 50 / 54 | 572 | 296 | 450 | 1319 | 48.7 |
| 45 / 49 | 464 | 185 | 324 | 973 | 44.6 |
| 40 / 44 | 349 | 103 | 200 | 653 | 40.4 |
| 35 / 39 | 220 | 43 | 78 | 341 | 36.2 |
| 30 / 34 | 81 | 6 | 11 | 98 | 31.6 |
| 25 / 29 | 12 | 1 | 1 | 14 | 26.2 |
| 20 / 24 | 2 | 0 | 0 | 2 | 20.4 |
| 15 / 19 | 0 | | | 0 | 15.8 |
| | | | | | |
| | | | | | |
| | | | | | |
| | | | | | |
| | | | | | |
| | | | | | |
| | | | | | |
| | | | | | |
| | | | | | |
| | | | | | |
| | | | | | |
| | | | | | |
| | | | | | |
| | | | | | |
| | | | | | |
| | | | | | |
| | | | | | |
| | | | | | |
| | | | | | |
| | | | | | |
| | | | | | |
| | | | | | |
| | | | | | |
| | | | | | |
| | | | | | |
| | | | | | |
| | | | | | |
| | | | | | |
| | | | | | |
| | | | | | |
| | | | | | |
| | | | | | |
| | | | | | |
| | | | | | |
| | | | | | |
| | | | | | |
| | | | | | |
| | | | | | |
| | | | | | |
| | | | | | |
| | | | | | |
| | | | | | |
| | | | | | |
| | | | | | |
| | | | | | |
| | | | | | |
| | | | | | |
| | | | | | |
| | | | | | |
| | | | | | |
| | | | | | |
| | | | | | |
| | | | | | |
| | | | | | |
| | | | | | |
| | | | | | |
| | | | | | |
| | | | | | |
| | | | | | |
| | | | | | |
| | | | | | |
| | | | | | |
| | | | | | |
| | | | | | |
| | | | | | |
| | | | | | |
| | | | | | |
| | | | | | |
| | | | | | |
| | | | | | |
| | | | | | |
| | | | | | |
| | | | | | |
| | | | | | |
| | | | | | |
| | | | | | |
| | | | | | |
| | | | | | |
| | | | | | |
| | | | | | |
| | | | | | |
| | | | | | |
| | | | | | |
| | | | | | |
| | | | | | |
| | | | | | |
| | | | | | |
| | | | | | |
| | | | | | |
| | | | | | |
| | | | | | |
| | | | | | |
| | | | | | |
| | | | | | |
| | | | | | |
| | | | | | |
| | | | | | |
| | | | | | |
| | | | | | |
| | | | | | |
| | | | | | |
| | | | | | |
| | | | | | |
| | | | | | |
| | | | | | |
| | | | | | |
| | | | | | |
| | | | | | |
| | | | | | |
| | | | | | |
| | | | | | |
| | | | | | |
| | | | | | |
| | | | | | |
| | | | | | |
| | | | | | |
| | | | | | |
| | | | | | |
| | | | | | |
| | | | | | |
| | | | | | |
| | | | | | |
| | | | | | |
| | | | | | |
| | | | | | |
| | | | | | |
| | | | | | |
| | | | | | |
| | | | | | |
| | | | | | |
| | | | | | |
| | | | | | |
| | | | | | |
| | | | | | |
| | | | | | |
| | | | | | |
| | | | | | |
| | | | | | |
| | | | | | |
| | | | | | |
| | | | | | |
| | | | | | |
| | | | | | |
| | | | | | |
| | | | | | |
| | | | | | |
| | | | | | |
| | | | | | |
| | | | | | |
| | | | | | |
| | | | | | |
| | | | | | |
| | | | | | |
| | | | | | |
| | | | | | |
| | | | | | |
| | | | | | |
| | | | | | |
| | | | | | |
| | | | | | |
| | | | | | |
| | | | | | |
| | | | | | |
| | | | | | |
| | | | | | |
| | | | | | |
| | | | | | |
| | | | | | |
| | | | | | |
| | | | | | |
| | | | | | |
| | | | | | |
| | | | | | |
| | | | | | |
| | | | | | |
| | | | | | |
| | | | | | |
| | | | | | |
| | | | | | |
| | | | | | |
| | | | | | |
| | | | | | |
| | | | | | |
| | | | | | |
| | | | | | |
| | | | | | |
| | | | | | |
| | | | | | |
| | | | | | |
| | | | | | |
| | | | | | |
| | | | | | |
| | | | | | |
| | | | | | |
| | | | | | |

Caution: This summary reflects the typical distribution of temperature in a typical year. It does not reflect the typical moisture distribution. Because wet bulb temperatures are averaged, this summary understates the annual moisture load. For accurate moisture load data, see the long-term humidity summary and the ventilation and infiltration load pages in this manual.

Annual Summary of Temperatures



Long Term Humidity and Dry Bulb Temperature Summary

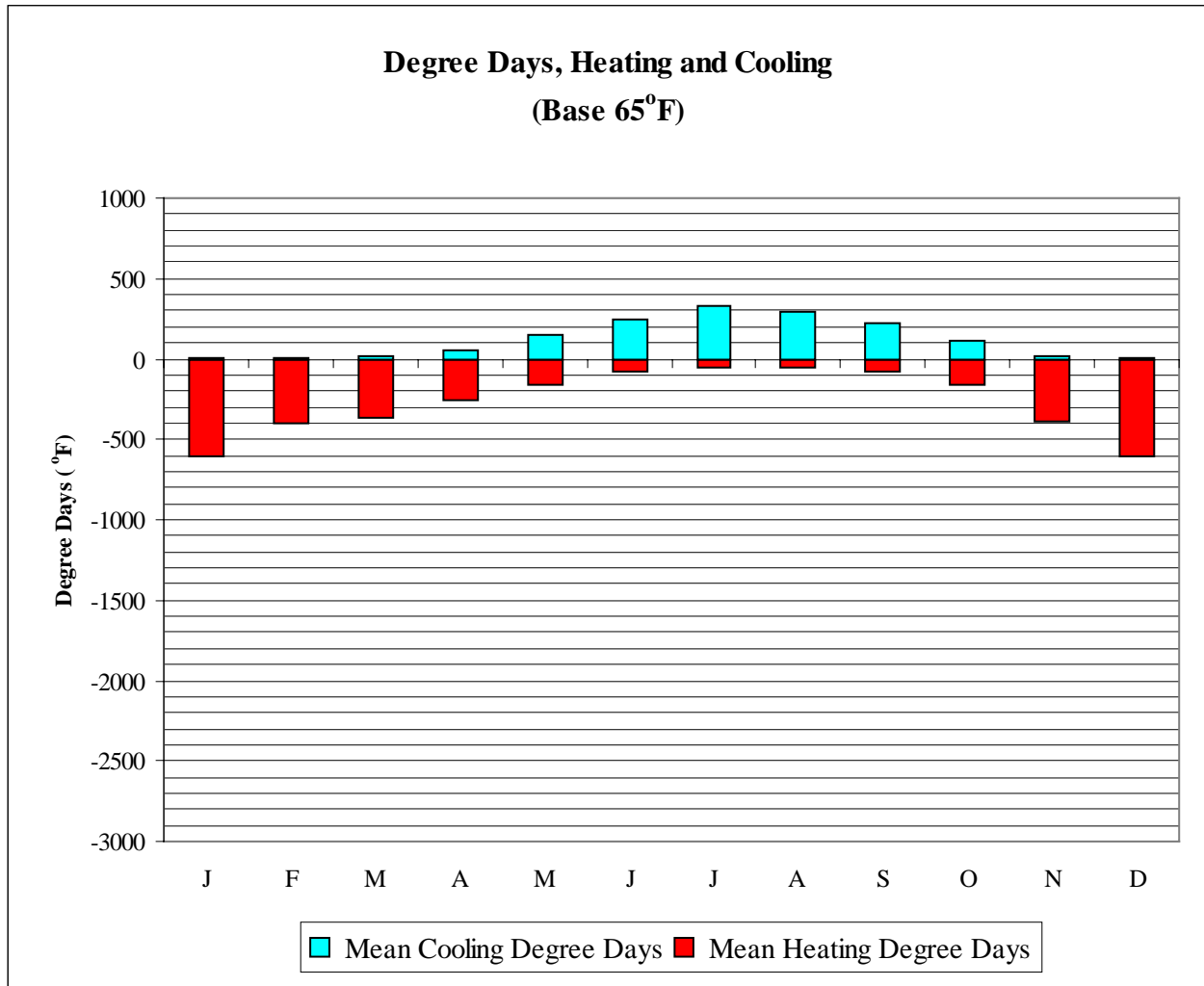


SACRAMENTO/EXECUTIVE CA

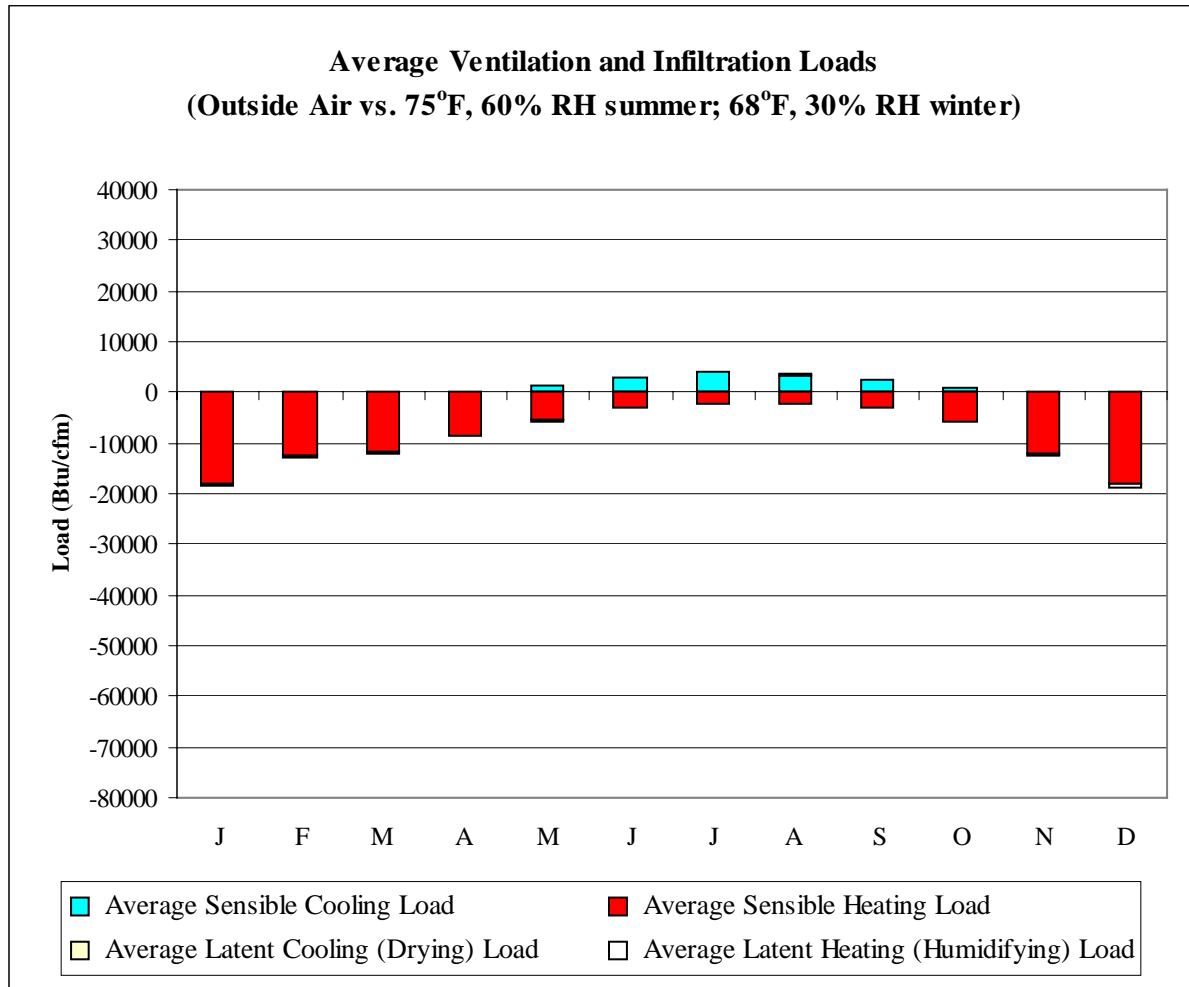
WMO No. 724830

Long Term Dry Bulb Temperature and Humidity Summary

| Week Ending | 1.0% Temp (°F) | MCWB @ 1% Temp (°F) | Mean Max Temp (°F) | Mean Min Temp (°F) | 99% Temp (°F) | 1.0% HR (gr/lb) | MCDB @ 1% HR (°F) | Mean Max HR (gr/lb) | Mean Min HR (gr/lb) |
|-------------|----------------|---------------------|--------------------|--------------------|---------------|-----------------|-------------------|---------------------|---------------------|
| 7-Jan | 59.0 | 54.3 | 50.8 | 38.2 | 28.0 | 59.5 | 56.8 | 41.7 | 31.1 |
| 14-Jan | 61.0 | 55.7 | 52.6 | 39.9 | 31.0 | 67.9 | 60.0 | 45.6 | 33.9 |
| 21-Jan | 64.0 | 52.2 | 54.1 | 39.8 | 31.0 | 63.7 | 57.9 | 43.9 | 32.6 |
| 28-Jan | 63.0 | 52.4 | 55.1 | 38.7 | 33.0 | 57.4 | 54.1 | 43.0 | 30.4 |
| 4-Feb | 65.0 | 55.3 | 56.9 | 39.6 | 32.0 | 68.6 | 58.6 | 44.9 | 31.9 |
| 11-Feb | 67.0 | 55.9 | 58.8 | 42.1 | 29.0 | 63.7 | 59.3 | 48.1 | 34.9 |
| 18-Feb | 69.0 | 58.3 | 60.3 | 43.3 | 34.0 | 70.0 | 59.7 | 50.9 | 36.3 |
| 25-Feb | 71.0 | 58.0 | 61.8 | 42.6 | 35.0 | 67.9 | 61.2 | 49.0 | 33.9 |
| 4-Mar | 72.0 | 59.6 | 62.0 | 44.7 | 37.0 | 74.2 | 62.9 | 52.6 | 37.8 |
| 11-Mar | 72.0 | 60.8 | 63.2 | 45.2 | 38.0 | 74.2 | 64.4 | 54.2 | 38.6 |
| 18-Mar | 74.0 | 58.6 | 62.9 | 44.4 | 37.0 | 69.3 | 64.6 | 51.5 | 35.9 |
| 25-Mar | 75.0 | 58.7 | 64.6 | 44.4 | 38.0 | 69.3 | 64.0 | 52.5 | 36.4 |
| 1-Apr | 77.0 | 59.1 | 66.4 | 44.8 | 38.0 | 74.2 | 71.3 | 51.2 | 33.5 |
| 8-Apr | 83.0 | 65.0 | 69.1 | 45.6 | 40.0 | 74.9 | 73.3 | 54.0 | 36.0 |
| 15-Apr | 85.0 | 63.3 | 71.5 | 46.4 | 40.0 | 74.9 | 71.3 | 54.9 | 35.9 |
| 22-Apr | 82.0 | 62.3 | 70.6 | 46.7 | 40.0 | 70.0 | 69.1 | 53.8 | 36.4 |
| 29-Apr | 86.0 | 62.4 | 73.4 | 48.3 | 42.0 | 74.2 | 73.6 | 55.1 | 36.6 |
| 6-May | 92.0 | 65.0 | 76.4 | 49.4 | 43.0 | 77.7 | 75.2 | 57.1 | 37.8 |
| 13-May | 94.0 | 65.2 | 79.7 | 50.7 | 44.0 | 77.7 | 79.6 | 58.6 | 39.0 |
| 20-May | 93.0 | 66.2 | 79.4 | 51.3 | 44.0 | 77.7 | 74.4 | 58.7 | 41.1 |
| 27-May | 94.0 | 66.3 | 81.8 | 52.4 | 46.0 | 78.4 | 79.7 | 62.9 | 43.0 |
| 3-Jun | 97.0 | 66.8 | 83.7 | 53.8 | 48.0 | 80.5 | 79.6 | 62.5 | 43.1 |
| 10-Jun | 100.0 | 68.8 | 86.7 | 55.7 | 49.0 | 80.5 | 82.1 | 65.3 | 44.5 |
| 17-Jun | 99.0 | 69.3 | 85.5 | 54.9 | 50.0 | 80.5 | 92.0 | 63.9 | 44.4 |
| 24-Jun | 101.0 | 70.0 | 88.6 | 56.6 | 52.0 | 84.0 | 85.6 | 66.4 | 46.2 |
| 1-Jul | 101.0 | 68.2 | 88.8 | 57.6 | 53.0 | 84.0 | 84.0 | 67.7 | 48.2 |
| 8-Jul | 102.0 | 71.4 | 90.7 | 57.7 | 53.0 | 86.8 | 89.9 | 69.5 | 49.6 |
| 15-Jul | 102.0 | 69.1 | 92.4 | 59.0 | 54.0 | 93.1 | 86.5 | 74.3 | 52.9 |
| 22-Jul | 101.0 | 70.4 | 91.2 | 58.5 | 53.0 | 86.8 | 84.5 | 72.4 | 53.5 |
| 29-Jul | 103.0 | 71.1 | 93.8 | 59.5 | 55.0 | 86.8 | 90.5 | 74.0 | 53.9 |
| 5-Aug | 103.0 | 70.6 | 93.4 | 59.2 | 55.0 | 103.6 | 95.2 | 74.2 | 53.8 |
| 12-Aug | 104.0 | 73.3 | 92.9 | 58.9 | 55.0 | 96.6 | 90.5 | 74.7 | 53.6 |
| 19-Aug | 100.0 | 67.8 | 89.0 | 58.2 | 54.0 | 83.3 | 80.1 | 70.1 | 52.1 |
| 26-Aug | 97.0 | 68.5 | 89.0 | 57.4 | 54.0 | 80.5 | 80.0 | 68.3 | 50.7 |
| 2-Sep | 100.0 | 69.2 | 90.9 | 58.0 | 54.0 | 79.8 | 73.9 | 69.1 | 50.3 |
| 9-Sep | 100.0 | 70.4 | 90.0 | 57.4 | 53.0 | 77.7 | 72.0 | 68.3 | 49.1 |
| 16-Sep | 99.0 | 67.6 | 85.8 | 55.7 | 52.0 | 77.7 | 79.0 | 65.7 | 47.1 |
| 23-Sep | 95.0 | 67.2 | 85.7 | 55.4 | 50.0 | 84.0 | 78.4 | 65.5 | 46.5 |
| 30-Sep | 95.0 | 67.1 | 84.6 | 55.2 | 50.0 | 86.8 | 73.7 | 66.4 | 47.8 |
| 7-Oct | 96.0 | 67.0 | 83.7 | 54.4 | 48.0 | 80.5 | 69.9 | 63.7 | 45.0 |
| 14-Oct | 91.0 | 64.7 | 81.3 | 52.7 | 47.0 | 74.2 | 67.9 | 59.5 | 42.3 |
| 21-Oct | 89.0 | 63.1 | 77.8 | 50.3 | 44.0 | 74.9 | 65.4 | 57.6 | 41.6 |
| 28-Oct | 83.0 | 60.6 | 74.2 | 49.8 | 44.0 | 77.7 | 65.1 | 58.8 | 41.8 |
| 4-Nov | 78.0 | 59.5 | 70.1 | 46.9 | 40.0 | 74.9 | 63.7 | 54.5 | 37.6 |
| 11-Nov | 76.0 | 57.9 | 67.5 | 45.8 | 38.0 | 71.4 | 63.9 | 53.8 | 36.6 |
| 18-Nov | 73.0 | 59.1 | 63.1 | 44.2 | 34.0 | 74.2 | 63.3 | 51.2 | 36.4 |
| 25-Nov | 69.0 | 57.5 | 59.2 | 42.1 | 34.0 | 69.3 | 61.4 | 48.6 | 34.5 |
| 2-Dec | 65.0 | 54.3 | 58.7 | 39.9 | 33.0 | 64.4 | 60.4 | 44.9 | 30.4 |
| 9-Dec | 65.0 | 54.8 | 57.5 | 40.9 | 31.0 | 63.7 | 57.0 | 46.8 | 33.7 |
| 16-Dec | 63.0 | 55.7 | 54.2 | 38.8 | 30.0 | 65.1 | 59.3 | 43.4 | 30.9 |
| 23-Dec | 60.0 | 53.0 | 50.9 | 37.4 | 26.0 | 58.1 | 55.5 | 40.7 | 29.6 |
| 31-Dec | 59.0 | 54.1 | 50.7 | 38.1 | 28.0 | 65.1 | 59.4 | 41.0 | 30.7 |



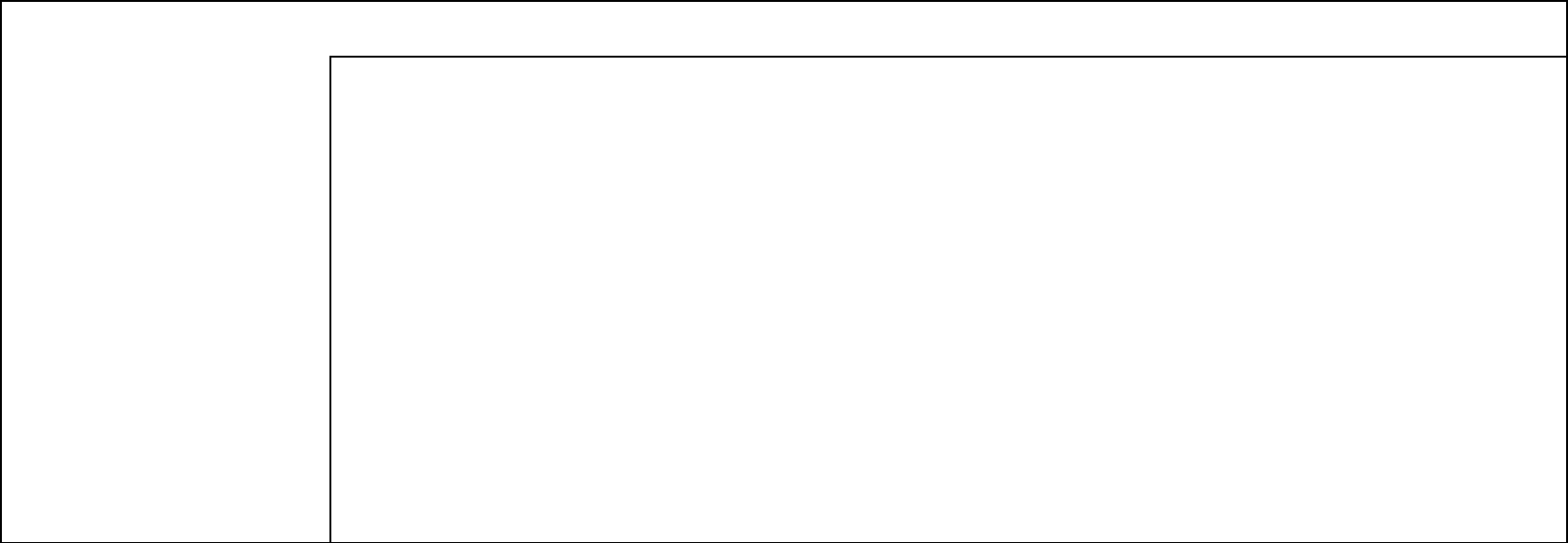
| | Mean Cooling Degree Days (°F) | Mean Heating Degree Days (°F) |
|-----|----------------------------------|----------------------------------|
| JAN | 0 | 600 |
| FEB | 4 | 407 |
| MAR | 13 | 361 |
| APR | 55 | 253 |
| MAY | 149 | 156 |
| JUN | 246 | 81 |
| JUL | 326 | 49 |
| AUG | 291 | 54 |
| SEP | 221 | 76 |
| OCT | 111 | 160 |
| NOV | 13 | 385 |
| DEC | 0 | 604 |
| ANN | 1429 | 3186 |



| | Average Sensible Cooling Load | Average Sensible Heating Load | Average Latent Cooling Load | Average Latent Heating Load |
|-----|----------------------------------|----------------------------------|--------------------------------|--------------------------------|
| | (Btu/cfm) | (Btu/cfm) | (Btu/cfm) | (Btu/cfm) |
| JAN | 0 | -17947 | 0 | -631 |
| FEB | 0 | -12692 | 2 | -390 |
| MAR | 12 | -11588 | 3 | -343 |
| APR | 269 | -8409 | 9 | -310 |
| MAY | 1302 | -5495 | 24 | -105 |
| JUN | 2705 | -3113 | 59 | -35 |
| JUL | 3946 | -2103 | 156 | -1 |
| AUG | 3361 | -2327 | 150 | -1 |
| SEP | 2318 | -3073 | 49 | -37 |
| OCT | 820 | -5749 | 16 | -186 |
| NOV | 18 | -12136 | 1 | -464 |
| DEC | 0 | -18057 | 0 | -765 |
| ANN | 14751 | -102689 | 469 | -3268 |

Average Annual Solar Radiation – Nearest Available Site
(Source: National Renewable Energy Laboratory, Golden CO, 1995)

No Solar Radiation
Data Available



Average Annual Solar Heat and Illumination – Nearest Available Site

(Source: National Renewable Energy Laboratory, Golden CO, 1995)

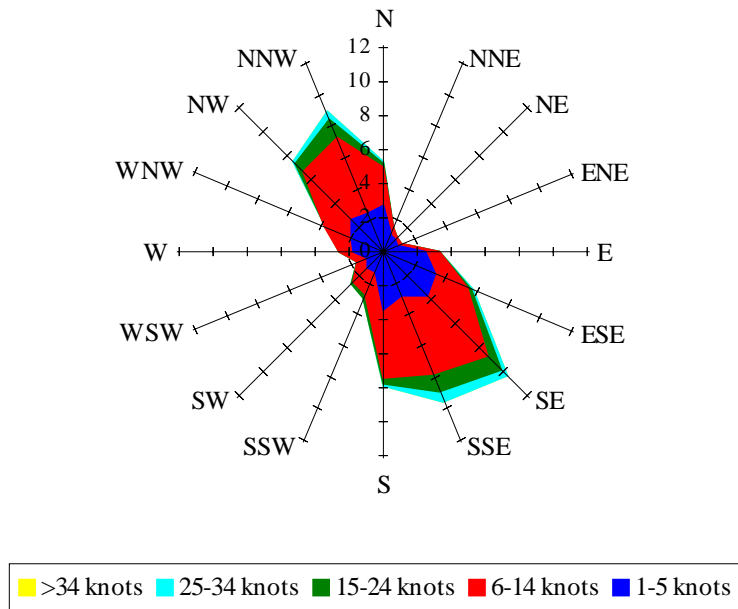
| | |
|--|--|
| | |
| | |

| | | |
|--|--|--|
| | | |
| | | |

| | | |
|--|--|--|
| | | |
| | | |

Wind Summary - December, January, and February

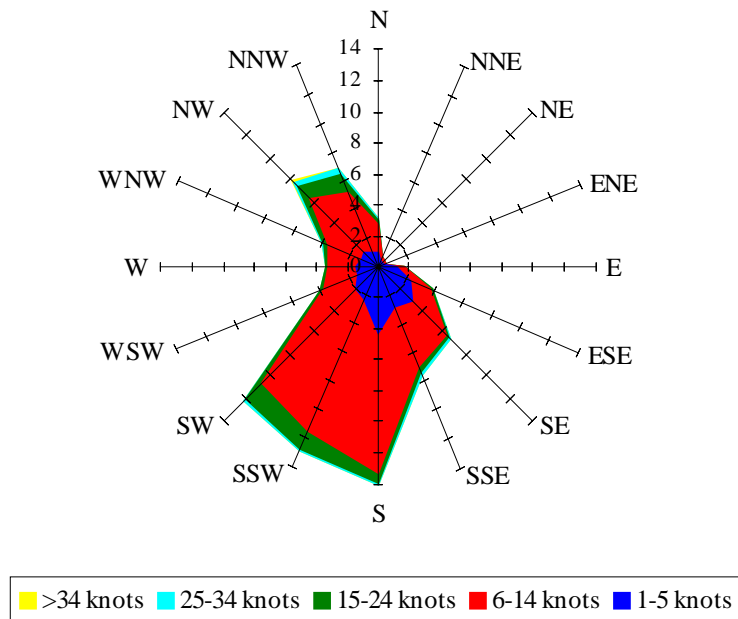
Labels of Percent Frequency on North Axis



Percent Calm = 25.01

Wind Summary - March, April, and May

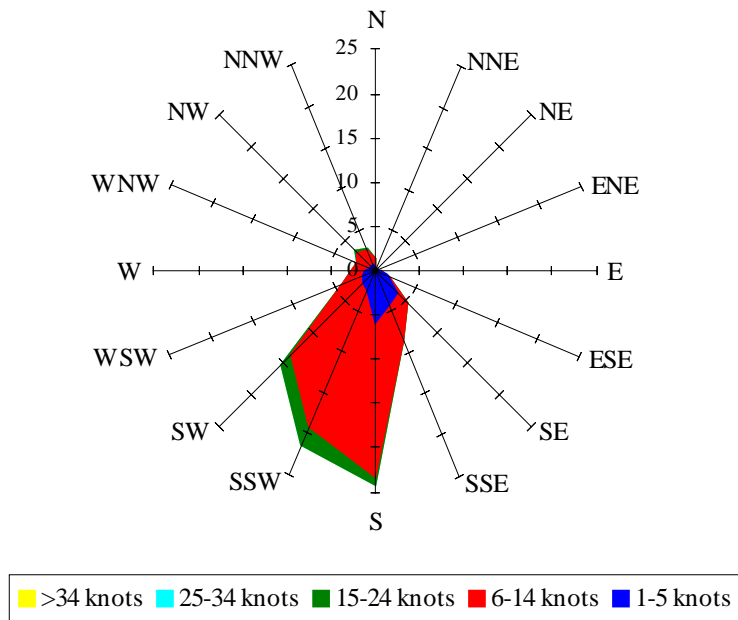
Labels of Percent Frequency on North Axis



Percent Calm = 10.97

Wind Summary - June, July, and August

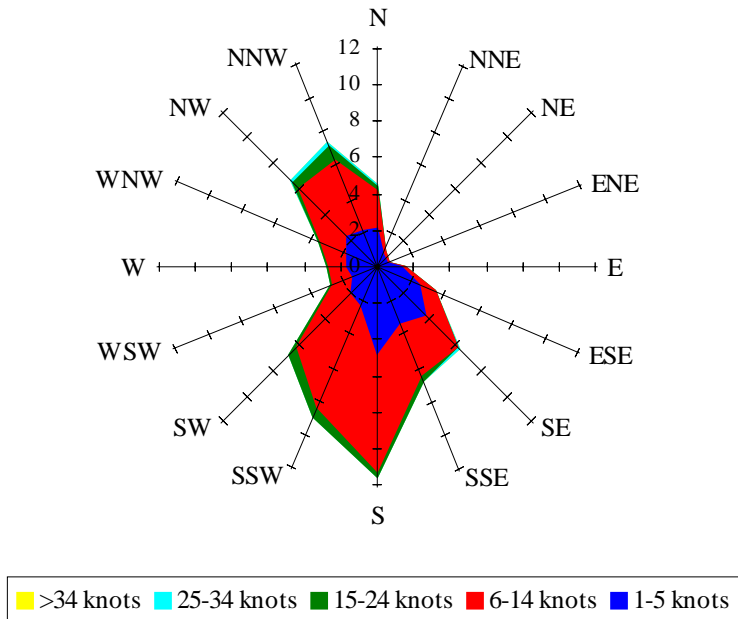
Labels of Percent Frequency on North Axis



Percent Calm = 6.47

Wind Summary - September, October, and November

Labels of Percent Frequency on North Axis



Percent Calm = 25.42