



General Information

Project Name : Marriott Ball Room AHU - St. Louis, MO
Coil Item No. : 1
Coil Tag : Cooling Coil
Date : 08/04/2015 07:47:06
Model No : CW38HJ09602400048R

Coil Construction

Coils/Bank : 2
Fin Type : 38 1.0 x 0.866 Sine
Fin Height : 24 inch
Fin'd Length : 96 inch
Rows Deep : 8
Fins/Inch : 9
Circuiting : Auto-Select
Tube Material : Copper
Tube Thick : 0.014 inch
Fin Material : Aluminum
Fin Thick : 0.0060 inch
Allow OppEnd : No

Airside

Airflow : 18000 SCFM
Altitude : 0 Feet
Ent. DB/WB : 76.0 / 65.2 °F
Cap Req'd : Btu/Hr
LDB/LWB Req'd : 50.4 / 50.4 °F

Fluid Side

Fluid : Water
Ent Fluid Temp : 42 °F
Lvg FLuid Temp : 56 °F
Fluid Flow Rate : GPM

Coil Performance

Model No. : CW38HJ09602400048R
Rows / FPI : 8 / 9
Circuiting : Double
Total Cap : 775,219 Btu/Hr
Sens Cap : 506,634 Btu/Hr
Lvg DB/WB : 50.0 / 50.0 °F
Face Velocity : 562.5 SFPM
Standard APD : 0.97 in. w.c.
Lvg Fluid : 55.3 °F
Fluid Flow : 114.5 GPM
Fluid PD : 8.38 ft H2O
Fluid Velocity : 3.66 FPS
Conn Size : (1) 2.50"
Dry Weight : 263 Lbs

Additional Construction Notes

Coil Coating : None
Casing Mat'l : 304 Stainless Steel
Casing Type : Flanged
Conn. Mat'l : Copper
Conn. Type : SWT

Special Notes:

Coil Rated in Conformance with ARI Standard 410.
Coil not within ARI Certified Directory.
-A face velocity greater than 550 FPM may cause water carryover.

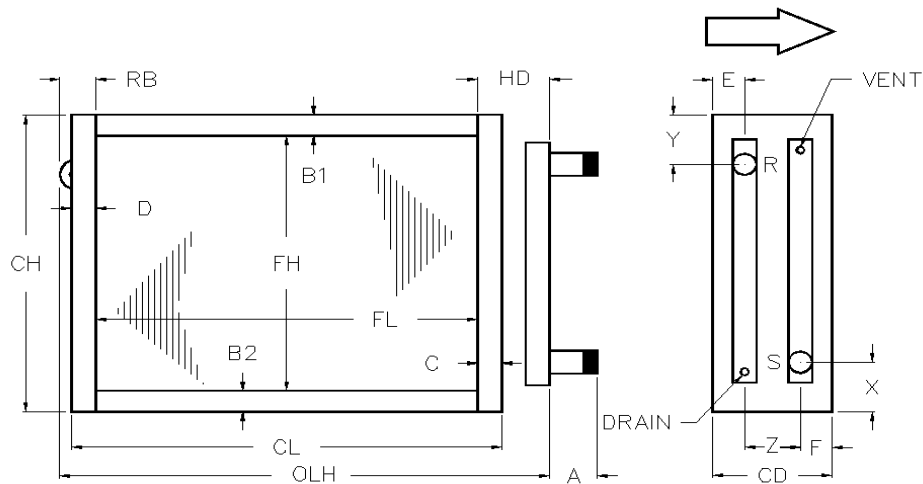
General Information

Project Name : Marriott Ball Room AHU - St. Louis, MO
 Coil Item No. : 1
 Coil Tag : Cooling Coil
 Date : 08/04/2015 07:47:06
 Model No : CW38HJ09602400048R

Coil Construction

Fin Type	: 38 1.0 x 0.866 Sine	Coil Coating	: None
Rows	: 8	Casing Mat'l	: 304 Stainless Steel
FPI	: 9	Casing Type	: Flanged
Tube Material	: Copper	Connections	: Copper SWT
Tube Thick	: 0.014 inch	Circuiting	: Double
Fin Material	: Aluminum		
Fin Thick	: 0.0060 inch		

Coil Dimensions



FH	FL	CH	CL	CD	HD	OLH	A	X	F
24.00	96.00	27.00	99.00	12.00	5.63	103.13	3.50	3.00	2.97
Y	E	C	D	B1	B2	RB	Z	Supply	Return
3.00	2.97	1.50	1.50	1.50	1.50	1.25	6.06	2.50	2.50
Drawing									
WTRRHSTD									

Special Notes:



General Information

Project Name : Marriott Ball Room AHU - St. Louis, MO
Coil Item No. : 1
Coil Tag : Cooling Coil
Date : 08/04/2015 07:47:06
Model No : CW38HJ09602400048R

Coil Construction

Fin Type	: 38 1.0 x 0.866 Sine	Coil Coating	: None
Tube Material	: Copper	Casing Mat'l	: 304 Stainless Steel
Tube Thick	: 0.014 inch	Casing Type	: Flanged
Fin Material	: Aluminum	Connections	: (1) 2.50" Copper SWT
Fin Thick	: 0.0060 inch		
Fin Height	: 24		
Fin Length	: 96		

Itemized Pricing (Net) - PER COIL

Base Multiplier		1.000
Adder Multiplier		1.000
Base Price	\$	4,163.00
Tube Add	\$	0.00
Fin Add	\$	0.00
Casing Add	\$	537.60
Connection Add	\$	0.00
Total Per Coil	\$	4,700.60

Special Notes: