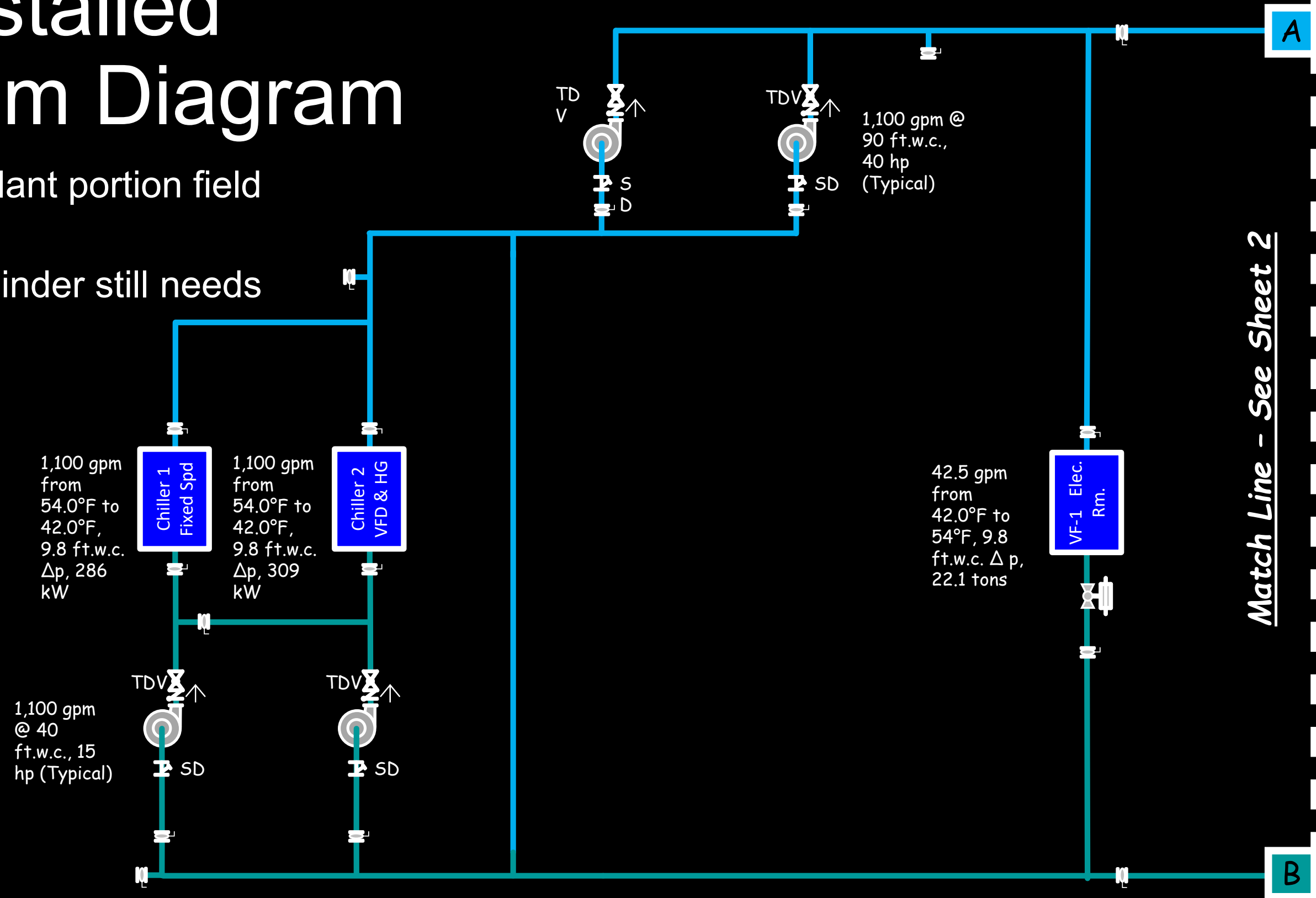
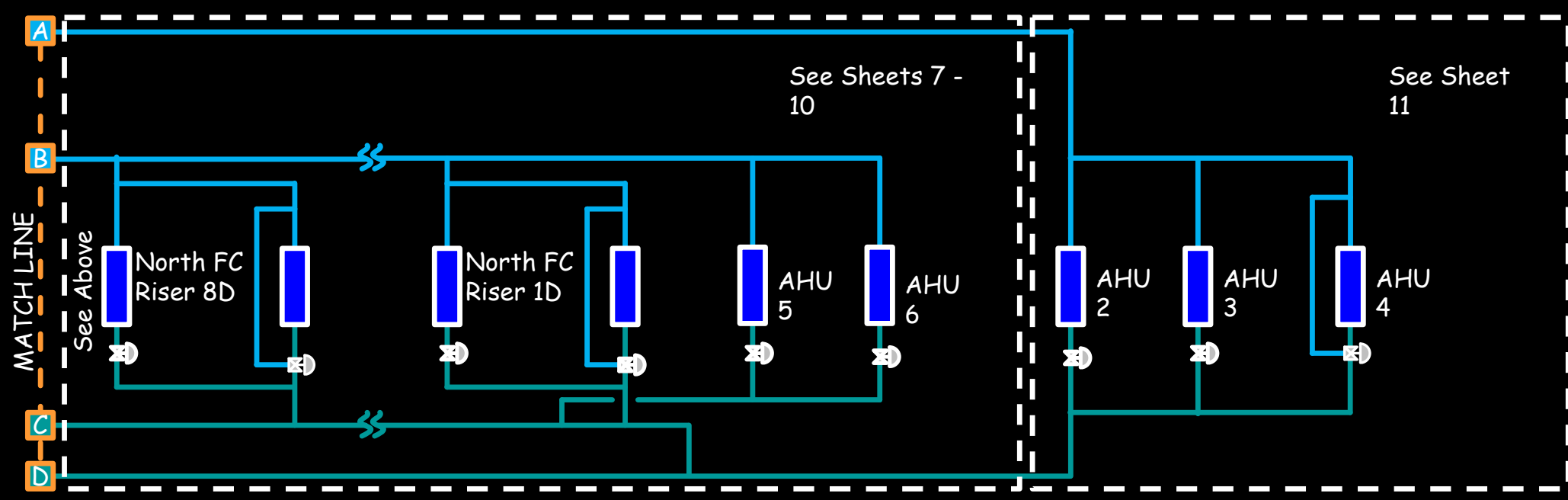
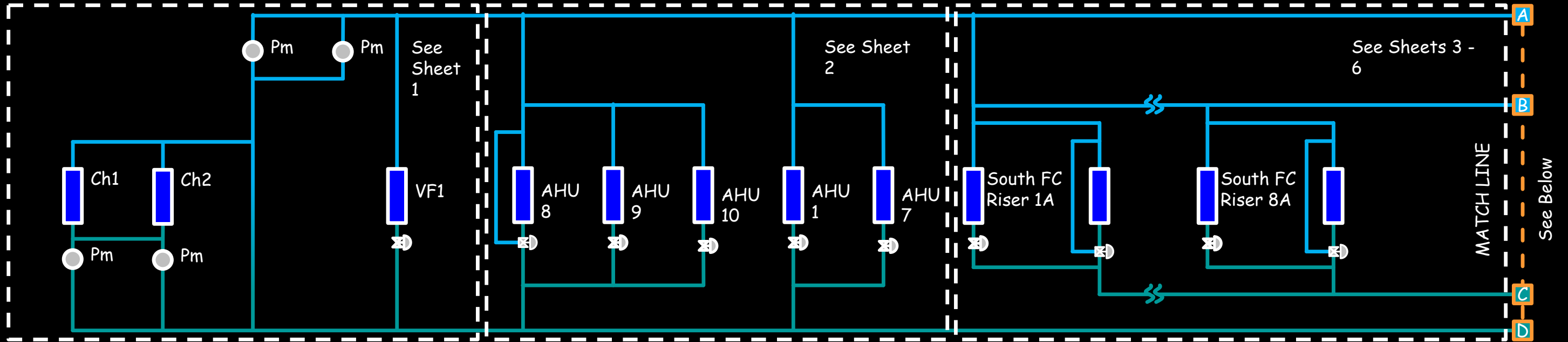


As Installed System Diagram

- Central Plant portion field verified
- The remainder still needs verified



The Simplified As Installed System Diagram



Hijend Hotel CHW System Diagram
Sheet 2

Match Line - See Sheet 1

Match Line - See Sheet 3

43.9 gpm
from
42.0°F to
54°F, 7.8
ft.w.c. Δp ,
21.9 tons;
bypass
balanced
for 5 gpm
in full
bypass.

AHU8
Cafe

73.7 gpm
from
42.0°F to
54°F, 9.3
ft.w.c. Δp ,
36.9 tons

AHU9
Rest/Lng

157.2 gpm
from
42.0°F to
54°F, 9.6
ft.w.c. Δp ,
78.6 tons

AHU10
Kitchen

141 gpm
from
42.0°F to
54°F, 8.6
ft.w.c. Δp ,
42.2 tons

AHU1
Admin/Lby

57.9 gpm
from
42.0°F to
54°F, 3.1
ft.w.c. Δp ,
29 tons

AHU7
Laundry

A

C

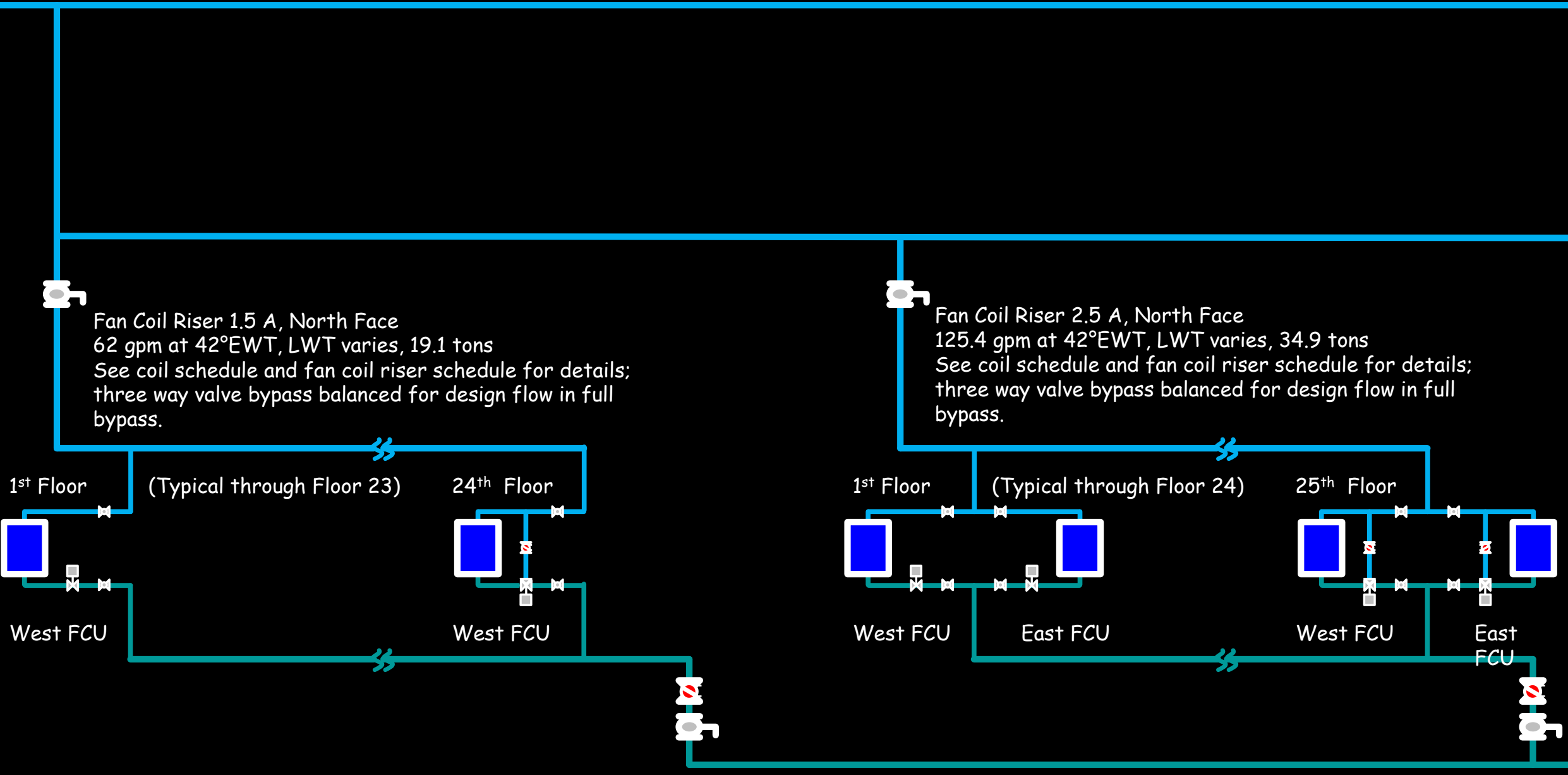
B

D

Hijend Hotel CHW System Diagram
Sheet 3

Match Line - See Sheet 2

Match Line - See Sheet 4



D

H

C

F

F

G

Hijend Hotel CHW System Diagram
Sheet 4

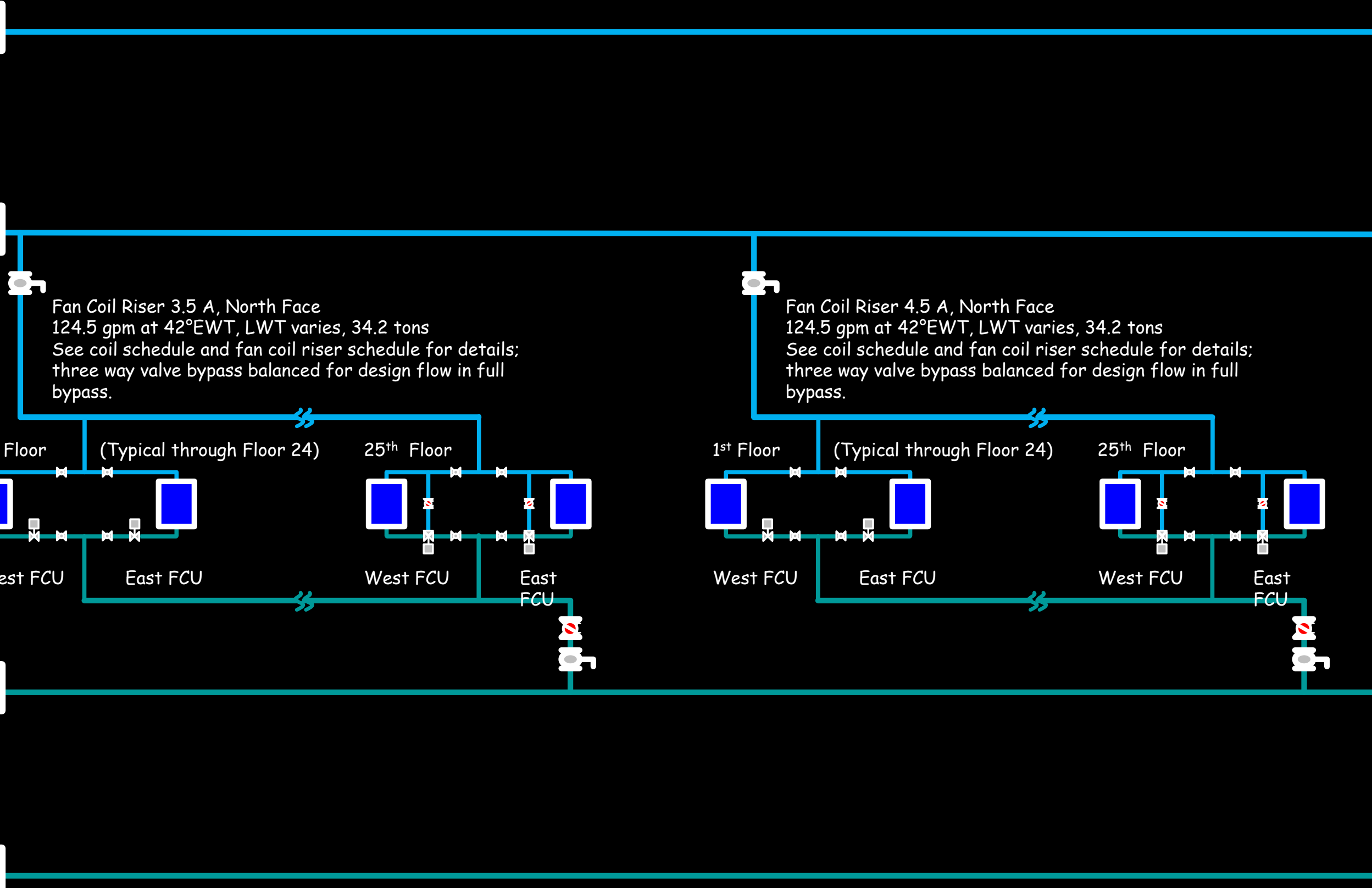
Match Line - See Sheet 3

E

F

G

H



Match Line - See Sheet 5

I

J

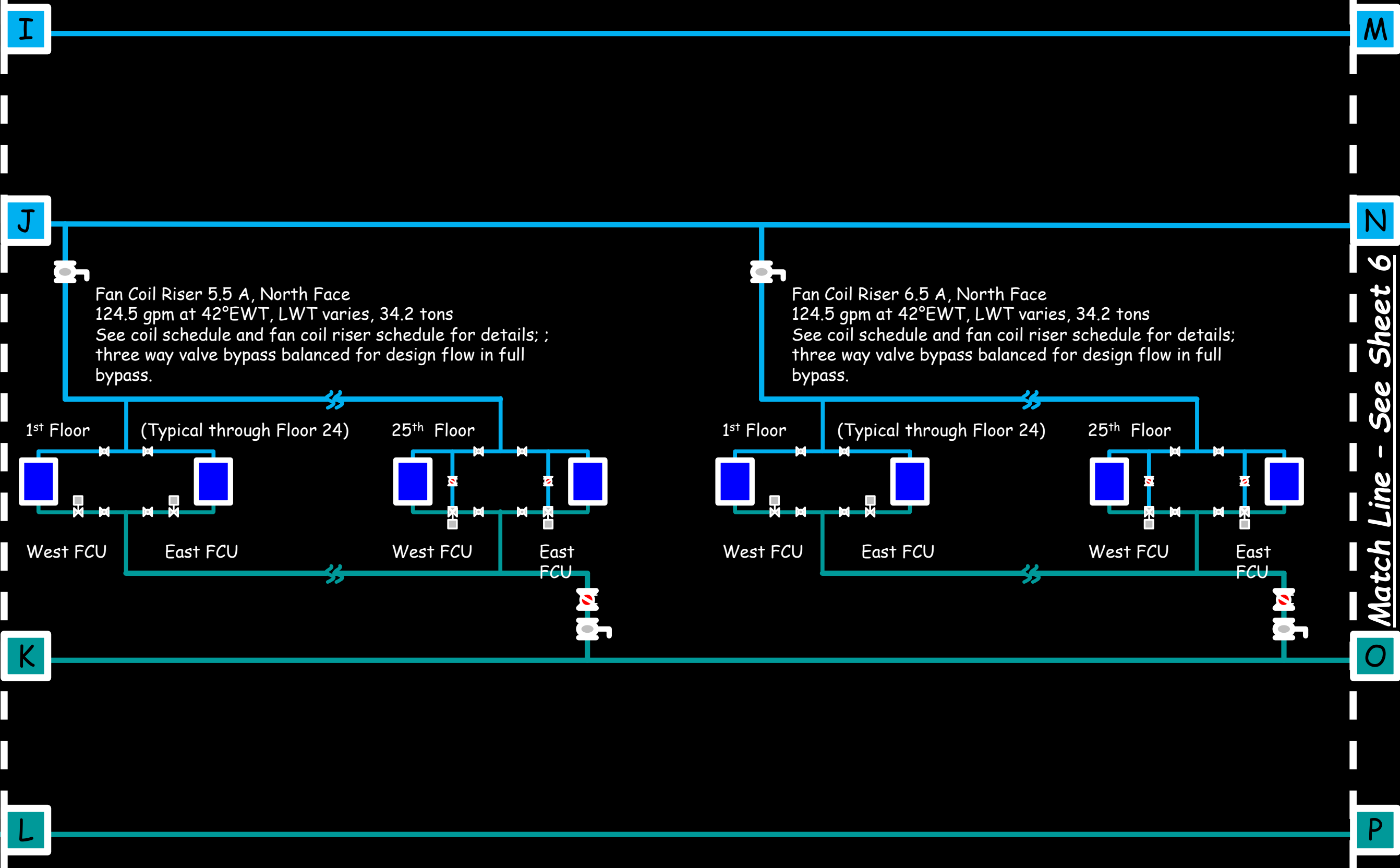
K

L

Hijend Hotel CHW System Diagram
Sheet 5

Match Line - See Sheet 4

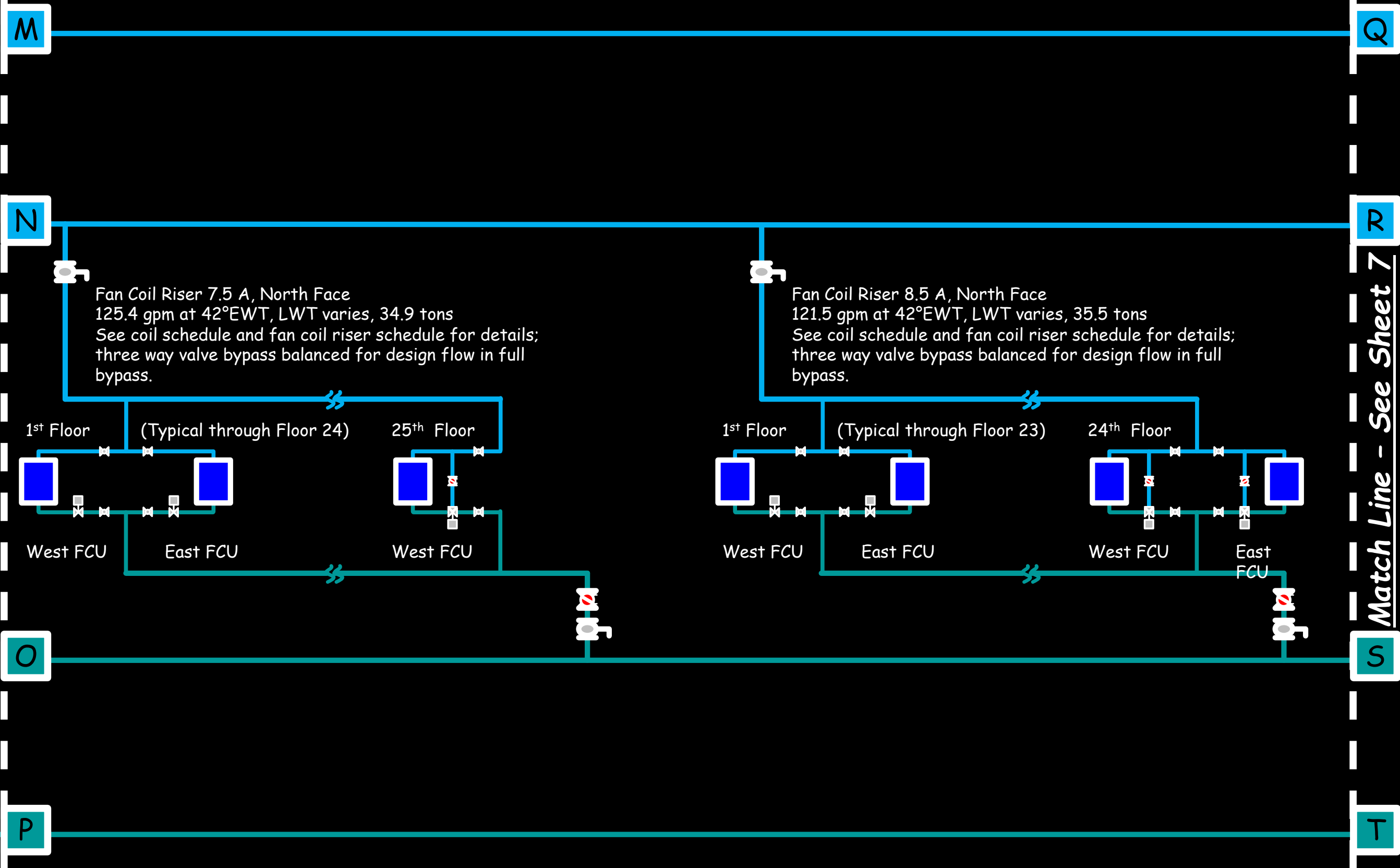
Match Line - See Sheet 6



Hijend Hotel CHW System Diagram
Sheet 6

Match Line - See Sheet 5

Match Line - See Sheet 7



Hijend Hotel CHW System Diagram
Sheet 7

Match Line - See Sheet 6

Match Line - See Sheet 8

Q

U

R

V

S

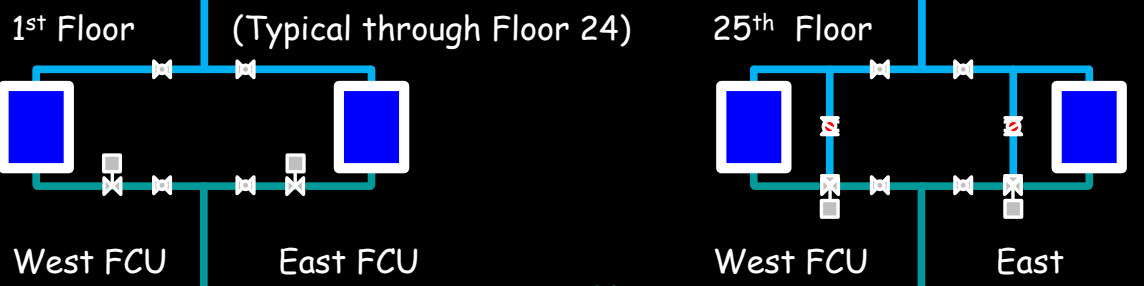
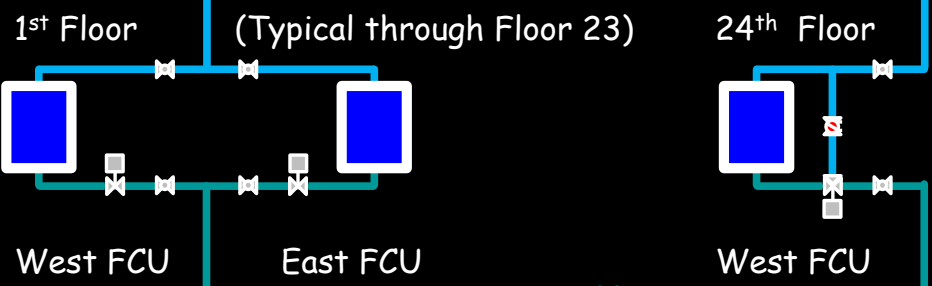
W

T

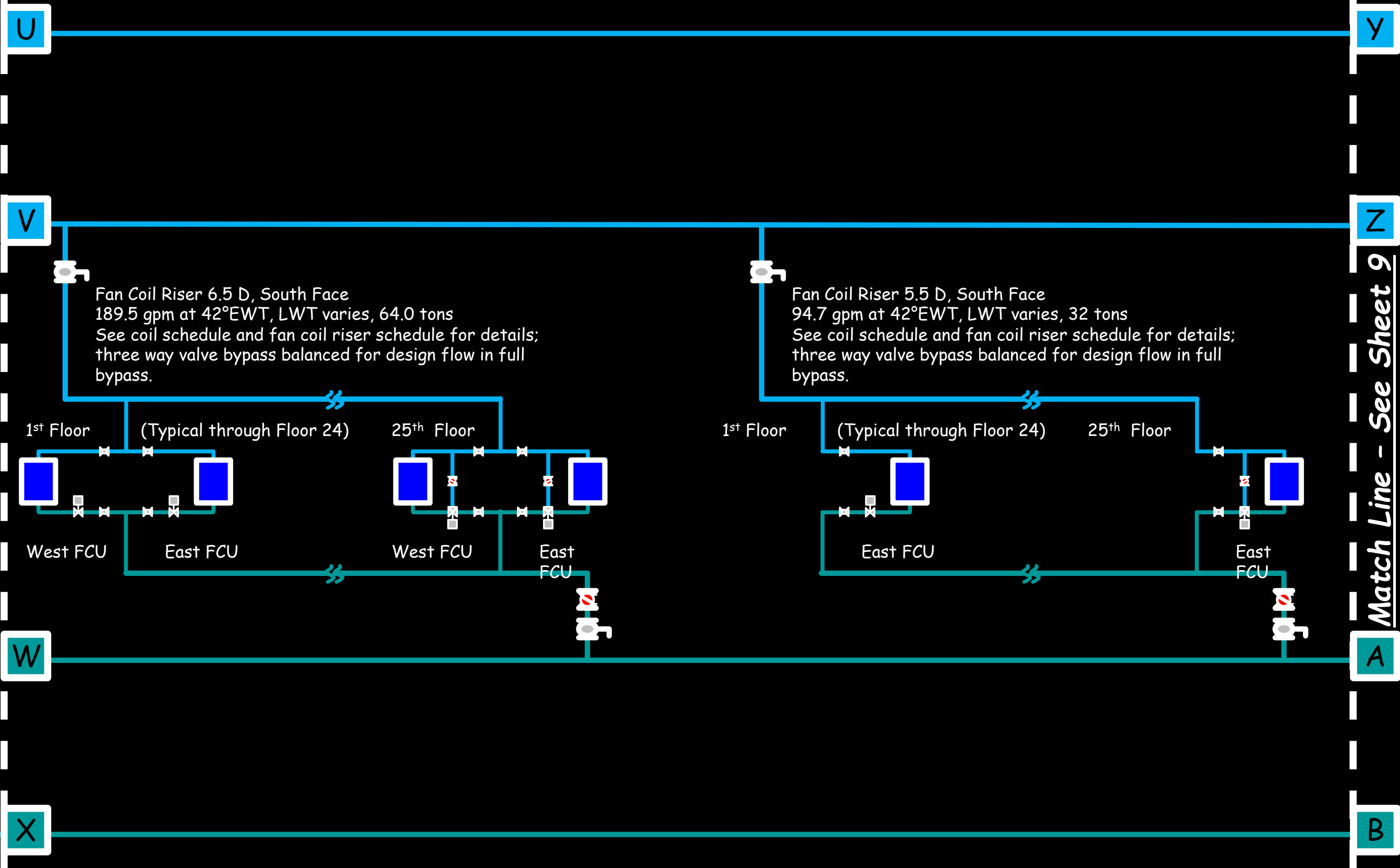
X

Fan Coil Riser 8.5 D, South Face
90.6 gpm at 42°EWT, LWT varies, 30.6 tons
See coil schedule and fan coil riser schedule for details;
three way valve bypass balanced for design flow in full
bypass.

Fan Coil Riser 7.5 D, South Face
187.6 gpm at 42°EWT, LWT varies, 63.4 tons
See coil schedule and fan coil riser schedule for details;
three way valve bypass balanced for design flow in full
bypass.



Hijend Hotel CHW System Diagram
Sheet 8



Match Line - See Sheet 7

Match Line - See Sheet 9

U

Y

V

Z

W

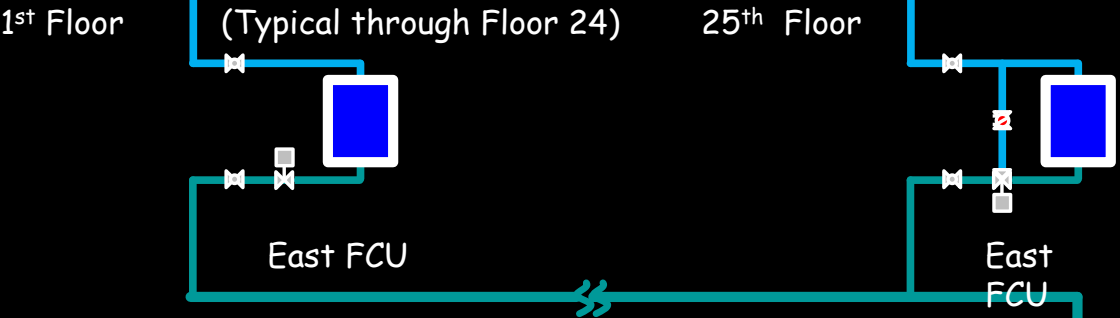
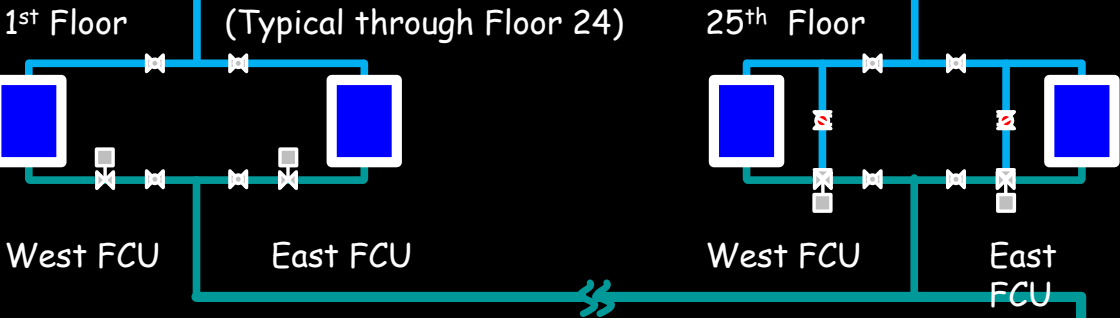
A

X

B

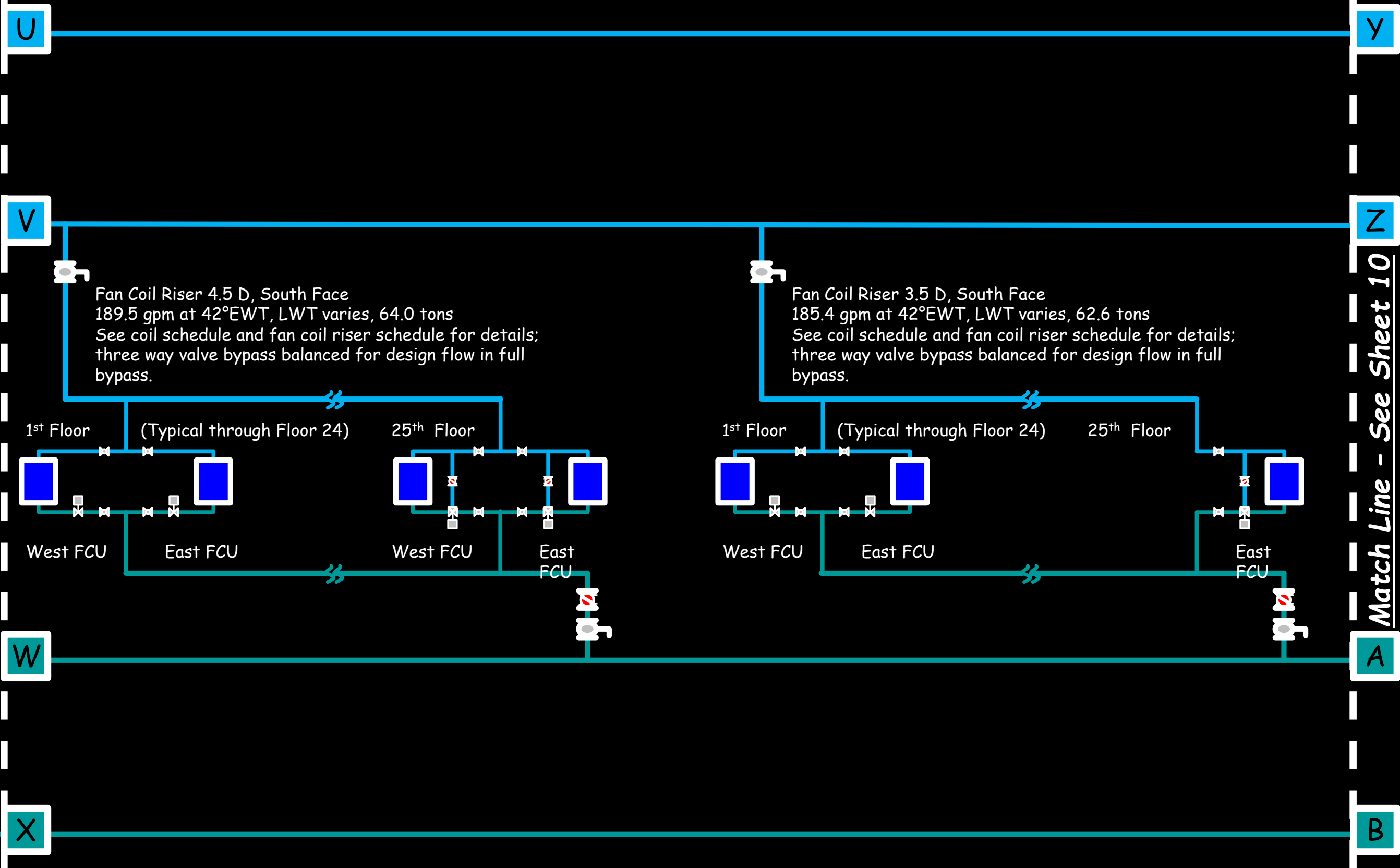
Fan Coil Riser 6.5 D, South Face
189.5 gpm at 42°EWT, LWT varies, 64.0 tons
See coil schedule and fan coil riser schedule for details;
three way valve bypass balanced for design flow in full
bypass.

Fan Coil Riser 5.5 D, South Face
94.7 gpm at 42°EWT, LWT varies, 32 tons
See coil schedule and fan coil riser schedule for details;
three way valve bypass balanced for design flow in full
bypass.



Hijend Hotel CHW System Diagram
Sheet 9

Match Line - See Sheet 8

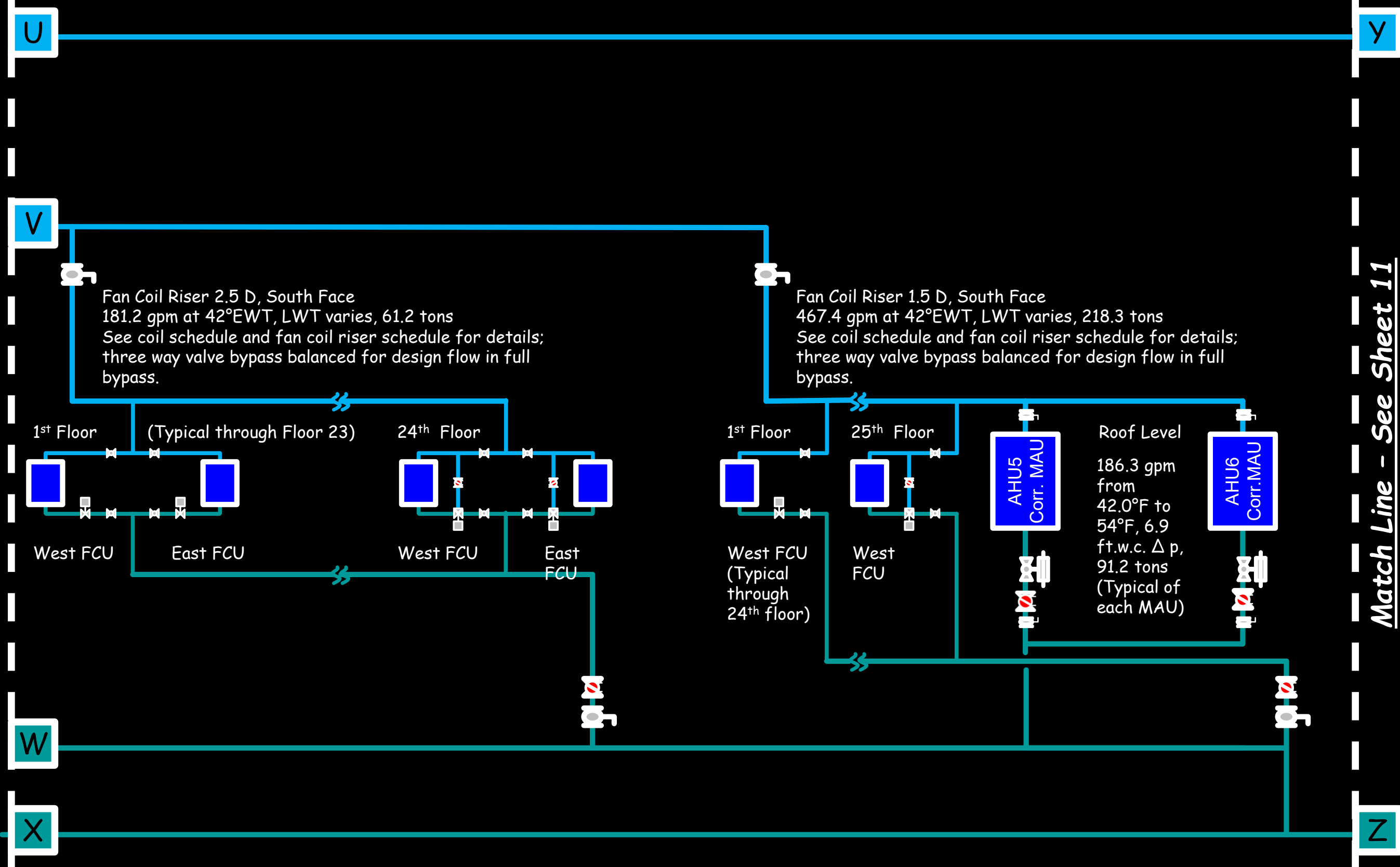


Match Line - See Sheet 10

Hijend Hotel CHW System Diagram
Sheet 10

Match Line - See Sheet 9

Match Line - See Sheet 11



Match Line - See Sheet 10

y

z

148.7 gpm
from
42.0°F to
54°F, 11
ft.w.c. Δp ,
74.4 tons

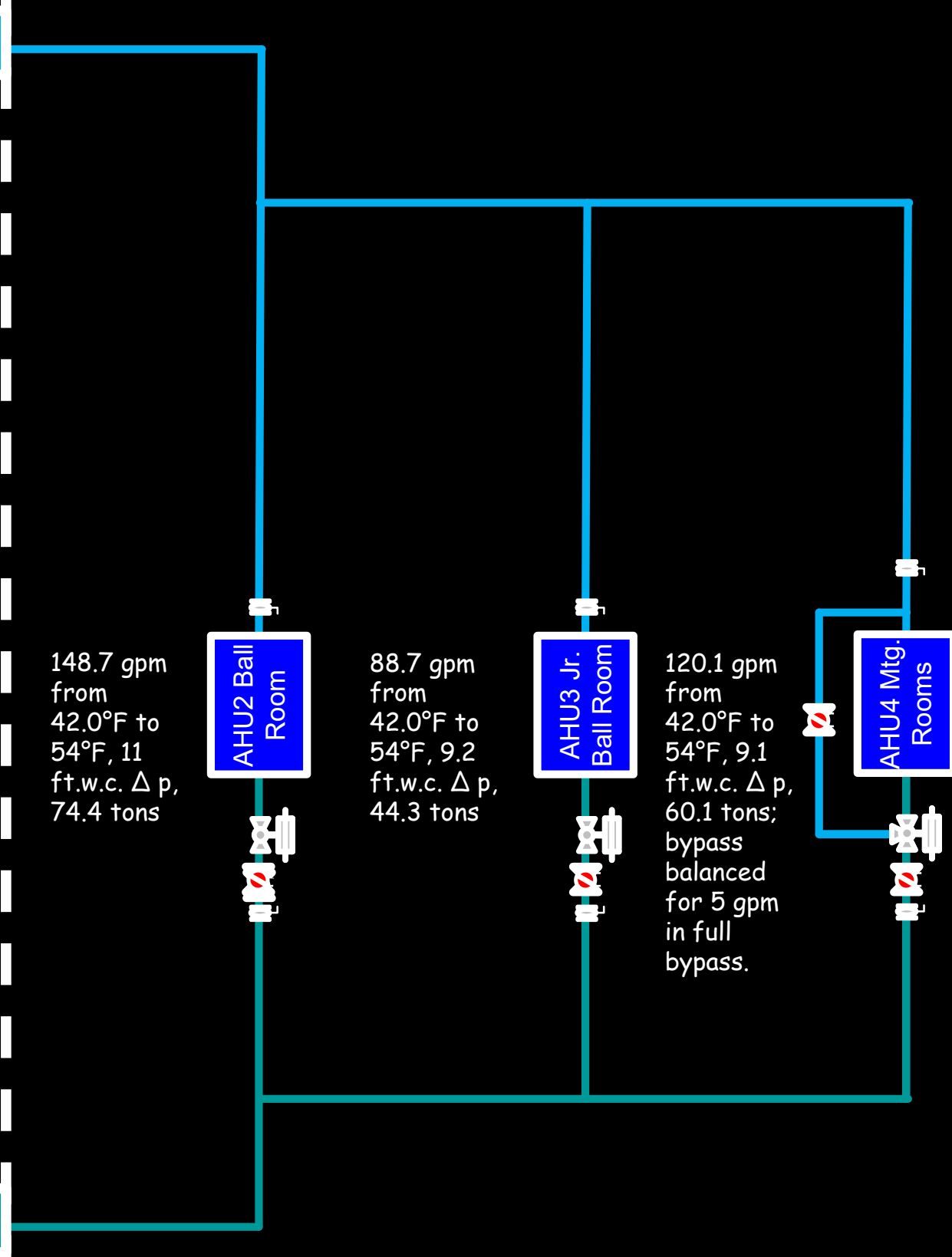
AHU2 Ball
Room

88.7 gpm
from
42.0°F to
54°F, 9.2
ft.w.c. Δp ,
44.3 tons

AHU3 Jr.
Ball Room

120.1 gpm
from
42.0°F to
54°F, 9.1
ft.w.c. Δp ,
60.1 tons;
bypass
balanced
for 5 gpm
in full
bypass.

AHU4 Mtg.
Rooms



Hijend Hotel CHW System Diagram
Sheet 2

Match Line - See Sheet 1

Match Line - See Sheet 3

43.9 gpm
from
42.0°F to
54°F, 7.8
ft.w.c. Δp ,
21.9 tons;
bypass
balanced
for 5 gpm
in full
bypass.

AHU8
Cafe

73.7 gpm
from
42.0°F to
54°F, 9.3
ft.w.c. Δp ,
36.9 tons

AHU9
Rest/Lng

157.2 gpm
from
42.0°F to
54°F, 9.6
ft.w.c. Δp ,
78.6 tons

AHU10
Kitchen

141 gpm
from
42.0°F to
54°F, 8.6
ft.w.c. Δp ,
42.2 tons

AHU1
Admin/Lby

57.9 gpm
from
42.0°F to
54°F, 3.1
ft.w.c. Δp ,
29 tons

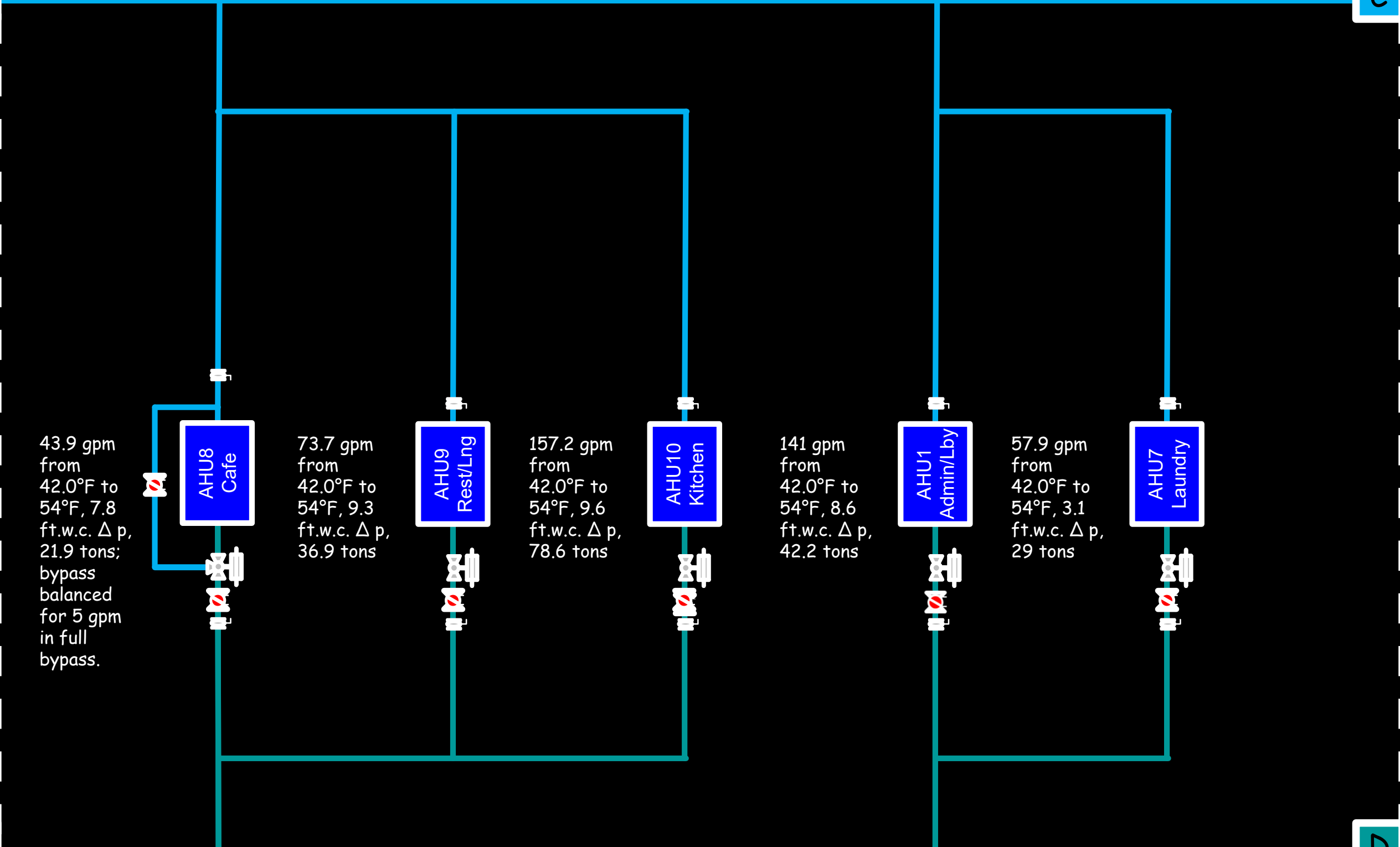
AHU7
Laundry

A

C

B

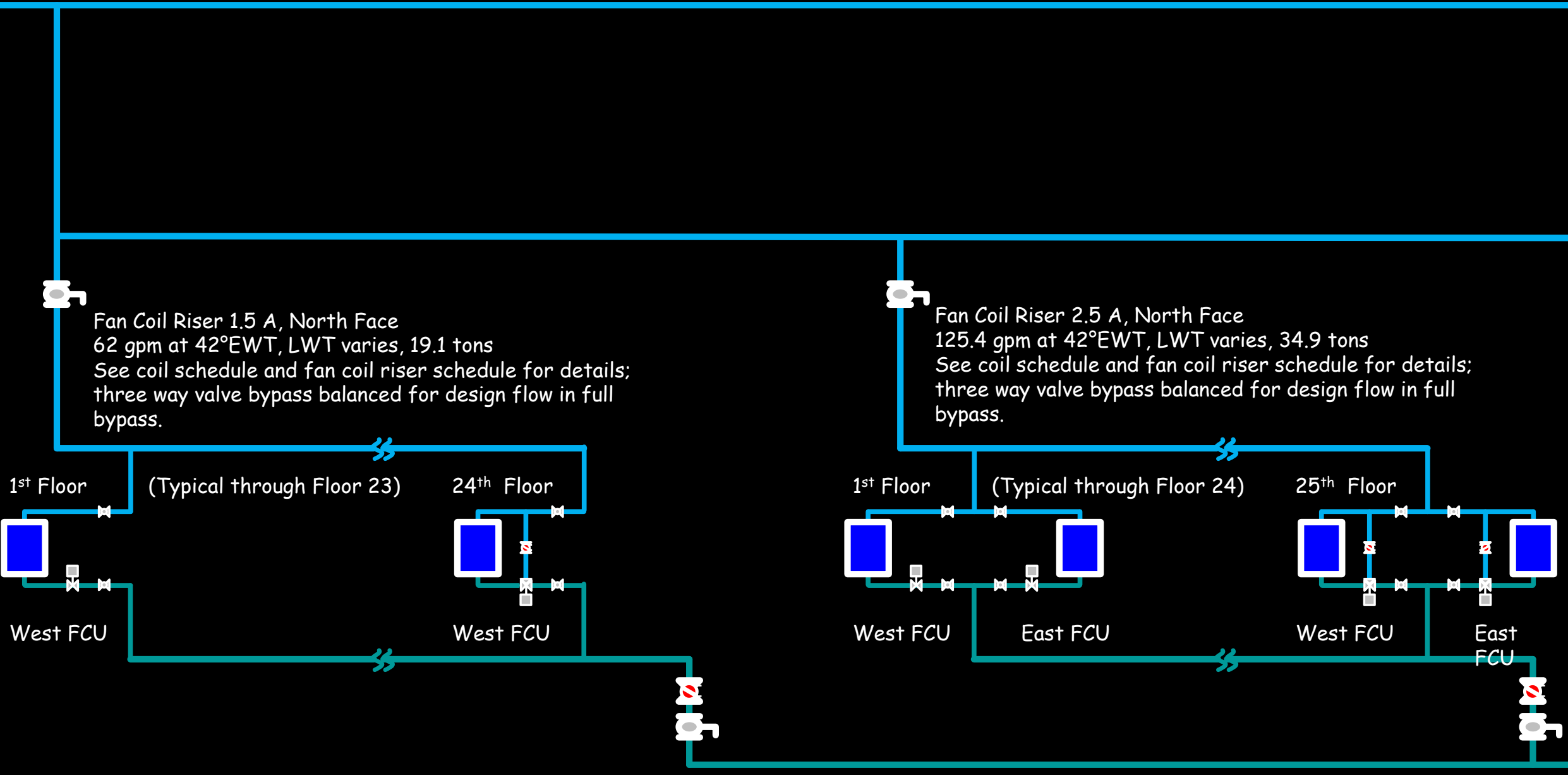
D



Hijend Hotel CHW System Diagram
Sheet 3

Match Line - See Sheet 2

Match Line - See Sheet 4



D

H

C

F

F

G

Hijend Hotel CHW System Diagram
Sheet 4

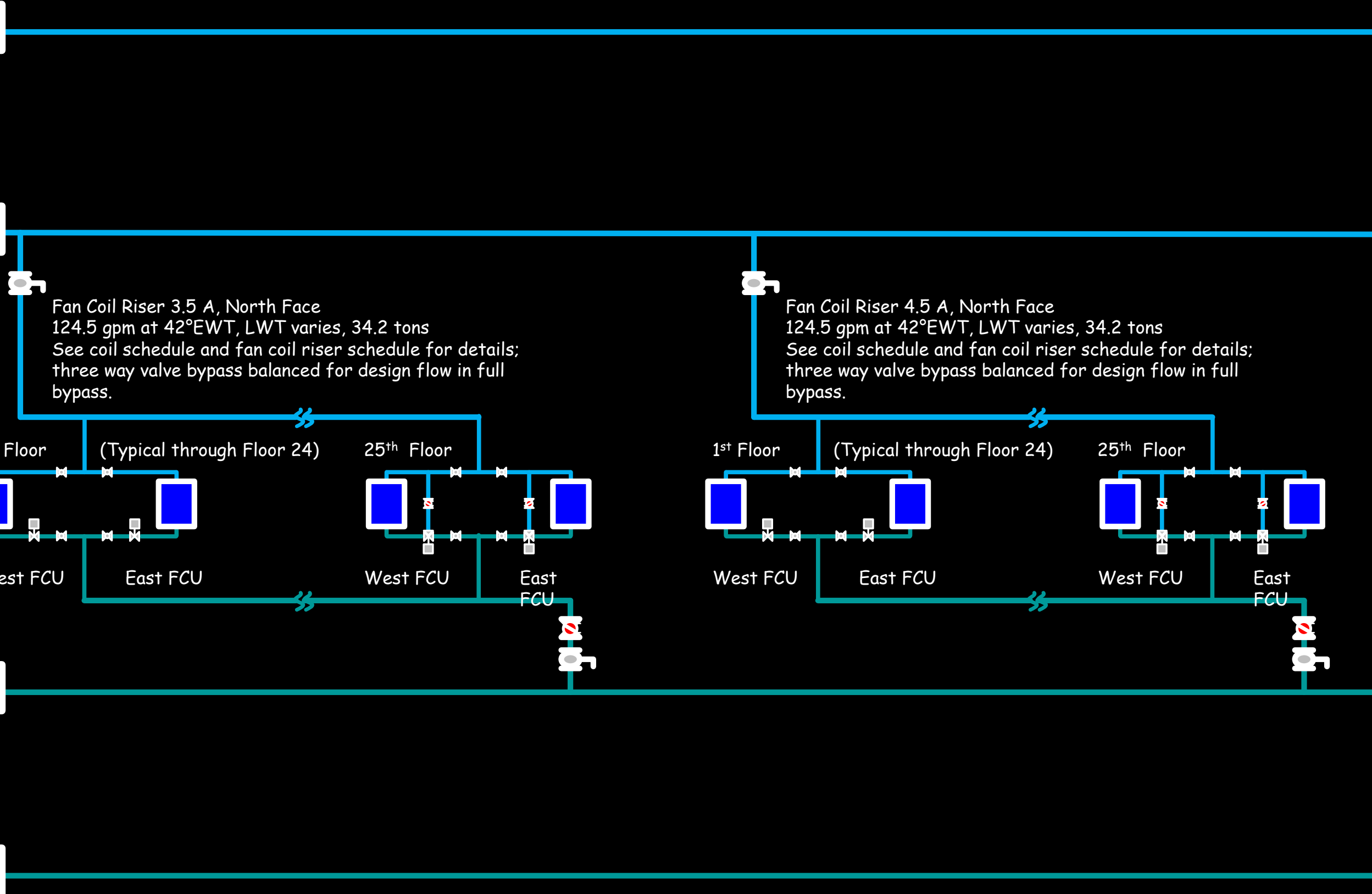
Match Line - See Sheet 3

E

F

G

H



I

J

K

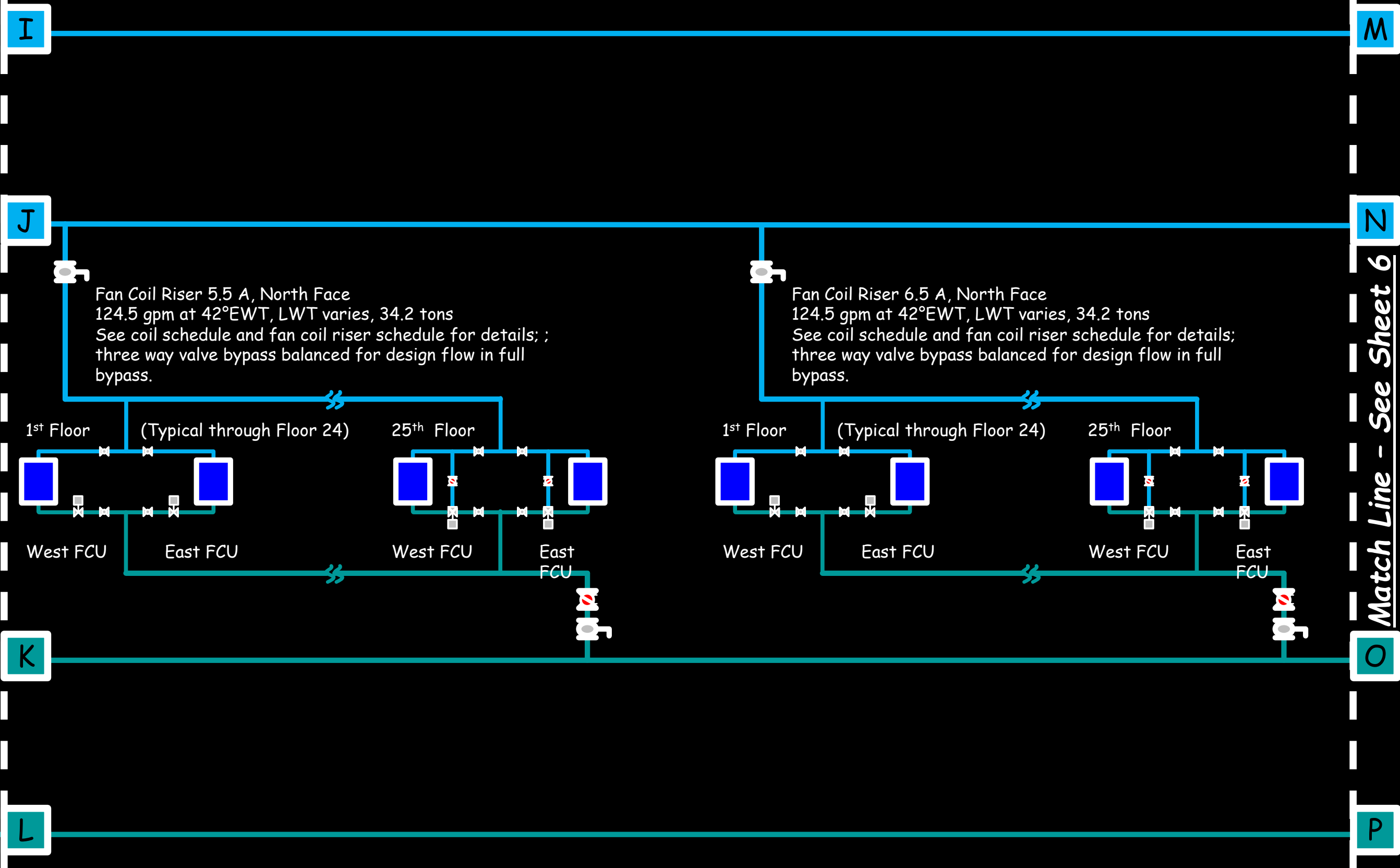
L

Match Line - See Sheet 5

Hijend Hotel CHW System Diagram
Sheet 5

Match Line - See Sheet 4

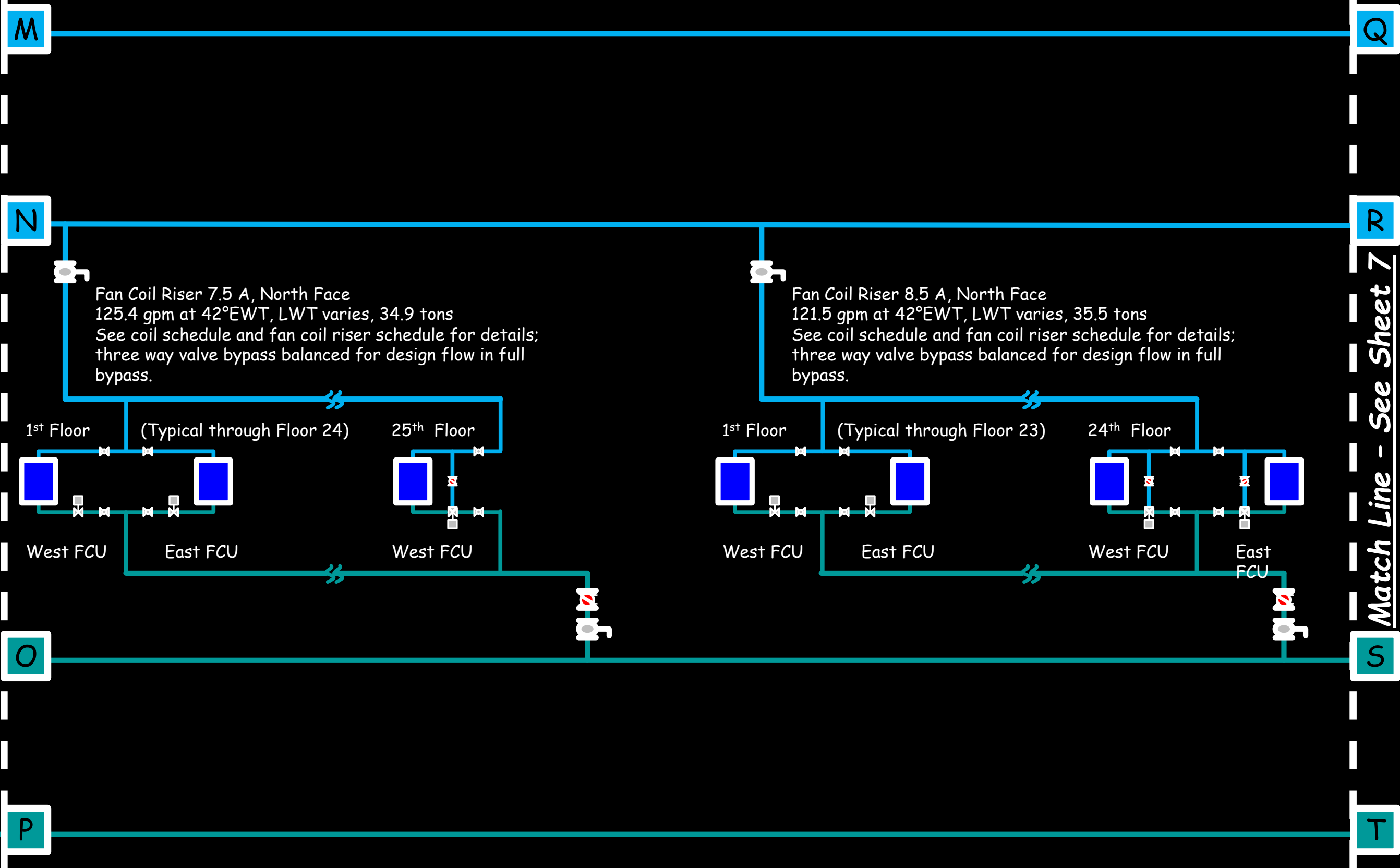
Match Line - See Sheet 6



Hijend Hotel CHW System Diagram
Sheet 6

Match Line - See Sheet 5

Match Line - See Sheet 7



Hijend Hotel CHW System Diagram
Sheet 7

Match Line - See Sheet 6

Match Line - See Sheet 8

Q

U

R

V

S

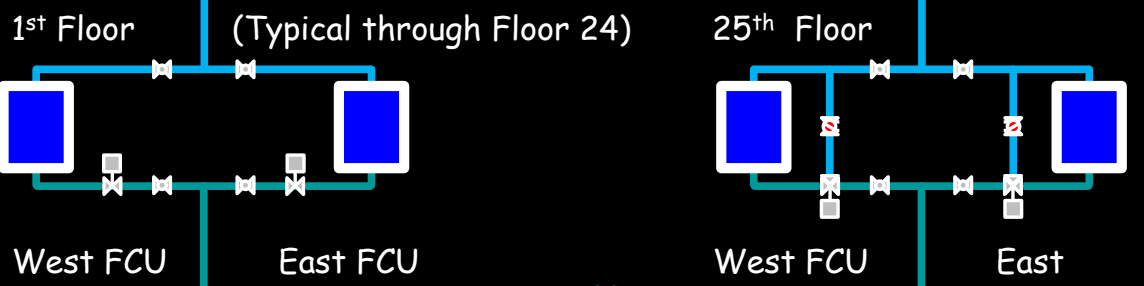
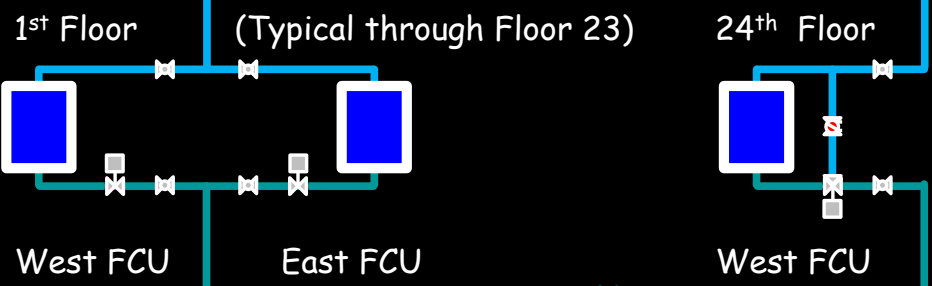
W

T

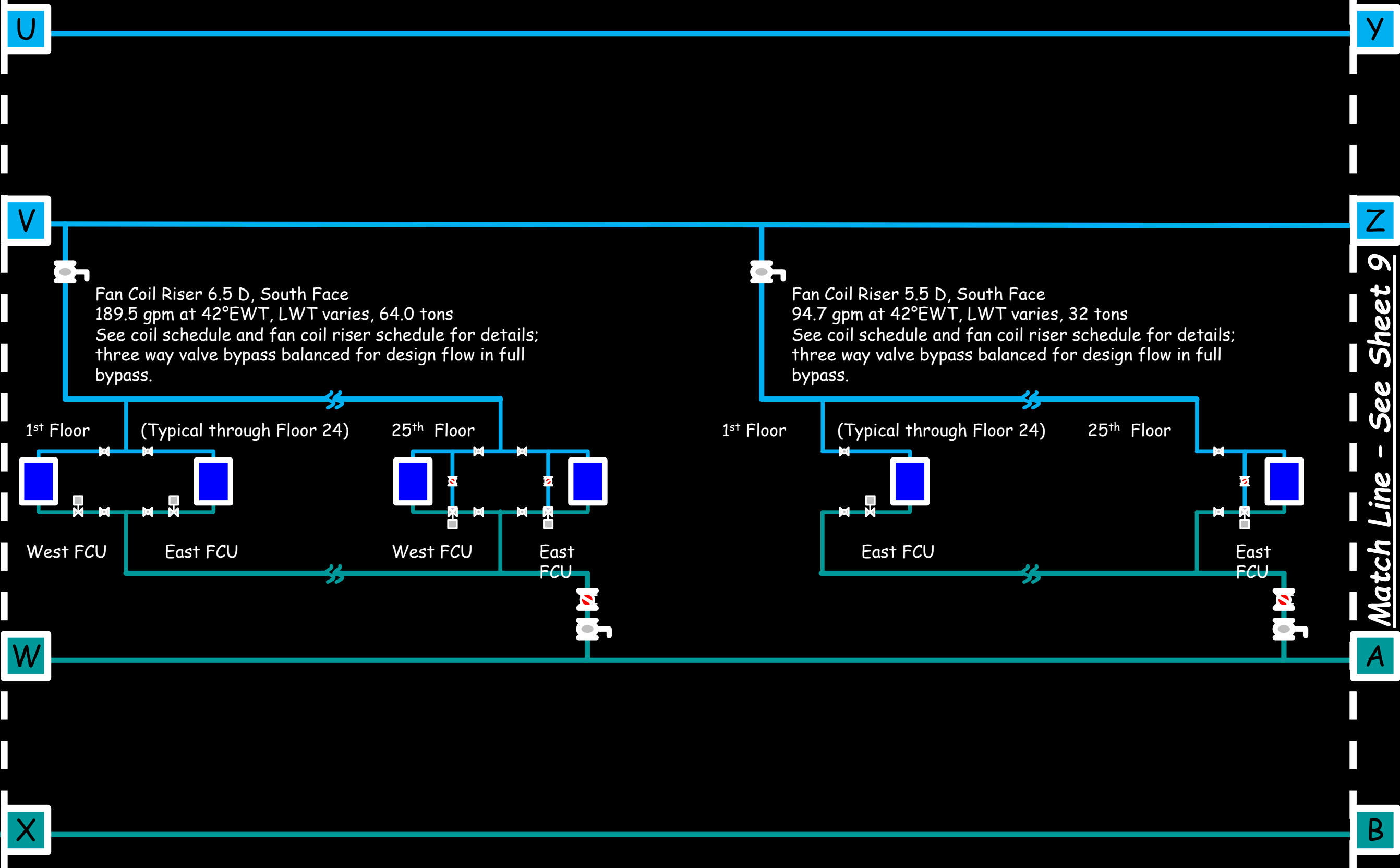
X

Fan Coil Riser 8.5 D, South Face
90.6 gpm at 42°EWT, LWT varies, 30.6 tons
See coil schedule and fan coil riser schedule for details;
three way valve bypass balanced for design flow in full
bypass.

Fan Coil Riser 7.5 D, South Face
187.6 gpm at 42°EWT, LWT varies, 63.4 tons
See coil schedule and fan coil riser schedule for details;
three way valve bypass balanced for design flow in full
bypass.



Hijend Hotel CHW System Diagram
Sheet 8



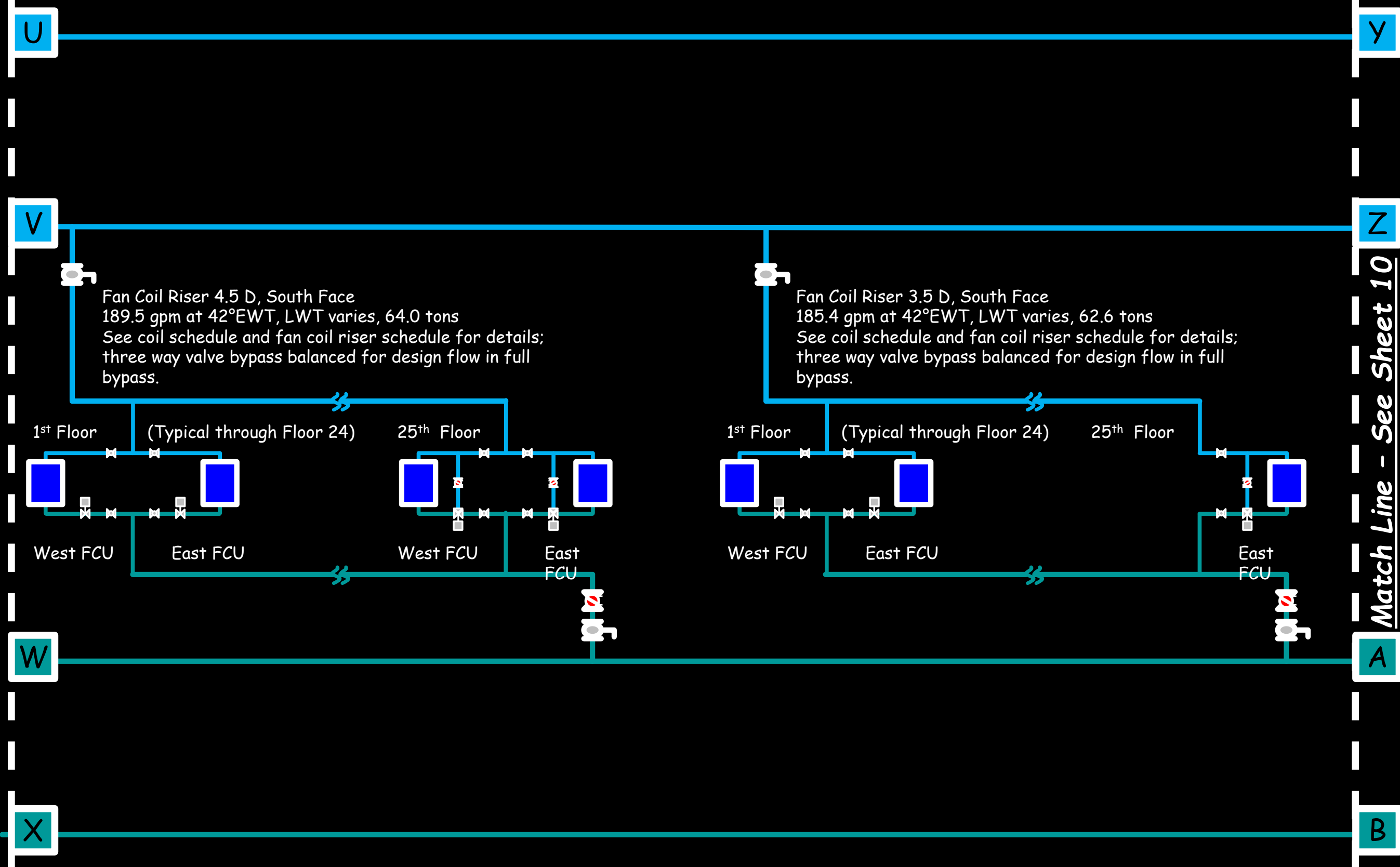
Match Line - See Sheet 7

Match Line - See Sheet 9

Hijend Hotel CHW System Diagram
Sheet 9

Match Line - See Sheet 8

Match Line - See Sheet 10



U

V

W

X

Y

Z

A

B

Fan Coil Riser 4.5 D, South Face
189.5 gpm at 42°EWT, LWT varies, 64.0 tons
See coil schedule and fan coil riser schedule for details;
three way valve bypass balanced for design flow in full
bypass.

Fan Coil Riser 3.5 D, South Face
185.4 gpm at 42°EWT, LWT varies, 62.6 tons
See coil schedule and fan coil riser schedule for details;
three way valve bypass balanced for design flow in full
bypass.

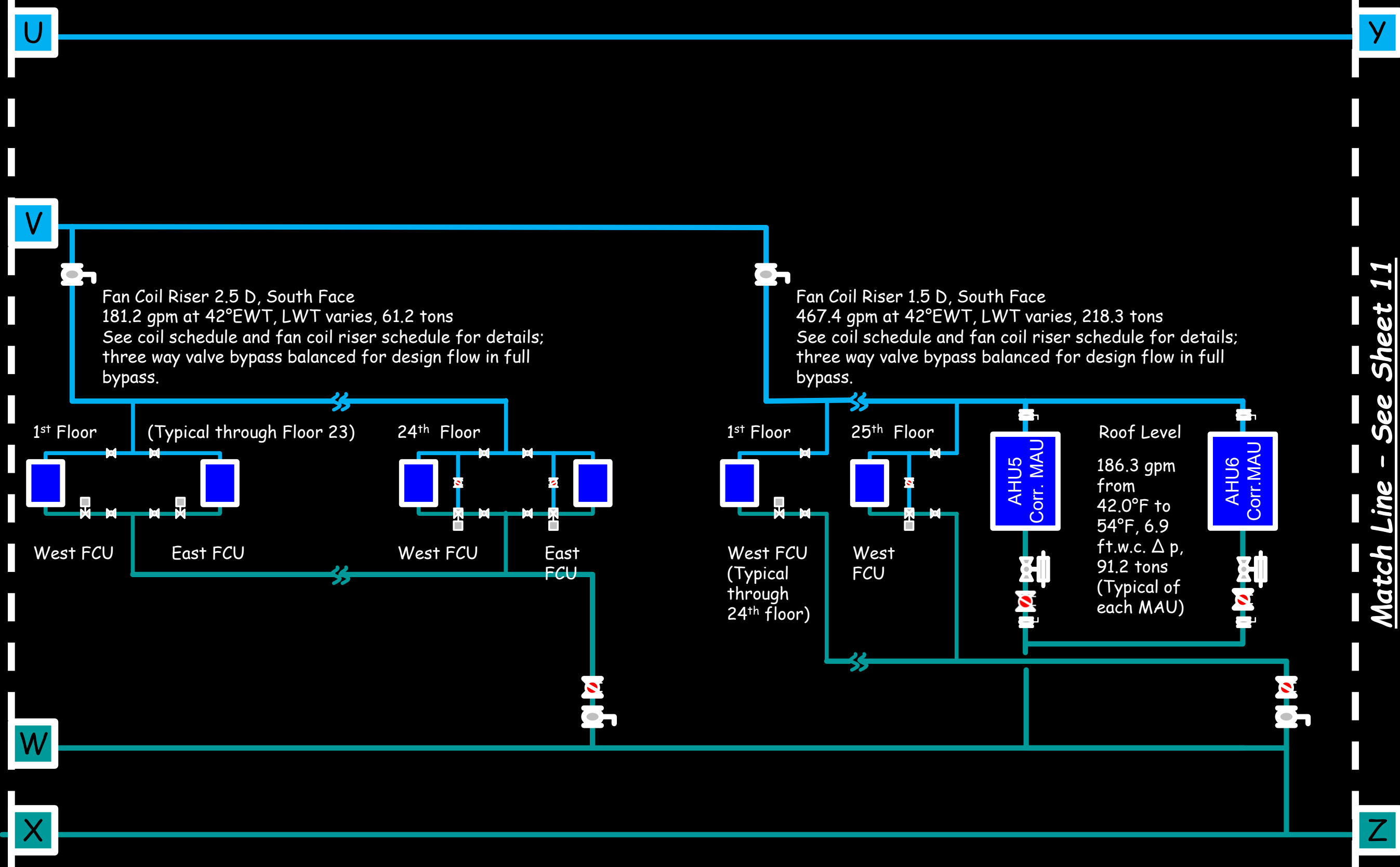
1st Floor (Typical through Floor 24) 25th Floor
West FCU East FCU West FCU East FCU

1st Floor (Typical through Floor 24) 25th Floor
West FCU East FCU West FCU East FCU

Hijend Hotel CHW System Diagram
Sheet 10

Match Line - See Sheet 9

Match Line - See Sheet 11



Match Line - See Sheet 10

y

z

148.7 gpm
from
42.0°F to
54°F, 11
ft.w.c. Δp ,
74.4 tons

AHU2 Ball
Room

88.7 gpm
from
42.0°F to
54°F, 9.2
ft.w.c. Δp ,
44.3 tons

AHU3 Jr.
Ball Room

120.1 gpm
from
42.0°F to
54°F, 9.1
ft.w.c. Δp ,
60.1 tons;
bypass
balanced
for 5 gpm
in full
bypass.

AHU4 Mtg.
Rooms

