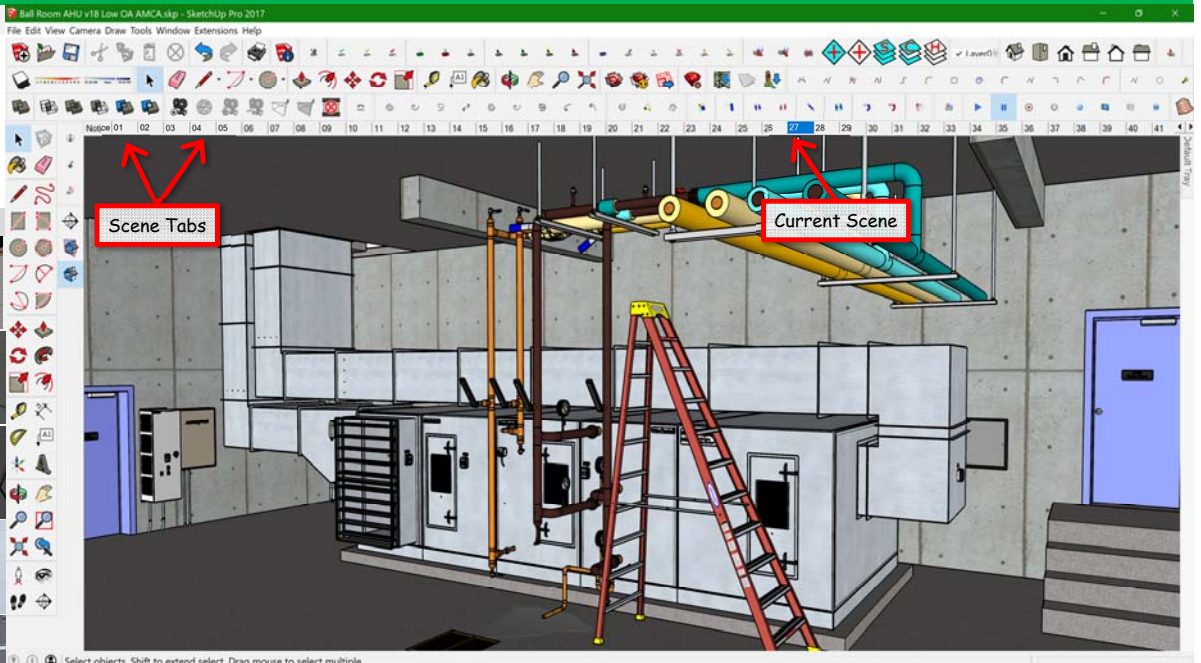


Ballroom Air Handling Unit Model Scene Guide

Version 1 (April 25, 2018)

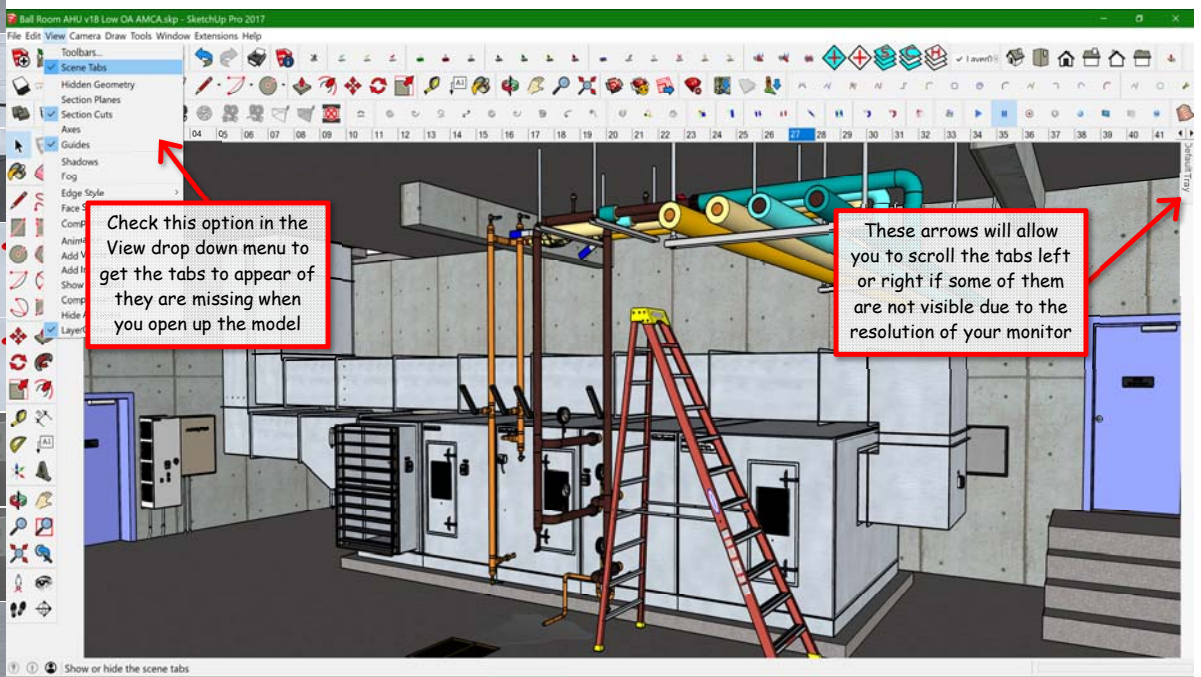
To make the scene tabs more compact in the model so more of them will display across the top of the image, I have numbered them rather than giving them descriptive labels. The list below is a kind of "cheat sheet" that will help you remember what view is associated with a

Scene Number	Scene Description	Scene Thumbnail
Notice	Copyright notice and permissions link	
1	From the stairs entering the room	
2	Looking down at the AHU discharge from the stairs	
3	Looking at the discharge temperature	
4	Floor drain area	
5	Discharge sensor sees fan heat	
6	Pipe thermometer close-up	
7	Looking at OA dampers through window	
8	Looking at OA damper through open RA damper	
9	Looking at OA sensor and dampers	
10	Reading OA sensor	
11	Opening iPhone app	
12	Checking OA enthalpy with iPhone app	
13	Checking space enthalpy with iPhone app	
14	Noticing VFD and control panel	
15	Looking at VFD control panel	
16	Looking at discharge arrangement	
17	Looking through window at the back of the fan	
18	Looking through window at the front of the fan, ladder moved	
19	Looking through the ceiling with the ceiling still there	
20	Looking through the ceiling	
21	Ballroom ceiling plenum	
22	Ballroom no ceiling	
23	Distribution system from below	
24	Overview from outside	
25	Looking down OA and RA shafts from above	
26	Louvers	
27	AHU Overview	
28	Looking up RA shaft from the back corner of the equipment room	



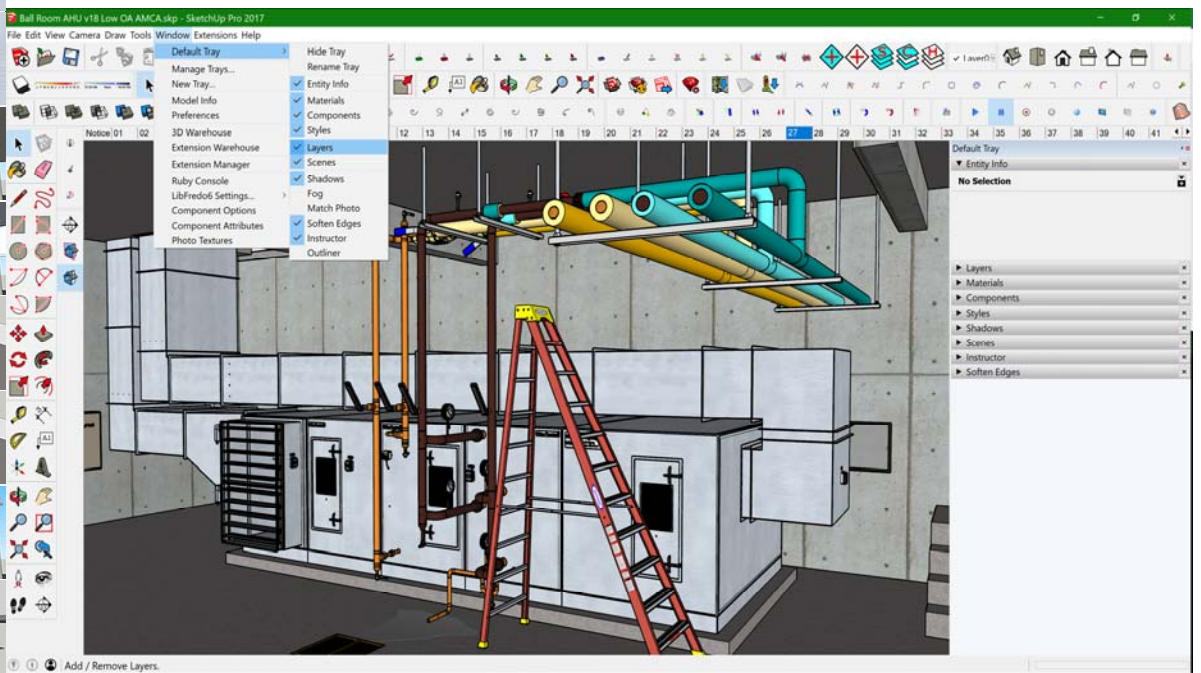
Besides using the commands like Zoom, Pan, Orbit, Position Camera, Walk, Look Around, and layer visibility to control what you are seeing, SketchUp allows you to save a view that you have navigated too as a "Scene". The Scene includes things like the position of the camera, the visibility of the various layers, the exposure of hidden geometry, etc.

To make it easier to work with the model, I have set up a number of scenes that will get you in the general vicinity of something that might be of interest in the model to save you time and effort relative to navigating to the view. The little "tabs" that you see across the top of the image in the screen shot above each contain a saved "Scene" in the model. The tab for the current scene is blue (tab 27 in the image above)



If you don't see the little tabs, you may need to turn them on. This can be done opening the "View" drop down menu and clicking next to "Scene Tabs" which will put a check mark there and cause the tabs to show up.











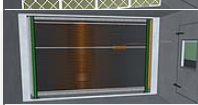

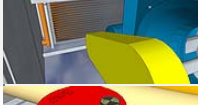



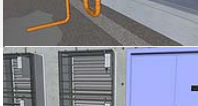

The number of tabs that will be visible will depend on the resolution of your monitor. My monitor is a very high resolution one so don't be surprised if you don't see as many tabs on your screen as are visible in the screen shots of my screen. The little black arrow keys at the upper right of the image window will allow you to scroll left or right and expose more tabs if some of them are hidden.



If you want to create your own scenes, turn layers on and off, etc., you can use the "Window" drop down menu to create "Tray's" that contain additional menus for controlling layers, creating scenes, etc. The trays can be docked or set to autohide depending on the features you select via the check marks.

For tutorials on scenes, layers and other SketchUp features, visit the [SketchUp YouTube channel](#).

Ballroom Air Handling Unit Model Scene Guide

Scene Number	Scene Description	
29	AHU Overview with the doors removed	
30	AHU Overview with the sides open and the ladder out of the way	
31	Mixing box from the OA connection end of the AHU	
32	Mixing box from the RA connection side of the AHU	
33	Mixed air and preheat sections	
34	Preheat and cooling section	
35	Fan and cooling coil, sides open	
36	Cooling coil connection end circuiting	
37	Discharge connection	
38	Motor and drive system	
39	Filter bank entering side	
40	Filters removed	
41	Fan motor nameplate	
42	Inside the fan compartment looking back at the chilled water coil	
43	View of chilled water valve from the top of the ladder	
44	Inside the ballroom	
45	Condensate drain piping	
46	Condensate drain piping, AHU sides open	
47	Relief dampers	