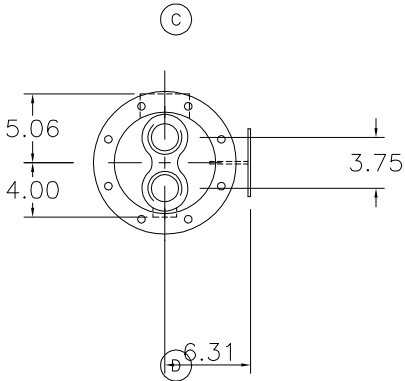
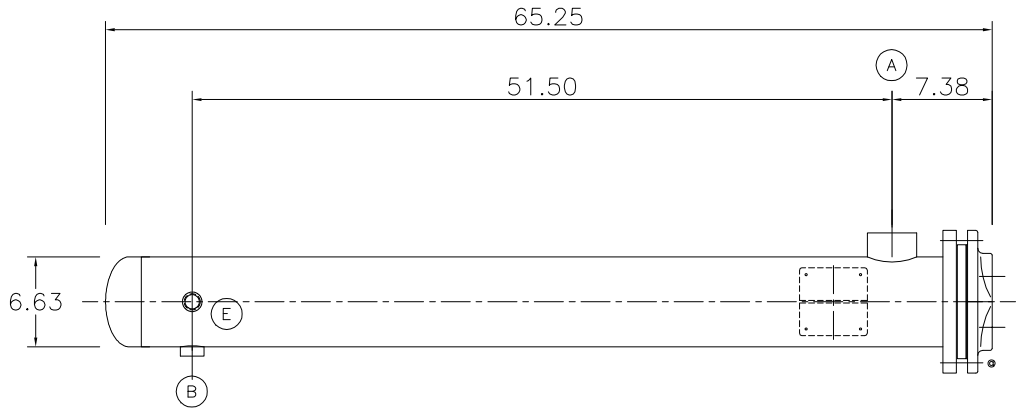


64.000 IN. REQ'D
TO REMOVE BUNDLE



- (E) .75 NPT CONN.
- (D) 2 PIPE TAP OUTLET
- (C) 2 PIPE TAP INLET
- (B) 1.00 PIPE TAP OUTLET
- (A) 2.50 PIPE TAP INLET

REPLACEMENT PARTS		MATERIAL SPECIFICATION	
DESCRIPTION/MATERIAL	PART NUMBER	FRONT HEAD: C. IRON	SHELL: STEEL
BUNDLE KIT W/GSKT & PKNG	4-245-06-060-001	REAR HEAD:	TUBE SUP: STEEL
GASKET COMP.FIBER	3-299-8-00-928-06	TUBESHEET: STEEL	
GASKET COMP.FIBER	3-298-8-00-926-06	TUBES: COPPER	0.750DIA.x20BWG
WEIGHT WET: 233 DRY: 166 BDL: 41 LBS.			
This document contains material and/or information which is the property of Xylem Inc., and supplied only on a confidential basis. No transmittal or disclosure shall be made to any person, firm, or corporation without prior written approval by Xylem Inc.		Bell & Gossett Buffalo, NY 14227 USA	
		TITLE SU65-2 EXCHANGER	
		INQUIRY NUMBER	
		5-260-06-060-001	
NOZZLE SCHEDULE		MADE REP	DATE 02-10-21
		CHECK REP	DATE 02-10-21
		SCALE: .073IN.=1.000IN.	
	D.P.	T.P.	MAX.TEMP
	MIN.TEMP		
SHELLSIDE	150 PSI	300 PSI	375 °F
TUBESIDE	150 PSI	300 PSI	375 °F
			-20 °F