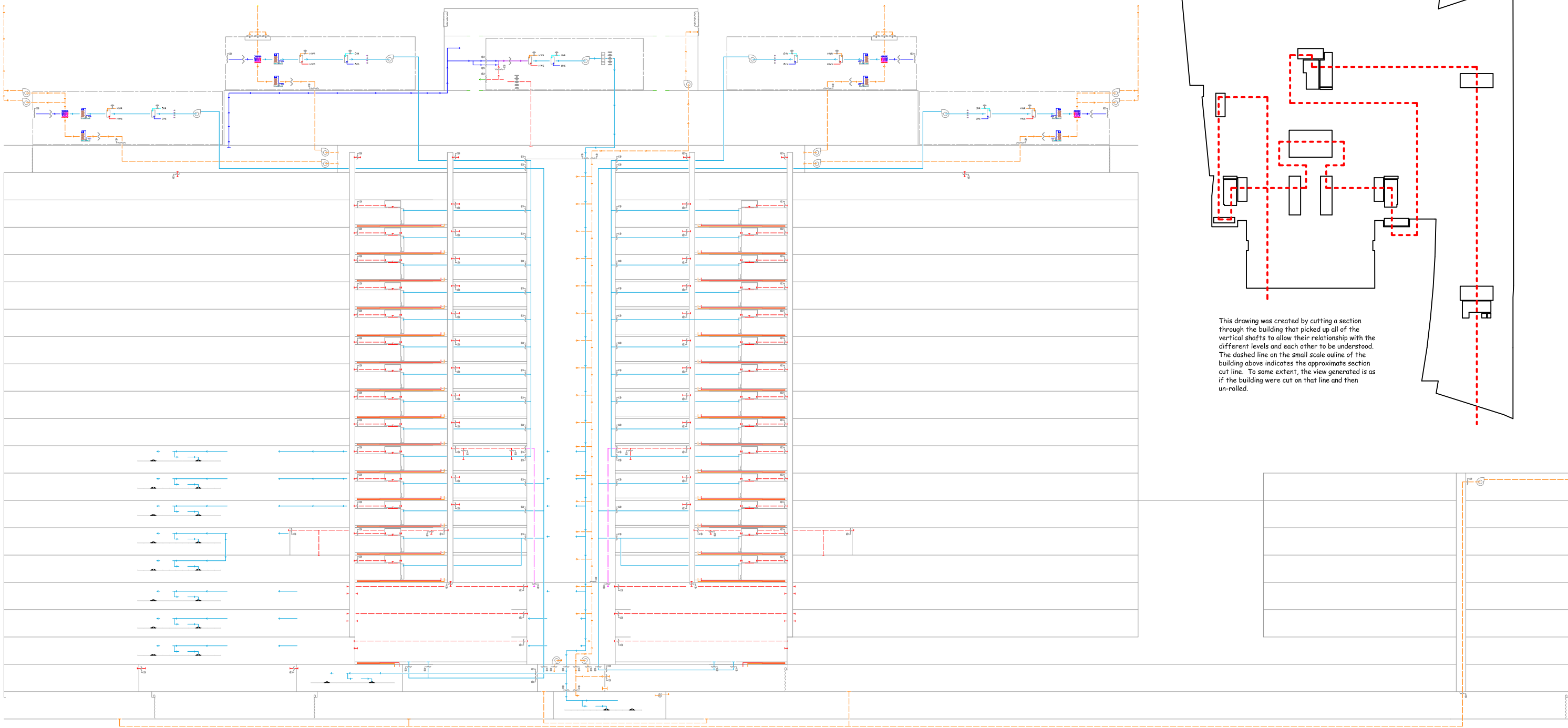


C:\Com1\Project Data\Seattle_FedCourt\HVAC Study\System Diagrams\Over-all Air Flow with AHU1-4 and AHU 8.dwg, 9/9/2014 5:50:31 AM



This drawing was created by cutting a section through the building that picked up all of the vertical shafts to allow their relationship with the different levels and each other to be understood. The dashed line on the small scale outline of the building above indicates the approximate section cut line. To some extent, the view generated is as if the building were cut on that line and then un-rolled.

New Seattle Court House Over-all Air Flow Diagram, AHU1, 2, 3, and 4 and Typical VAV System Diagram

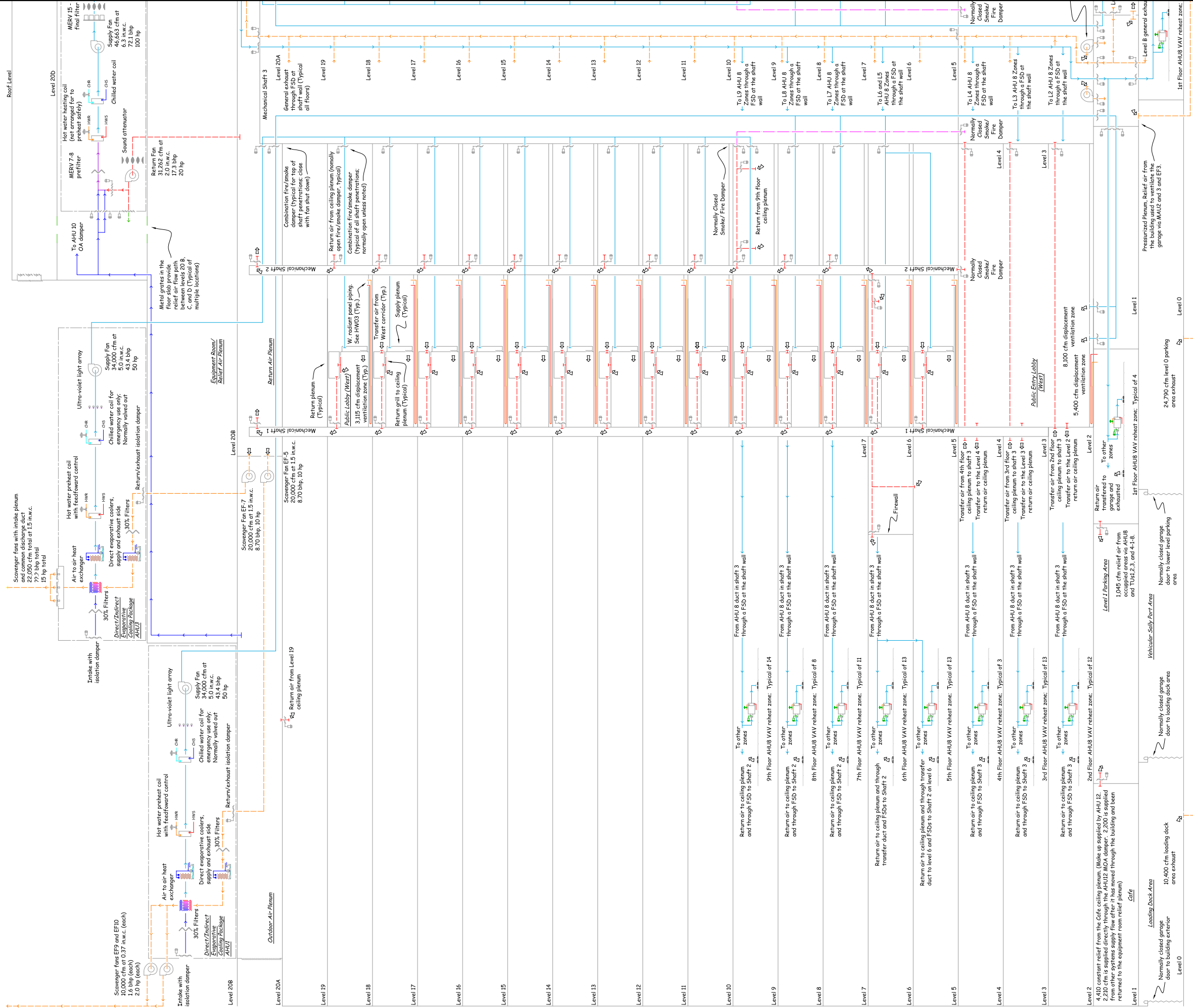
Revisions: 1 -
Revisions: 2 -
Revisions: 3 -

Drawn by:DAS

Date: 06-20-10

Checked by: DAS

Overview



NOTES:
1. All smoke dampers are Normally Open unless otherwise noted.

New Seattle Court House AHU1, 2, 3, 4, and 8 System Diagram

Revisions: 1 -
Revisions: 2 -
Revisions: 3 -

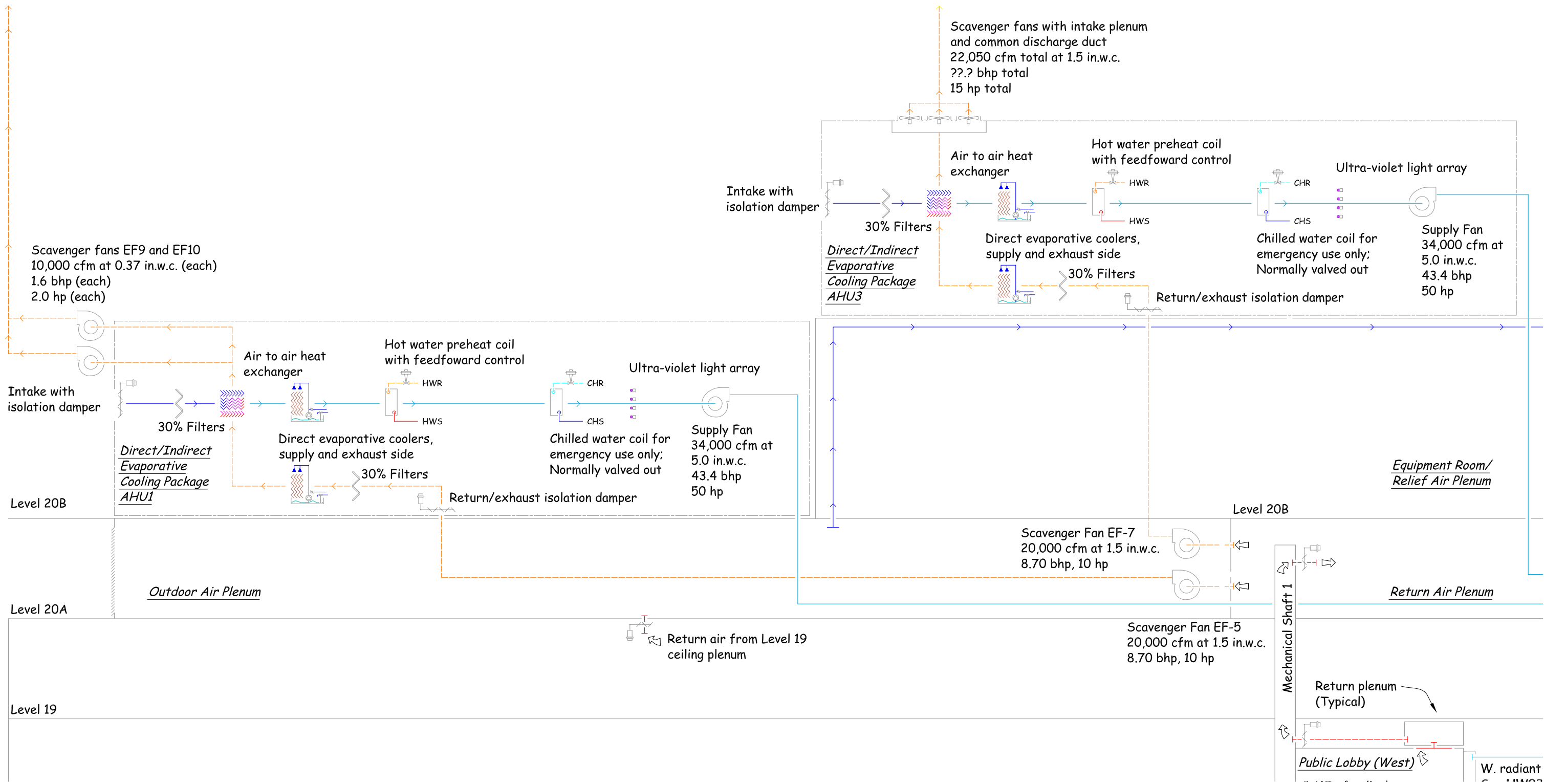
Drawn by: DAS

Date: 06-20-10

Checked by: DAS

AHU1 and 3

C:\Com1\Project Data\Seattle\HVAC Study\System Diagrams\Over-all Air Flow\Over-all Air Flow with AHU1-4 and AHU 8.dwg, 9/9/2014 5:52:34 AM



New Seattle Court House AHU1, 2, 3, 4, and 8 System Diagram

Revisions: 1 -
Revisions: 2 -
Revisions: 3 -

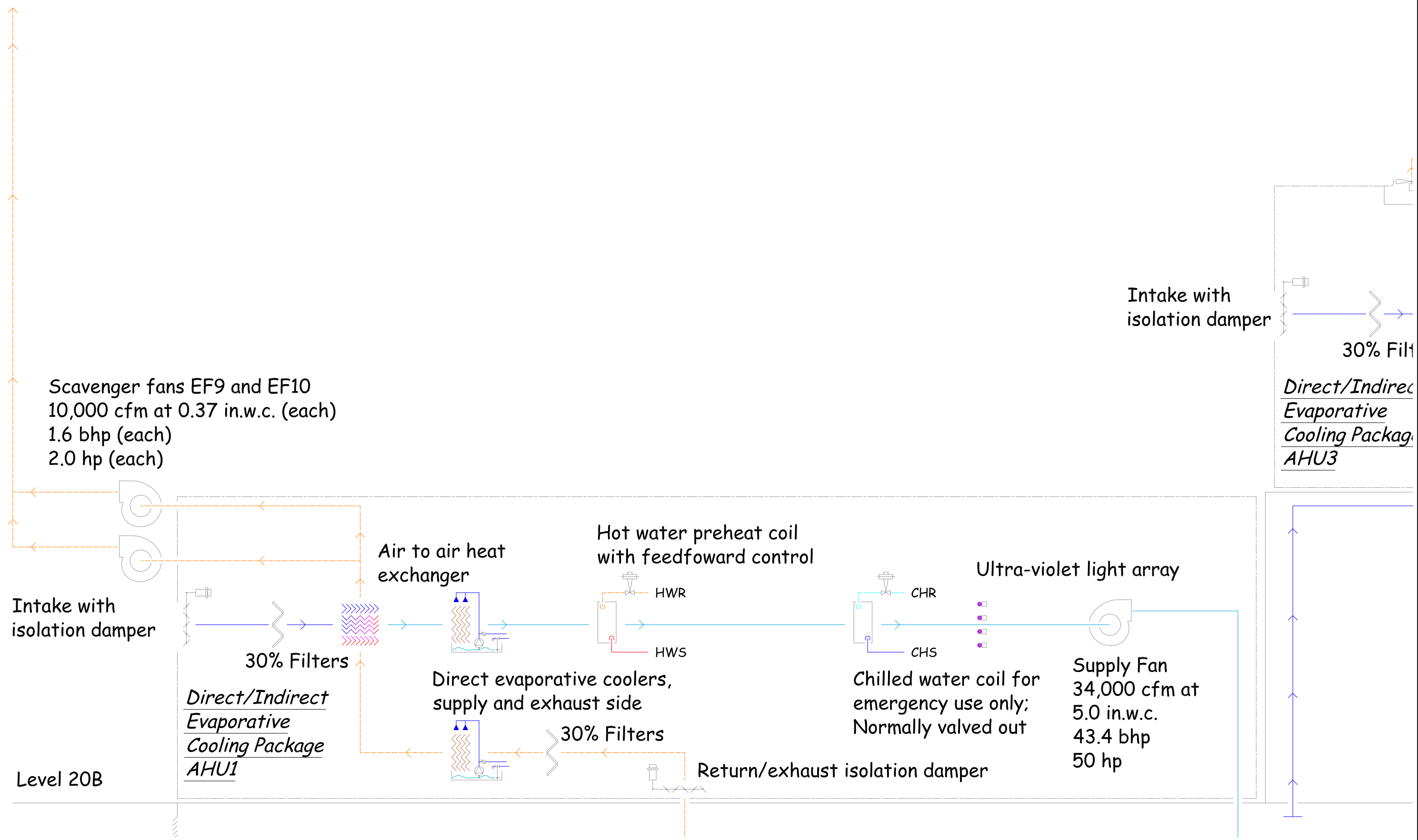
Drawn by: DAS

Date: 06-20-10

Checked by: DAS

AHU1 and 3

C:\ComTT\Project Data\Seattle_FedCourt\HVAC Study\System Diagrams\Over-all Air Flow\Over-all Air Flow with AHU 1-4 and AHU 8.dwg, 9/9/2014 6:01:38 AM



New Seattle Court House AHU1, 2, 3, 4, and 8 System Diagram

Revisions: 1 -
Revisions: 2 -
Revisions: 3 -

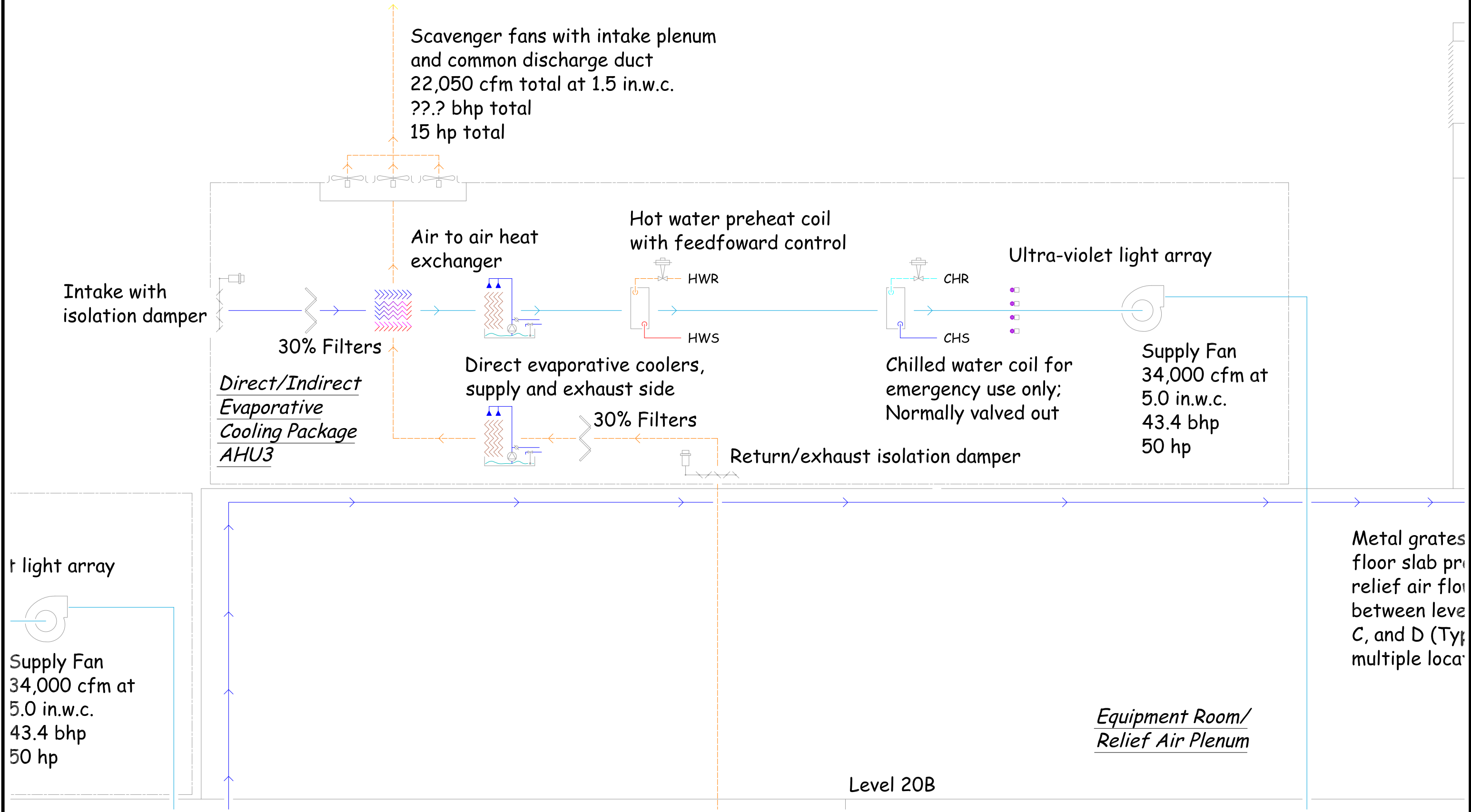
Drawn by: DAS

Date: 06-20-10

Checked by: DAS

AHU1

C:\Com1\Project Data\Seattle_FedCourt\HVAC Study\System Diagrams\Over-all Air Flow with AHU1-4 and AHU 8.dwg, 9/9/2014 6:02:59 AM

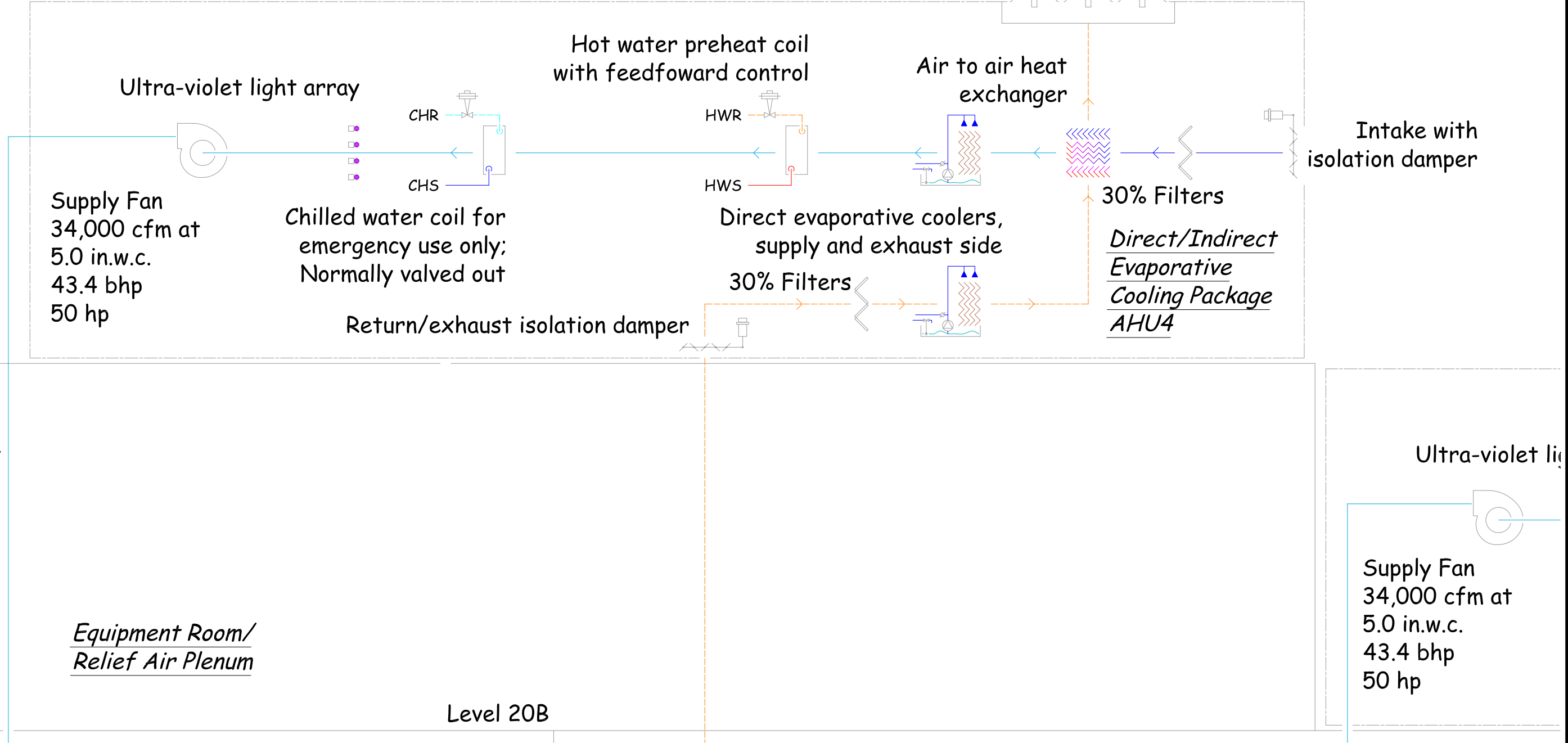


New Seattle Court House AHU1, 2, 3, 4, and 8 System Diagram

| | | | |
|--|-----------------|----------------|------|
| Revisions: 1 - Revisions: 2 - Revisions: 3 - | Drawn by: DAS | Date: 06-20-10 | AHU3 |
| | Checked by: DAS | | |

Barometric dampers and louver
to building exterior; Typical
of the perimeter of the upper
portion of level 20D

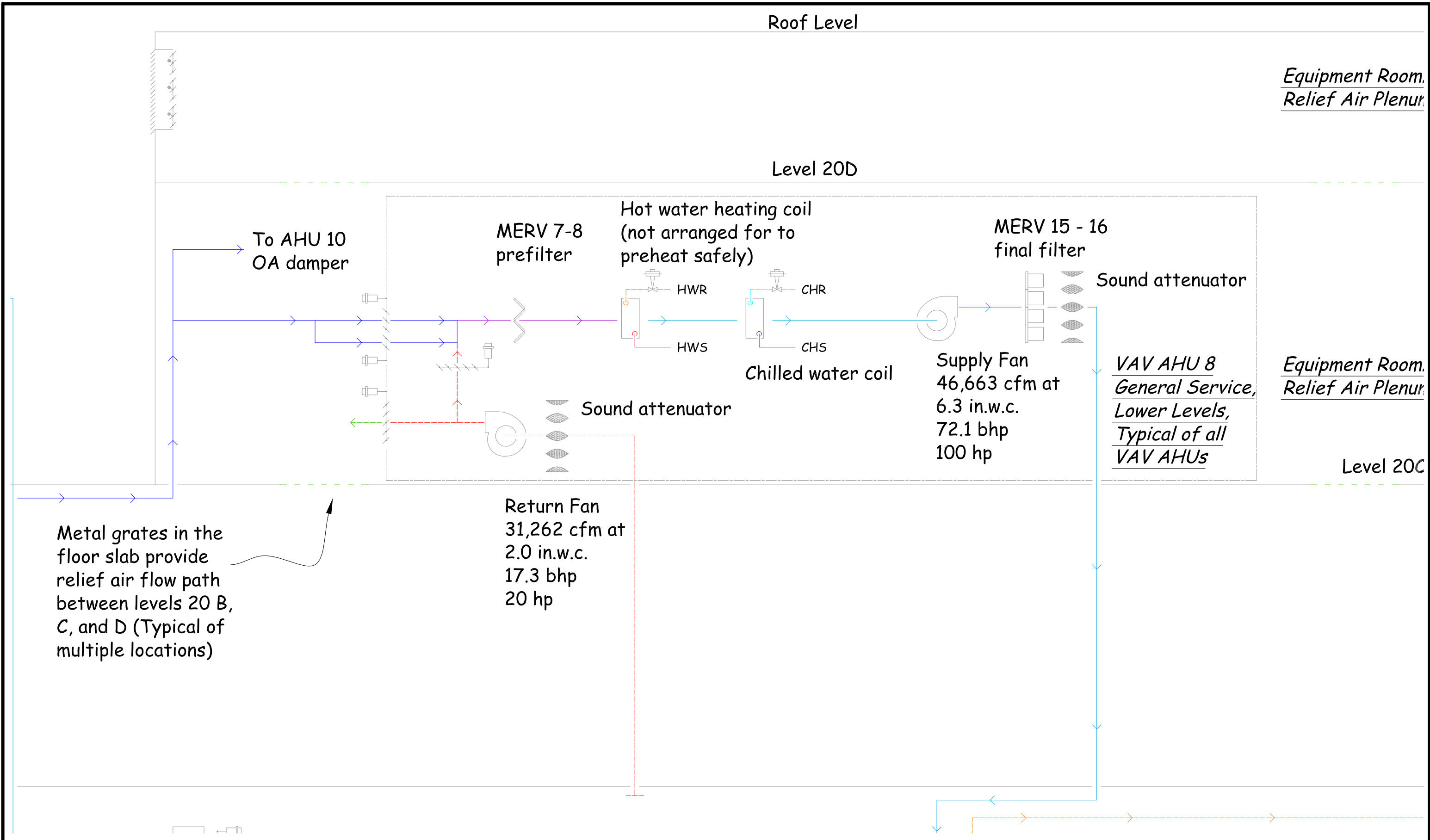
Scavenger fans with intake plenum
and common discharge duct
22,050 cfm total at 1.5 in.w.c.
??? bhp total
15 hp total



New Seattle Court House AHU1, 2, 3, 4,and 8 System Diagram

| | | | |
|----------------|-----------------|----------------|------|
| Revisions: 1 - | Drawn by: DAS | Date: 06-20-10 | AHU4 |
| Revisions: 2 - | Checked by: DAS | | |
| Revisions: 3 - | | | |

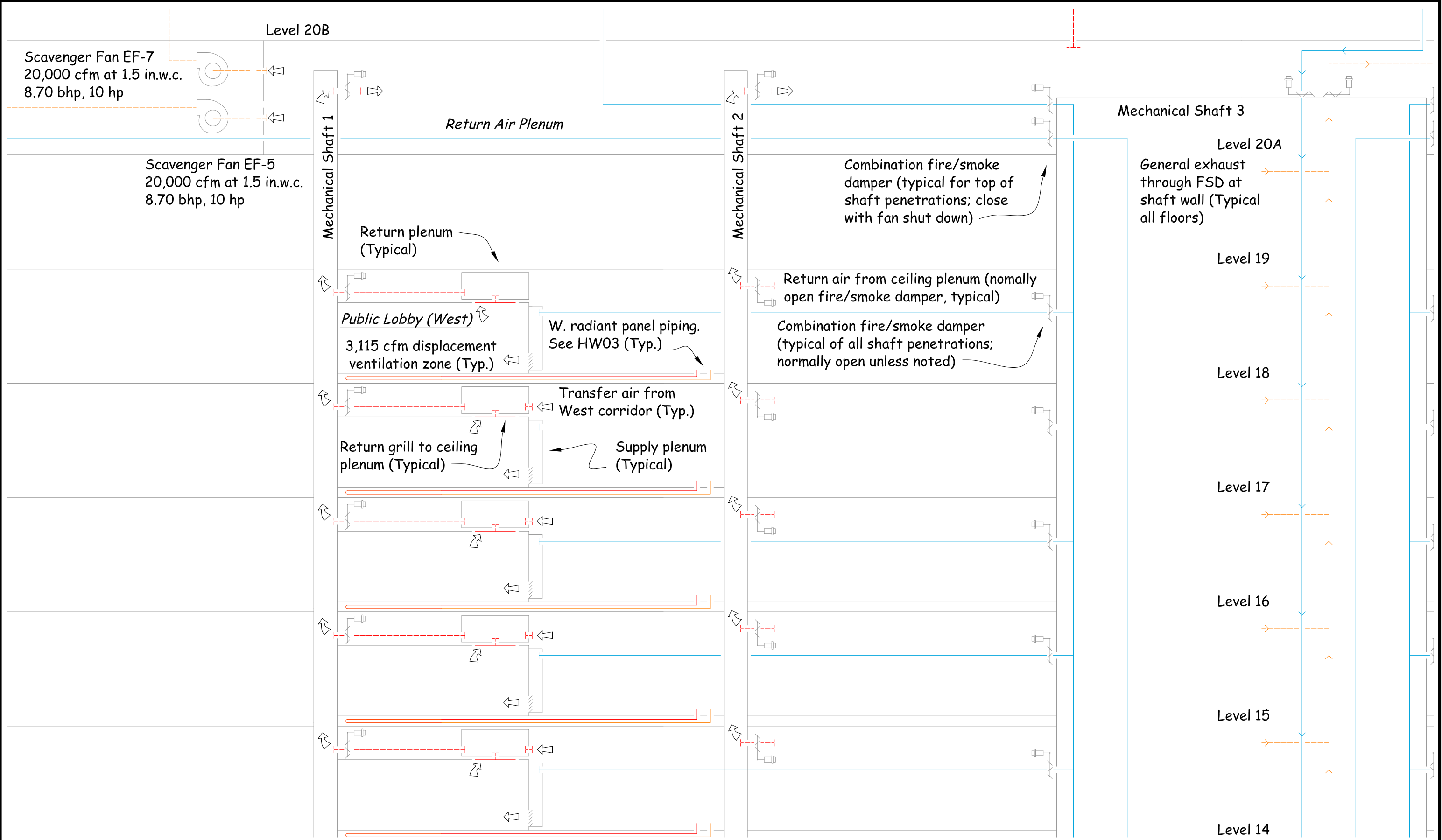
C:\Com1\Project Data\Seattle_FedCourt\HVAC Study\System Diagrams\Over-all Air Flow\Over-all Air Flow with AHU 1-4 and AHU 8.dwg, 9/9/2014 6:04:25 AM



New Seattle Court House AHU1, 2, 3, 4, and 8 System Diagram

| | | | |
|--|-----------------|----------------|------|
| Revisions: 1 - Revisions: 2 - Revisions: 3 - | Drawn by: DAS | Date: 06-20-10 | AHU4 |
| | Checked by: DAS | | |

C:\Com1\Project Data\Seattle_FedCourt\HVAC Study\System Diagrams\Over-all Air Flow\Over-all Air Flow with AHU1-4 and AHU 8.dwg, 9/9/2014 6:05:13 AM



New Seattle Court House AHU1, 2, 3, 4, and 8 System Diagram

Revisions: 1 -
Revisions: 2 -
Revisions: 3 -

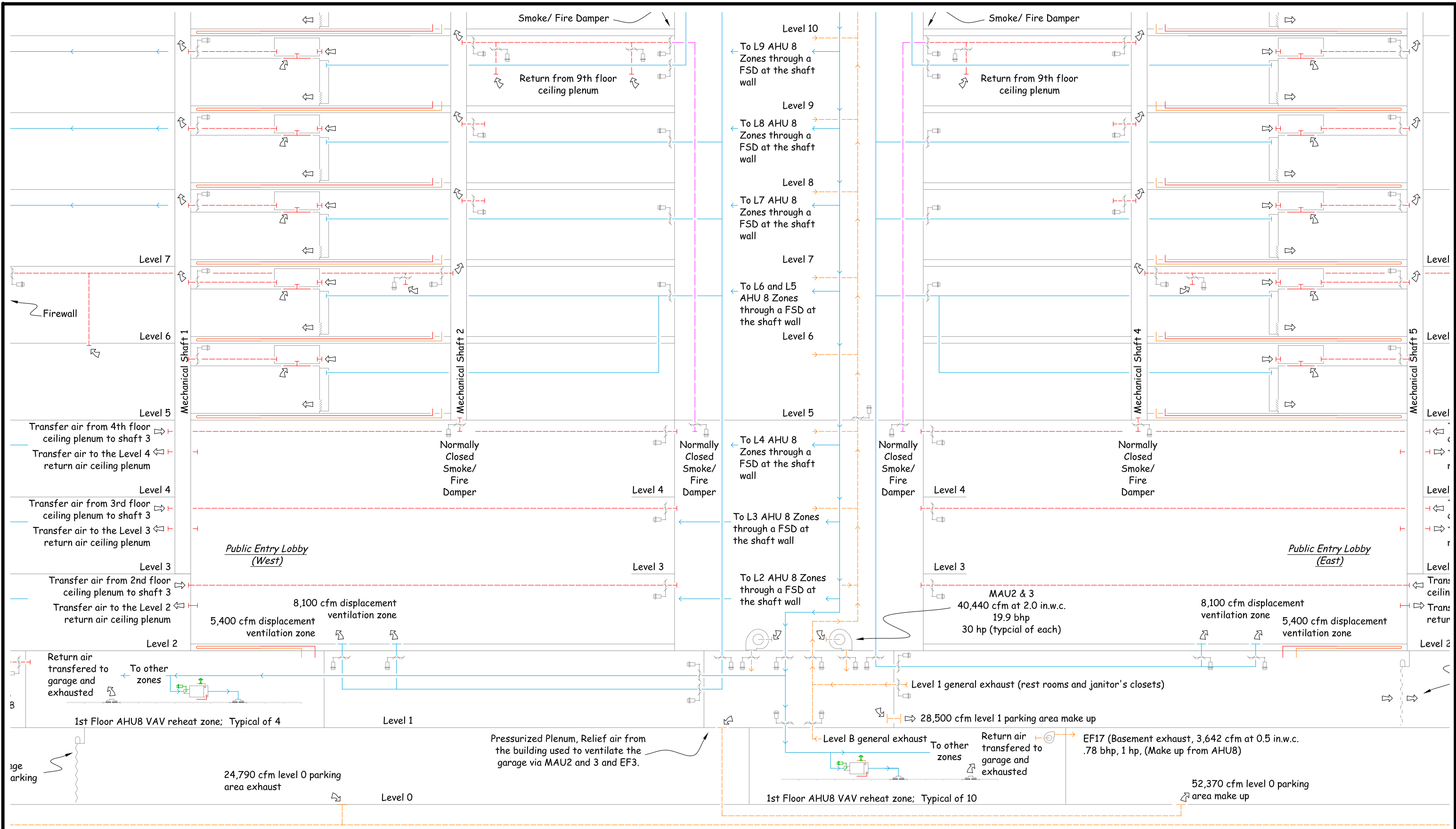
Drawn by: DAS

Date: 06-20-10

Checked by: DAS

Public Lobby

C:\Com1\Project Data\Seattle_FedCourt\HVAC Study\System Diagrams\Over-all Air Flow with AHU1-4 and AHU 8.dwg, 9/9/2014 6:05:43 AM



New Seattle Court House AHU1, 2, 3, 4, and 8 System Diagram

Revisions: 1 -
Revisions: 2 -
Revisions: 3 -

Drawn by: DAS

Date: 06-20-10

Checked by: DAS

Entry, L0, L1